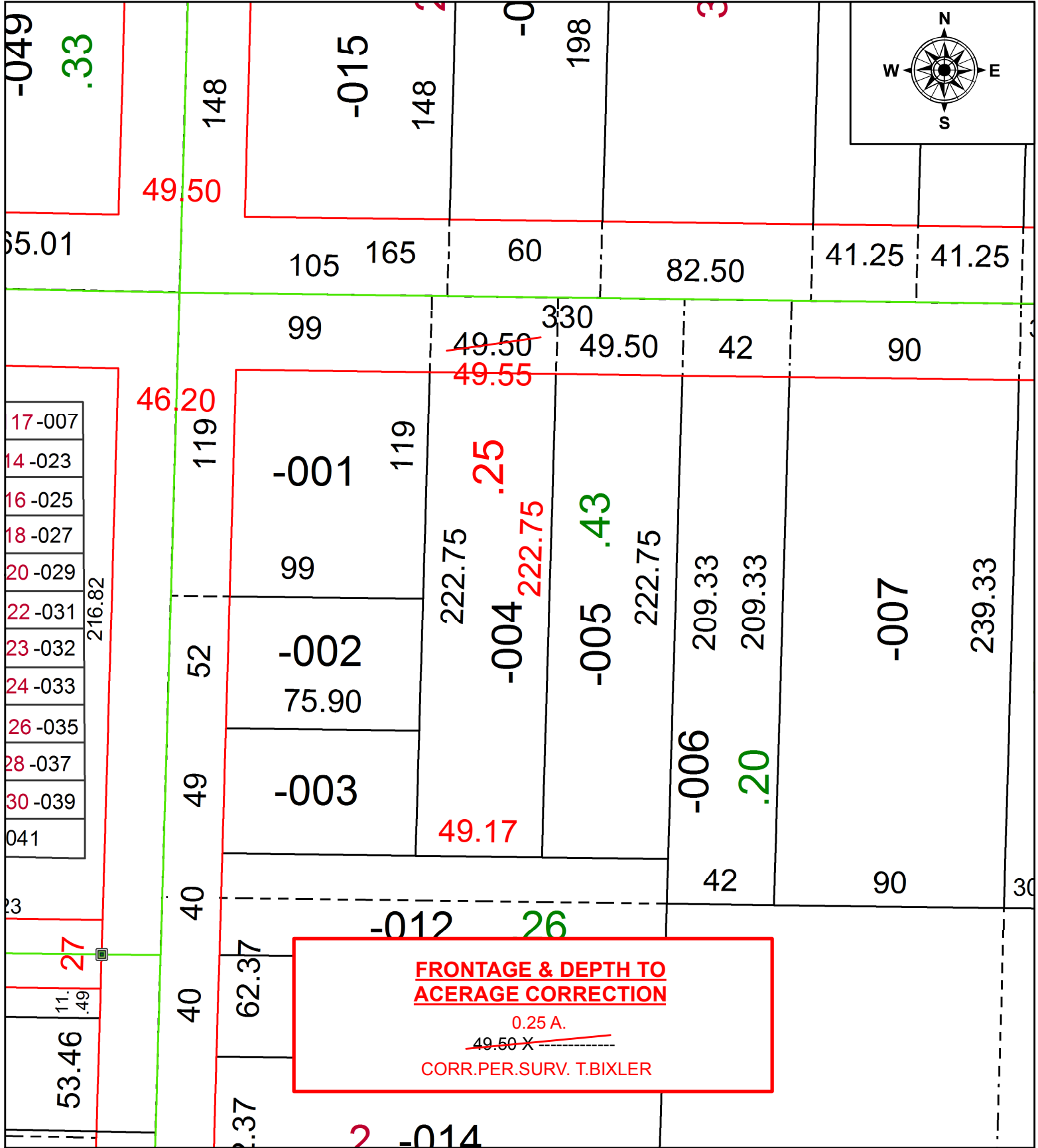


PARENT PARCEL: 09-00-086-106-004

CHILD PARCEL:

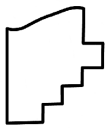
STARTING POINT: NORTHEAST CORNER OF S/L 33 IN ORIGINAL VILLAGE PLAT OF OBERLIN

20-04402-C



**FRONTAGE & DEPTH TO
ACERAGE CORRECTION**

0.25 A.
~~49.50 X~~
 CORR.PER.SURV. T.BIXLER



SPLITS/DEEDS PROCESSED
 LORAIN COUNTY TAX MAP DEPARTMENT
 226 MIDDLE AVE. ELYRIA, OH

SURVEYED BY: TREVOR A. BIXLER
 CLOSURE: 1:103,455
 MAP PAGE(S): 9-00-086
 APPROVED BY: RRM DATE: 9-17-20
 SCALE: 1" = 50 PRIOR INSTRUMENT: 20140503318