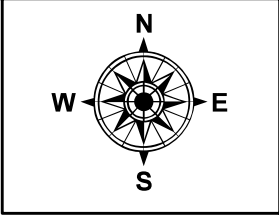


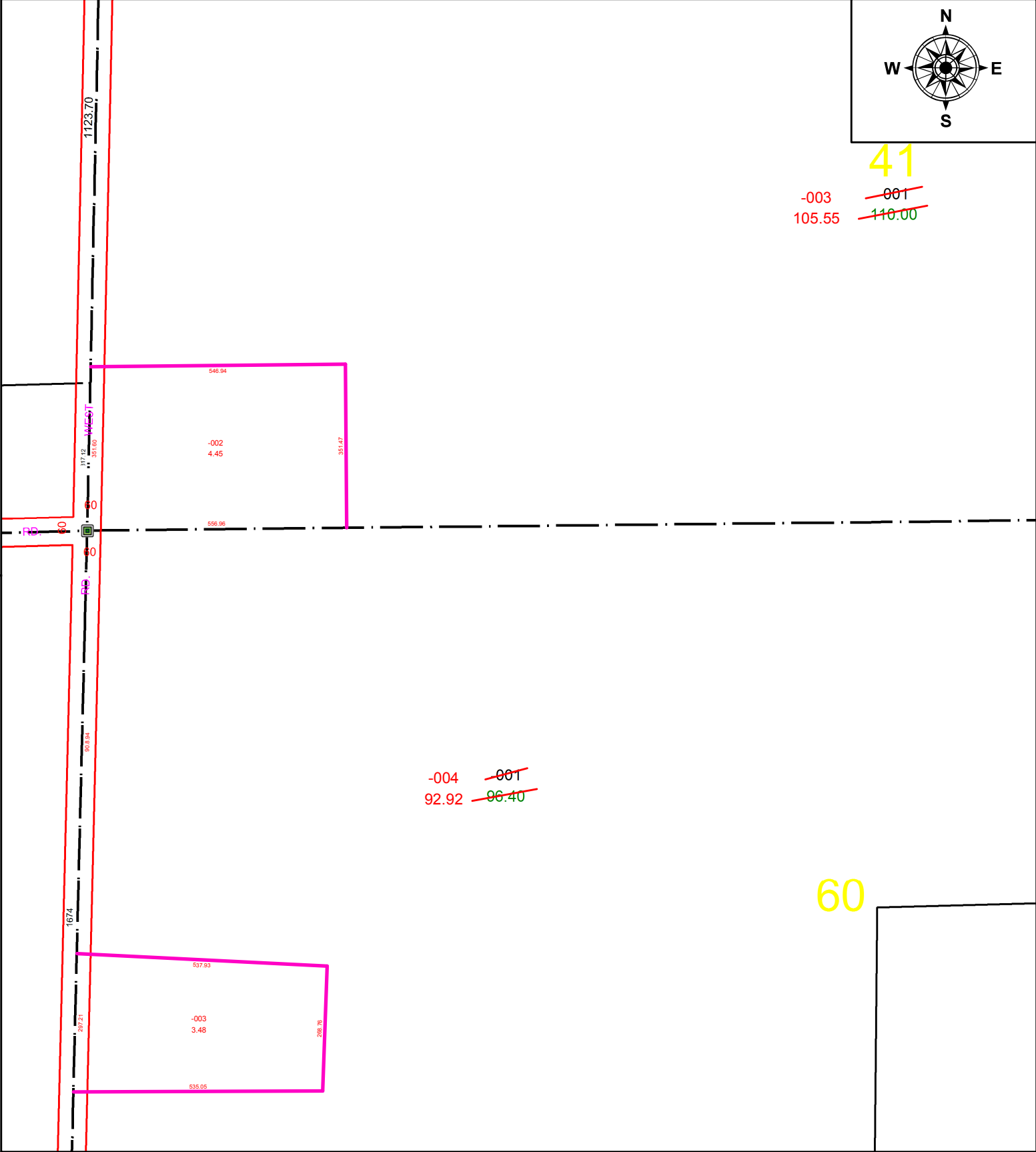
PARENT PARCEL: 14-00-041-000-001 & 14-00-060-000-001
CHILD PARCEL: 14-00-041-000-002, -003 & 14-00-060-000-003, -004
STARTING POINT: CL OF WEST RD & S.W. CORNER OF O.L. 41

21-04401



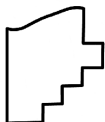
41

-003 ~~001~~
105.55 ~~110.00~~



-004 ~~001~~
92.92 ~~96.40~~

60



SPLITS/DEEDS PROCESSED
LORAIN COUNTY TAX MAP DEPARTMENT
226 MIDDLE AVE. ELYRIA, OH

SURVEYED BY: TIMOTHY HOZALSKI
CLOSURE: 1: 244,004
MAP PAGE(S): 14-00-041
APPROVED BY: DMA DATE: 11/5/2021
SCALE: 1" = 275' PRIOR INSTRUMENT: 19850179985 & 20050054139