

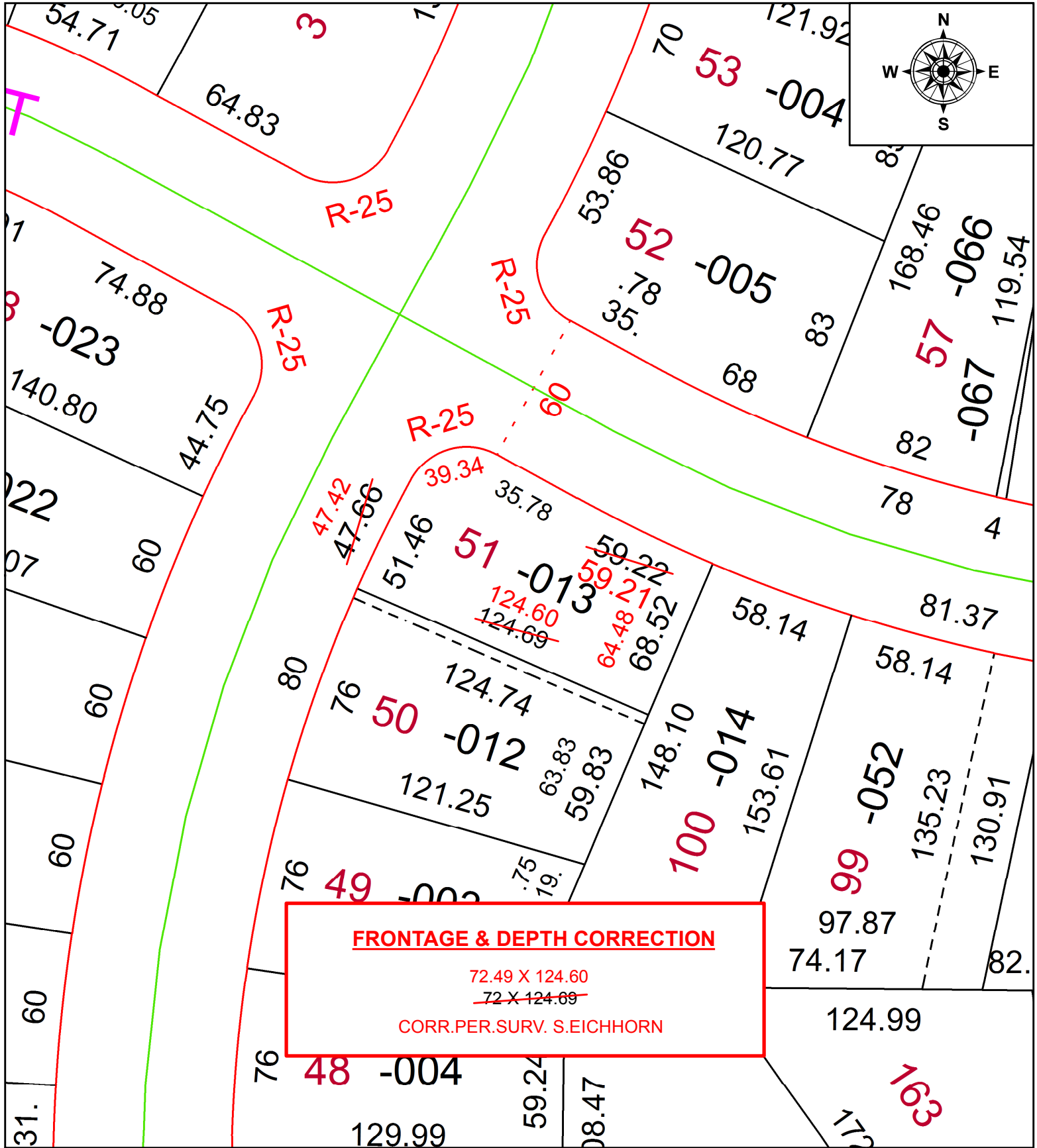
PARENT PARCEL: 06-25-026-107-013

CHILD PARCEL:

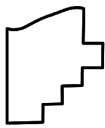
STARTING POINT:

NORTHEAST CORNER OF S/L 51 IN SHERWOOD FOREST 1

20-04398-D



**FRONTAGE & DEPTH CORRECTION**  
 72.49 X 124.60  
~~72 X 124.69~~  
 CORR.PER.SURV. S.EICHHORN



**SPLITS/DEEDS PROCESSED**  
 LORAIN COUNTY TAX MAP DEPARTMENT  
 226 MIDDLE AVE. ELYRIA, OH

SURVEYED BY: SUSAN L. EICHHORN  
 CLOSURE: 1:86,351  
 MAP PAGE(S): 6-25-026  
 APPROVED BY: RRM DATE: 9-15-20  
 SCALE: 1" = 50 PRIOR INSTRUMENT: 20180680557