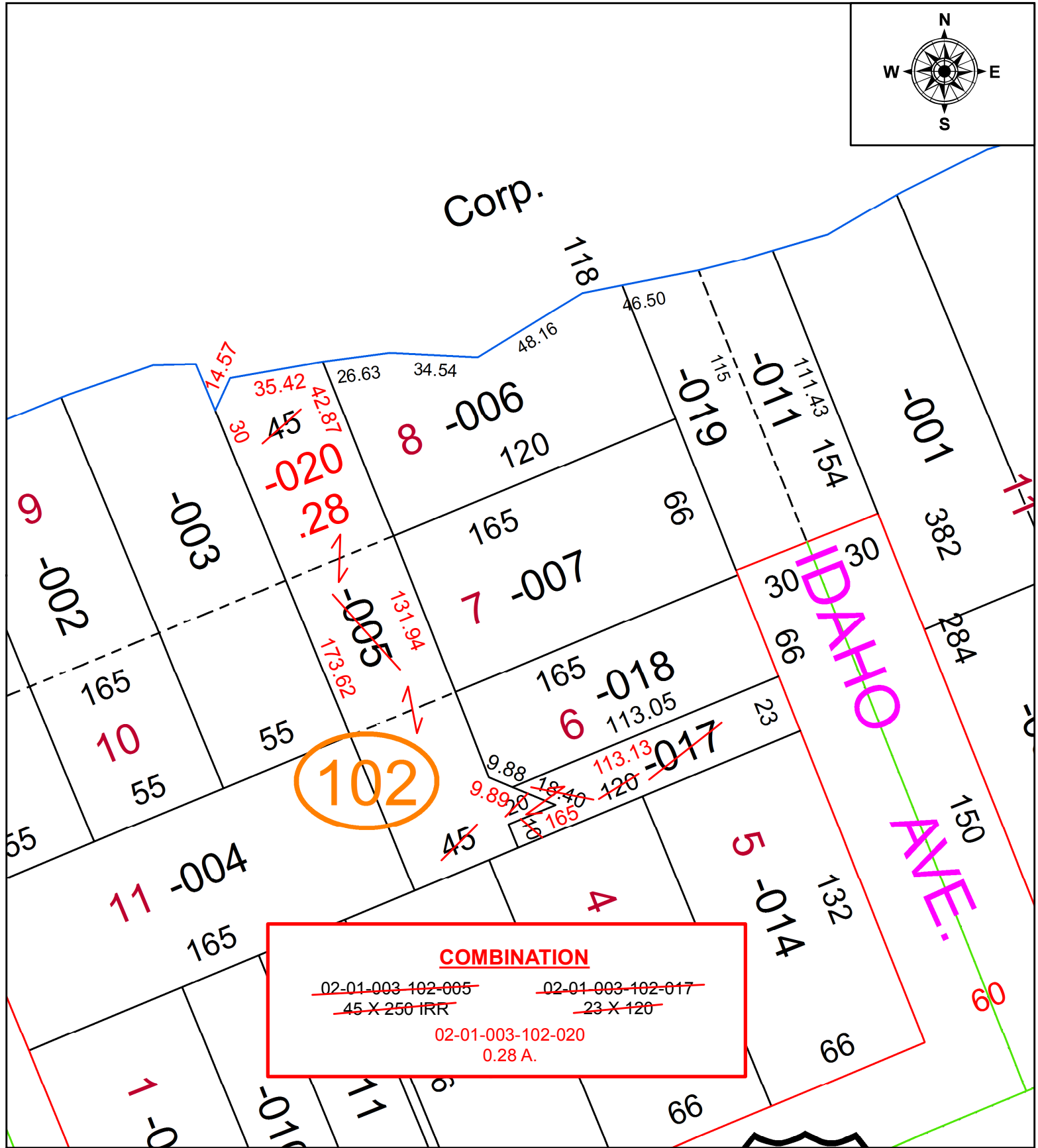
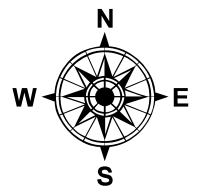


PARENT PARCEL: 02-01-003-102-005, -017
 CHILD PARCEL: 02-01-003-102-020
 STARTING POINT: INTERSECTION OF NORTH LINE OF E. ERIE AVE. AND WEST LINE OF IDAHO AVE.

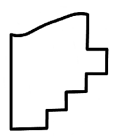
20-04397-D



COMBINATION

~~02-01-003-102-005~~ ~~02-01-003-102-017~~
~~45 X 250 IRR~~ ~~23 X 120~~

02-01-003-102-020
 0.28 A.



SPLITS/DEEDS PROCESSED
 LORAIN COUNTY TAX MAP DEPARTMENT
 226 MIDDLE AVE. ELYRIA, OH

SURVEYED BY: PATRICK A. MCGANNON
 CLOSURE: 1:17,228
 MAP PAGE(S): 2-01-003
 APPROVED BY: RRM DATE: 9-15-20
 SCALE: 1" = 50' PRIOR INSTRUMENT: 20170648186