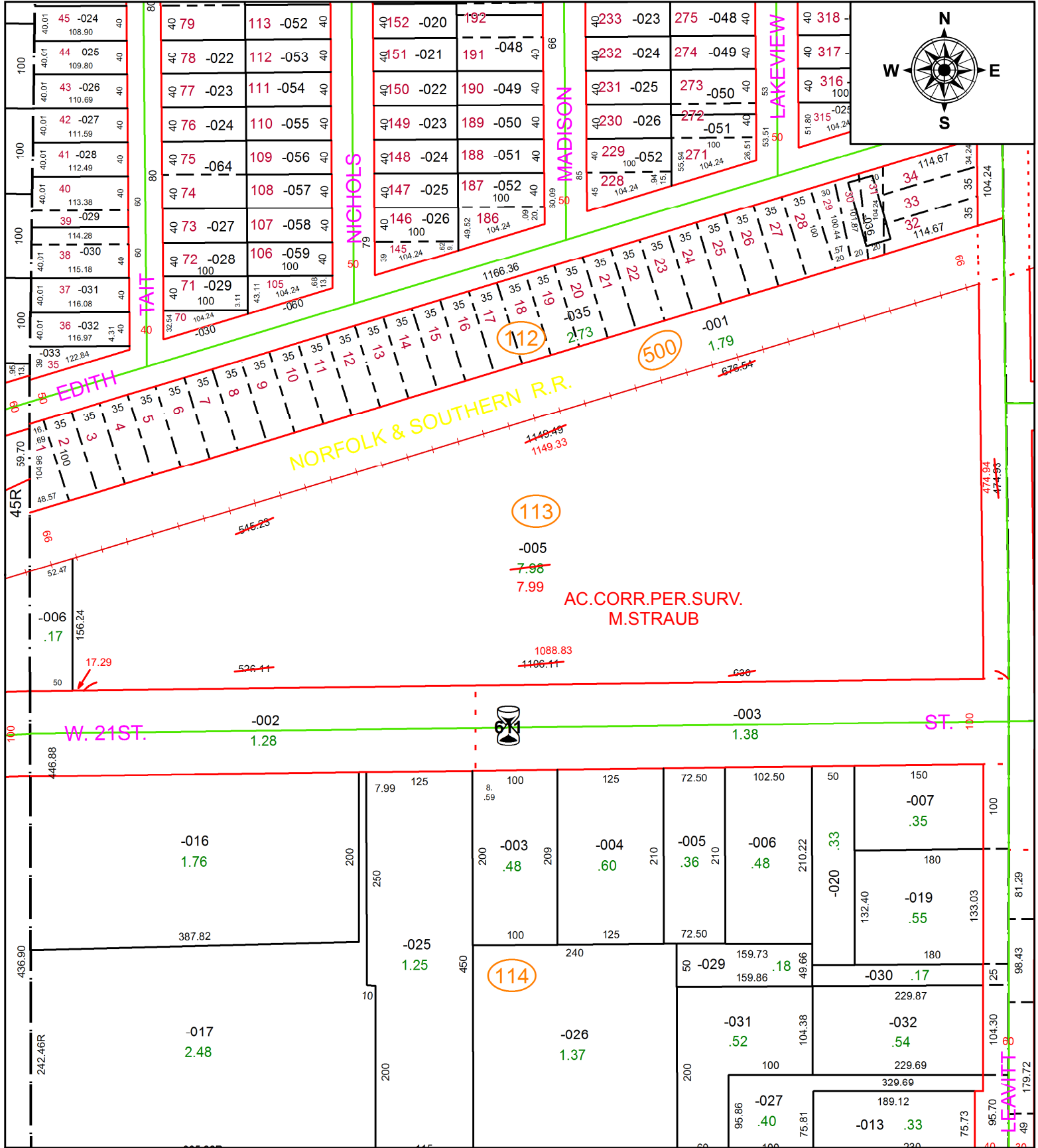


PARENT PARCEL: 02-02-023-113-005

CHILD PARCEL:

STARTING POINT: INTERSECTION OF C/L OF S.R. 58 AND C/L OF W. 21ST ST.

20-04396-D



SPLITS/DEEDS PROCESSED
 LORAIN COUNTY TAX MAP DEPARTMENT
 226 MIDDLE AVE. ELYRIA, OH

SURVEYED BY: MICHAEL A. STRAUB
CLOSURE: 1:556,081
MAP PAGE(S): 2-02-023
APPROVED BY: RRM **DATE:** 9-11-20
SCALE: 1" = 150 **PRIOR INSTRUMENT:** 20170619158