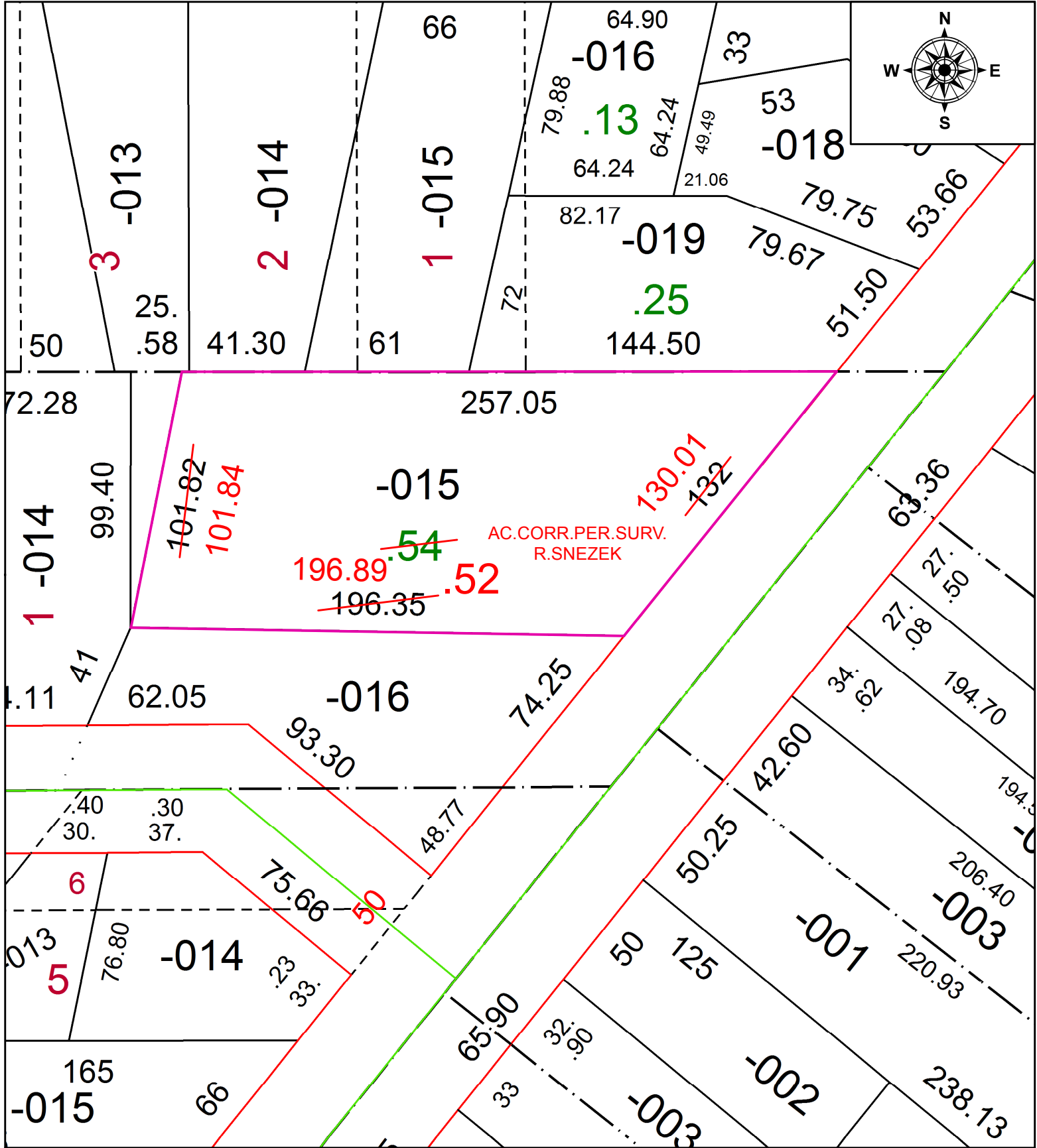


PARENT PARCEL: 06-24-057-000-015

CHILD PARCEL:

STARTING POINT: NORTHEAST CORNER OF S/L 1 IN WM. A. ELY'S AND MARY PEMBER'S ADDITION

20-04394-D



SPLITS/DEEDS PROCESSED
 LORAIN COUNTY TAX MAP DEPARTMENT
 226 MIDDLE AVE. ELYRIA, OH

SURVEYED BY: RYANA A. SNEZEK
 CLOSURE: 1:970,918
 MAP PAGE(S): 6-24-057
 APPROVED BY: RRM DATE: 9-11-20
 SCALE: 1" = 50 PRIOR INSTRUMENT: 20170627878