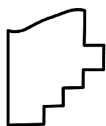
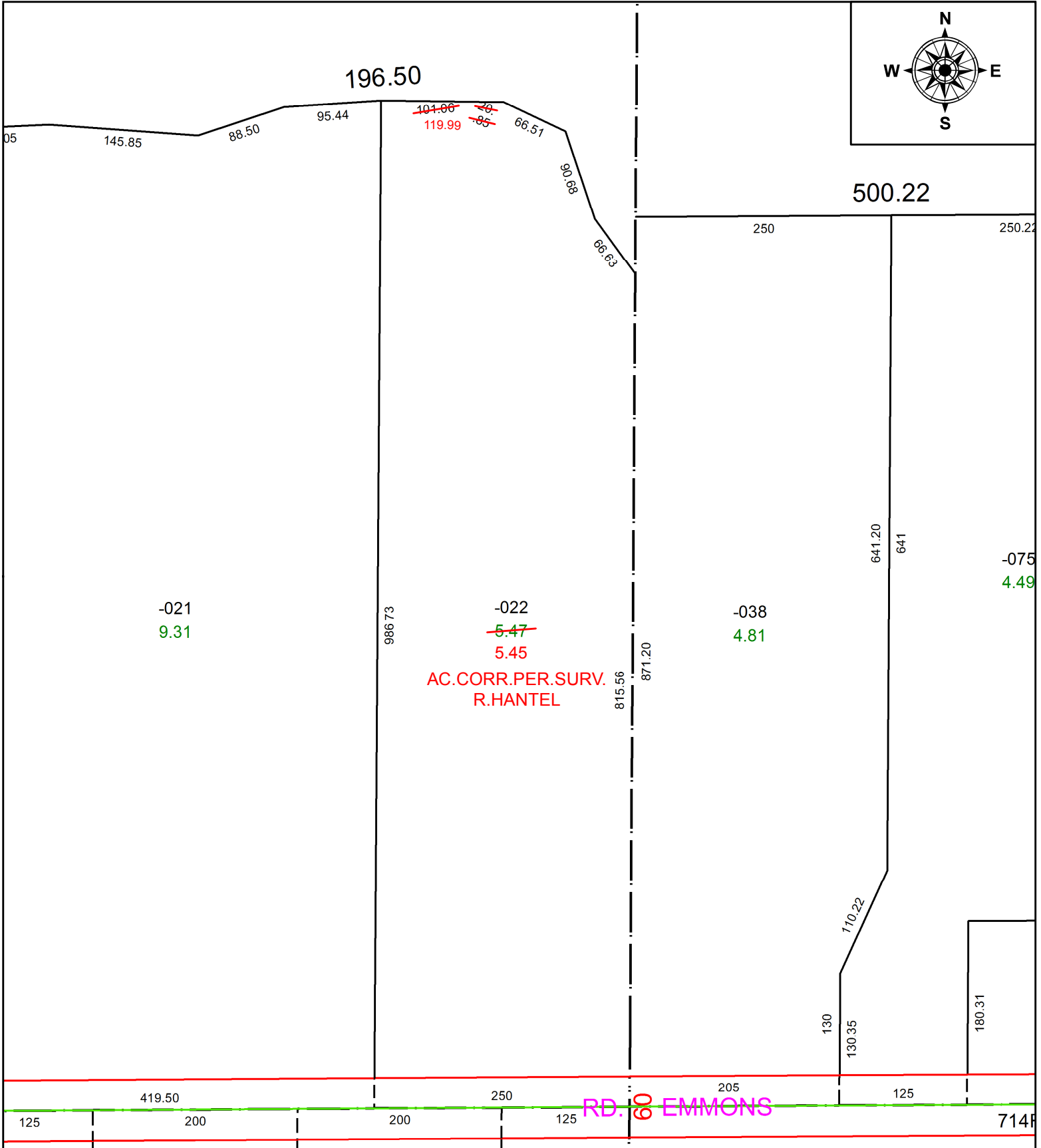


PARENT PARCEL: 12-00-013-000-022

CHILD PARCEL:

STARTING POINT: INTERSECTION OF C/L OF EMMONS RD. AND EAST LINE OF O.L.13

20-04392-A



SPLITS/DEEDS PROCESSED
 LORAIN COUNTY TAX MAP DEPARTMENT
 226 MIDDLE AVE. ELYRIA, OH

SURVEYED BY: RICHARD F. HANTEL
CLOSURE: 1:59,362
MAP PAGE(S): 12-00-013
APPROVED BY: RRM **DATE:** 9-4-20
SCALE: 1" = 125 **PRIOR INSTRUMENT:** 20060175953