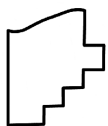
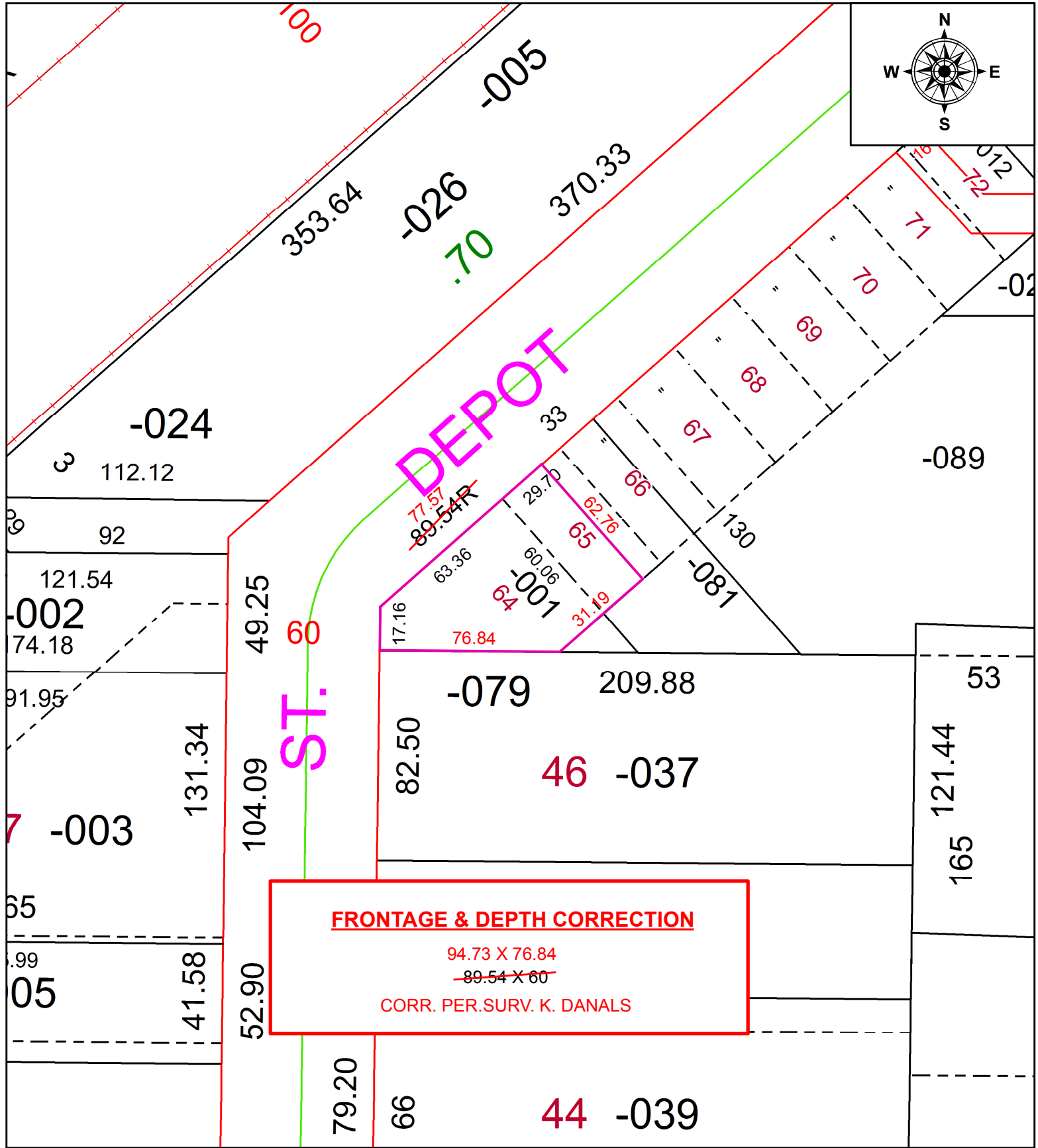


PARENT PARCEL: 18-00-027-106-001

CHILD PARCEL:

STARTING POINT: INTERSECTION OF C/L OF DEPOT ST. ANF C/L OF S.R.18

20-04391-D



SPLITS/DEEDS PROCESSED
 LORAIN COUNTY TAX MAP DEPARTMENT
 226 MIDDLE AVE. ELYRIA, OH

SURVEYED BY: KYLE R. DANALS

CLOSURE: 1:48,446

MAP PAGE(S): 18-00-027

APPROVED BY: RRM DATE: 9-2-20

SCALE: 1" = 50' PRIOR INSTRUMENT: OR 1187/554