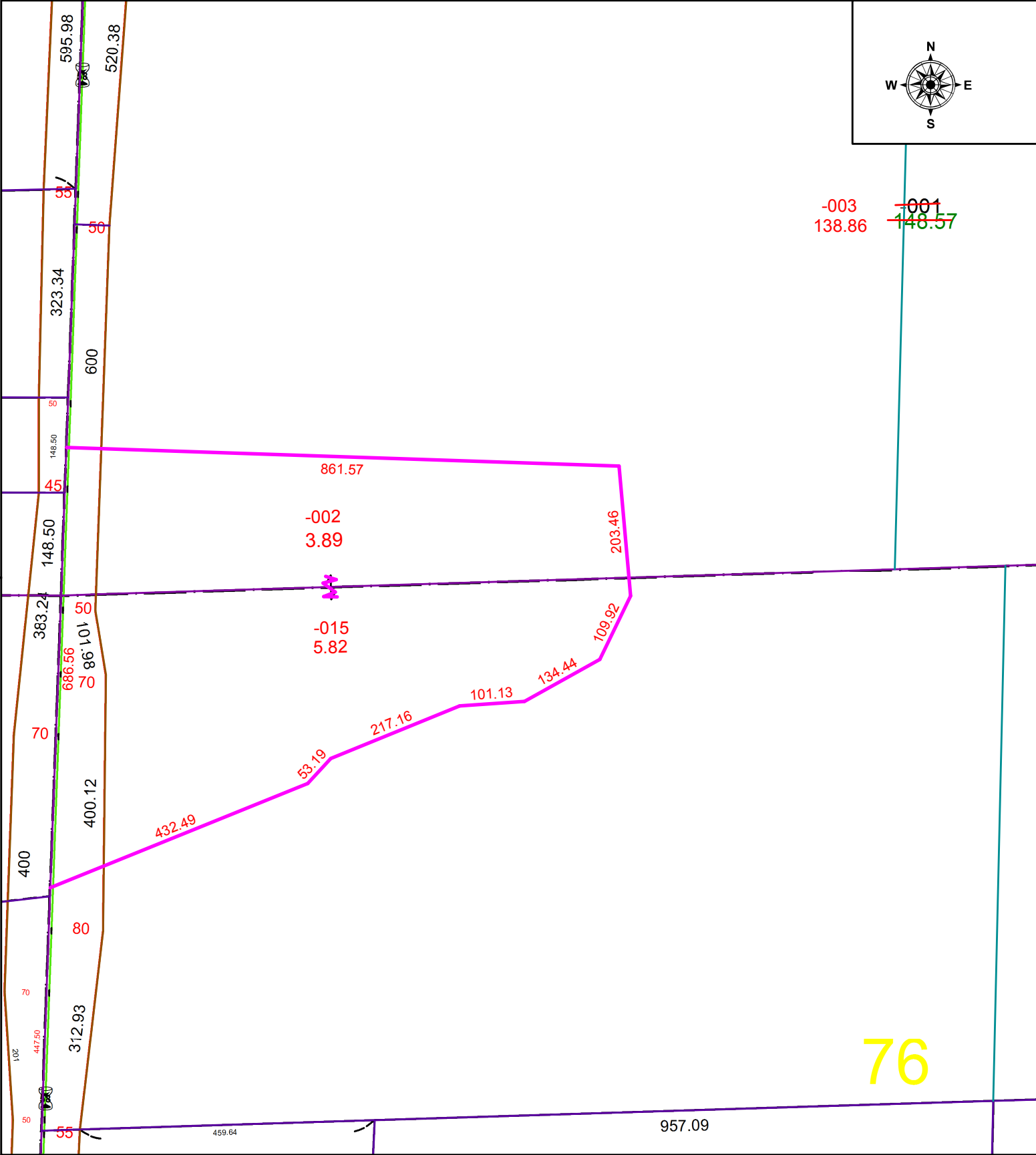
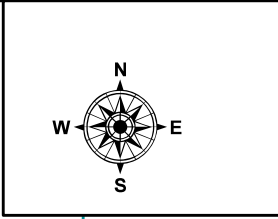


PARENT PARCEL: 14-00-065-000-001

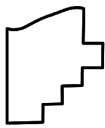
CHILD PARCEL: 14-00-065-000-002, -003 & 14-00-076-000-015

STARTING POINT: C/L SR 303 & SOUTHWEST CORNER OF O.L. 76

21-04386



76



**SPLITS/DEEDS PROCESSED**  
LORAIN COUNTY TAX MAP DEPARTMENT  
226 MIDDLE AVE. ELYRIA, OH

SURVEYED BY: TIMOTHY D. HOZALSKI  
CLOSURE: 1: 380,134  
MAP PAGE(S): 14-00-065  
APPROVED BY: WRZ DATE: 10/6/2021  
SCALE: 1" = 200 PRIOR INSTRUMENT: 2020-0787193