

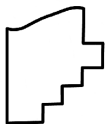
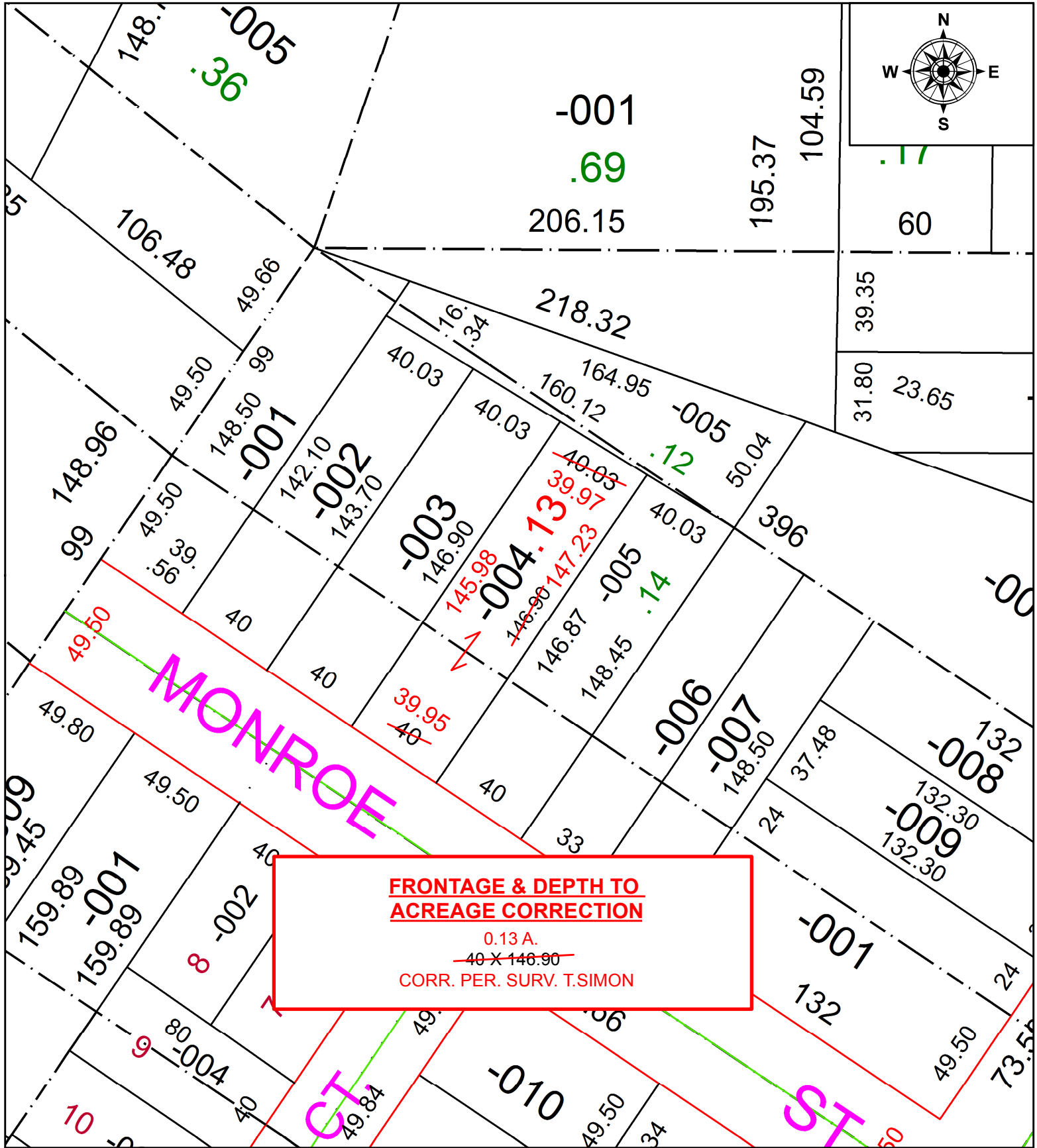
PARENT PARCEL: 06-24-148-000-004

CHILD PARCEL:

STARTING POINT:

INTERSECTION OF C/L OF MONROE ST. AND C/L OF FURNANCE ST.

20-04385-D



SPLITS/DEEDS PROCESSED
LORAIN COUNTY TAX MAP DEPARTMENT
226 MIDDLE AVE. ELYRIA, OH

SURVEYED BY: THOMAS A. SIMON
CLOSURE: 1:90,295
MAP PAGE(S): 6-24-148
APPROVED BY: RRM DATE: 8-13-20
SCALE: 1" = 50 PRIOR INSTRUMENT: 20170645076