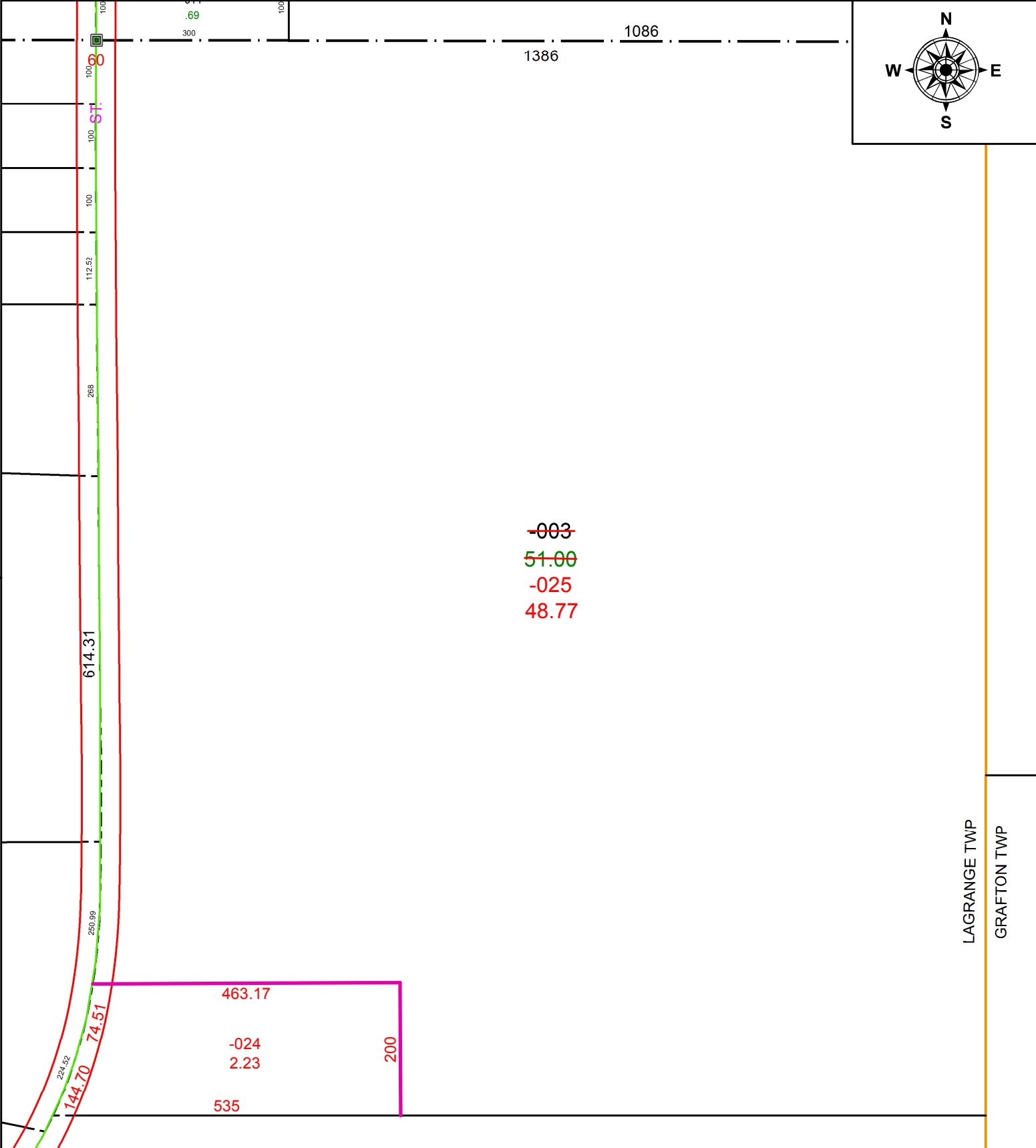
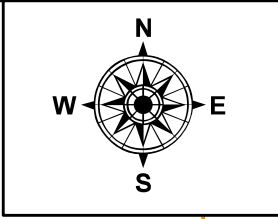


PARENT PARCEL: 15-00-091-000-003

CHILD PARCEL: 15-00-091-000-024, -025

STARTING POINT: C/L OF VERMONT ST AND NORTH LINE OF O/L 91

21-04384



SPLITS/DEEDS PROCESSED
LORAIN COUNTY TAX MAP DEPARTMENT
226 MIDDLE AVE. ELYRIA, OH

SURVEYED BY: PATRICK A. MCGANNON
CLOSURE: 1: 295663
MAP PAGE(S): 15-00-090
APPROVED BY: AC DATE: 10/5/2021
SCALE: 1" = 200 PRIOR INSTRUMENT: 2005- 0112636