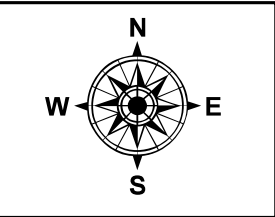
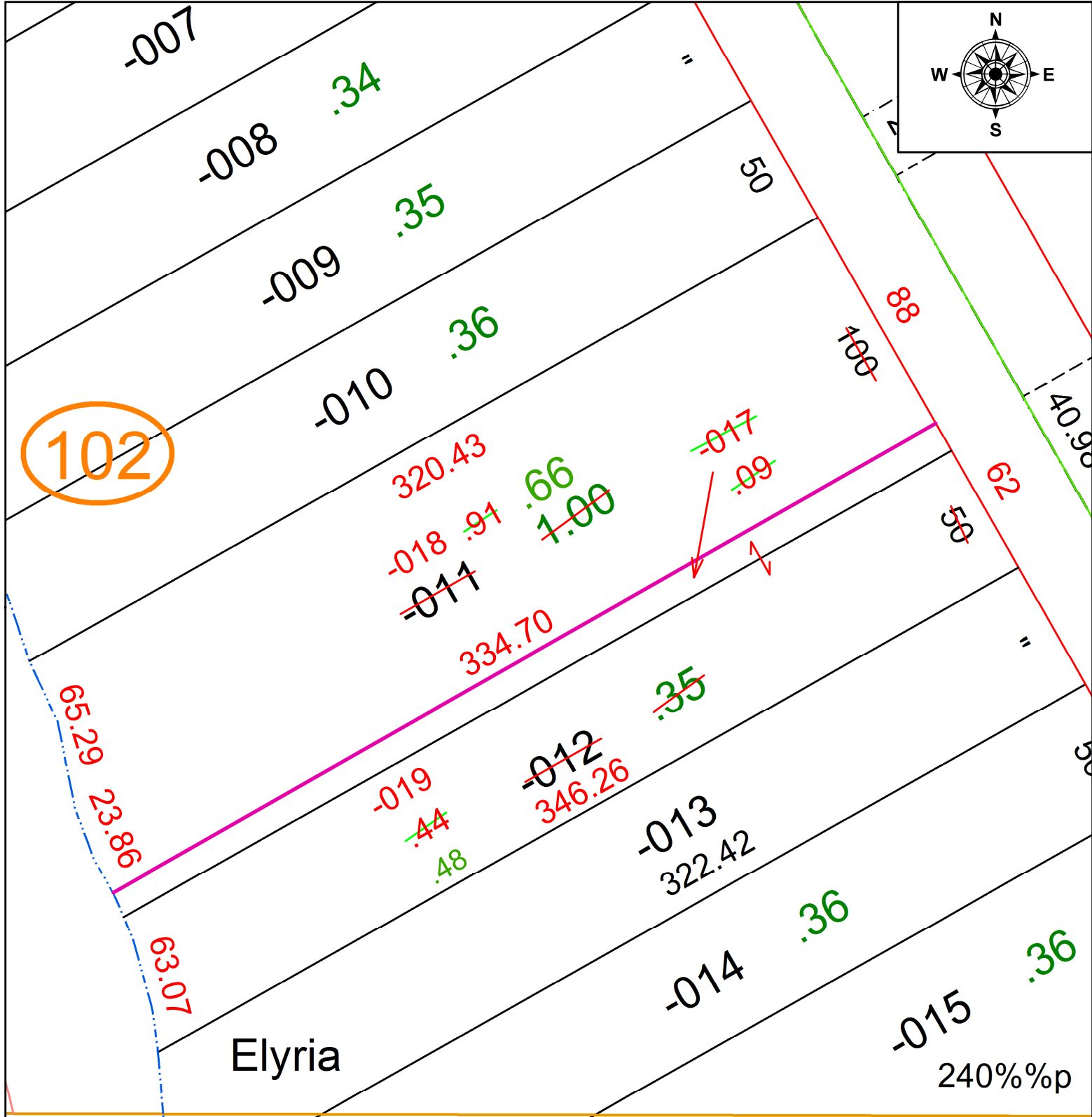


PARENT PARCEL: 06-25-085-102-011, -012

CHILD PARCEL: 06-25-085-102-017, -018, -019 **AC CORR PER SURV BY JOHN DECHANT JR**

STARTING POINT: WEST OF ROW OF EAST RIVER ST AND LUTH LINE OF O/L 85

21-04382



Elyria

240%%p

CARLISLE TWP

SPLITS/DEEDS PROCESSED
 LORAIN COUNTY TAX MAP DEPARTMENT
 226 MIDDLE AVE. ELYRIA, OH

SURVEYED BY: JOHN A. DECHANT JR
 CLOSURE: 1: 208298
 MAP PAGE(S): 06-25-085
 APPROVED BY: AC DATE: 9/21/2021
 SCALE: 1" = 50 PRIOR INSTRUMENT: 2020- 0762893