

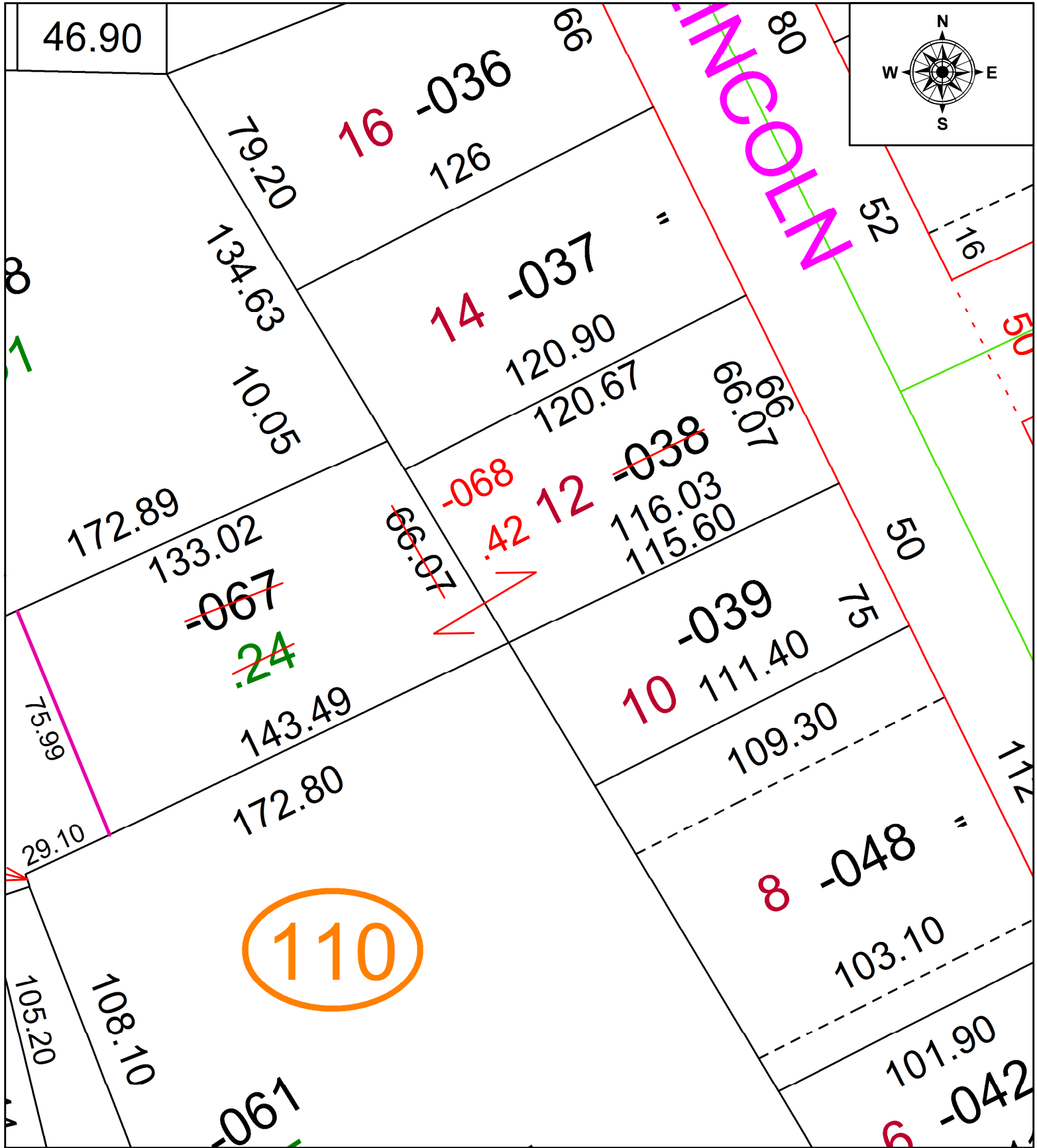
PARENT PARCEL: 05-00-023-110-038, -067

CHILD PARCEL: 05-00-023-110-068

COMBINATION

21-04378

STARTING POINT: NW CORNER OF S/L 12 RECORDED IN VOL 2 PG 17



SPLITS/DEEDS PROCESSED
 LORAIN COUNTY TAX MAP DEPARTMENT
 226 MIDDLE AVE. ELYRIA, OH

SURVEYED BY: PATRICK A. MCGANNON

CLOSURE: 1: 79792

MAP PAGE(S): 05-00-023-A

APPROVED BY: AC DATE: 9/23/2021

SCALE: 1" = 40 PRIOR INSTRUMENT: 2016- 0598750