

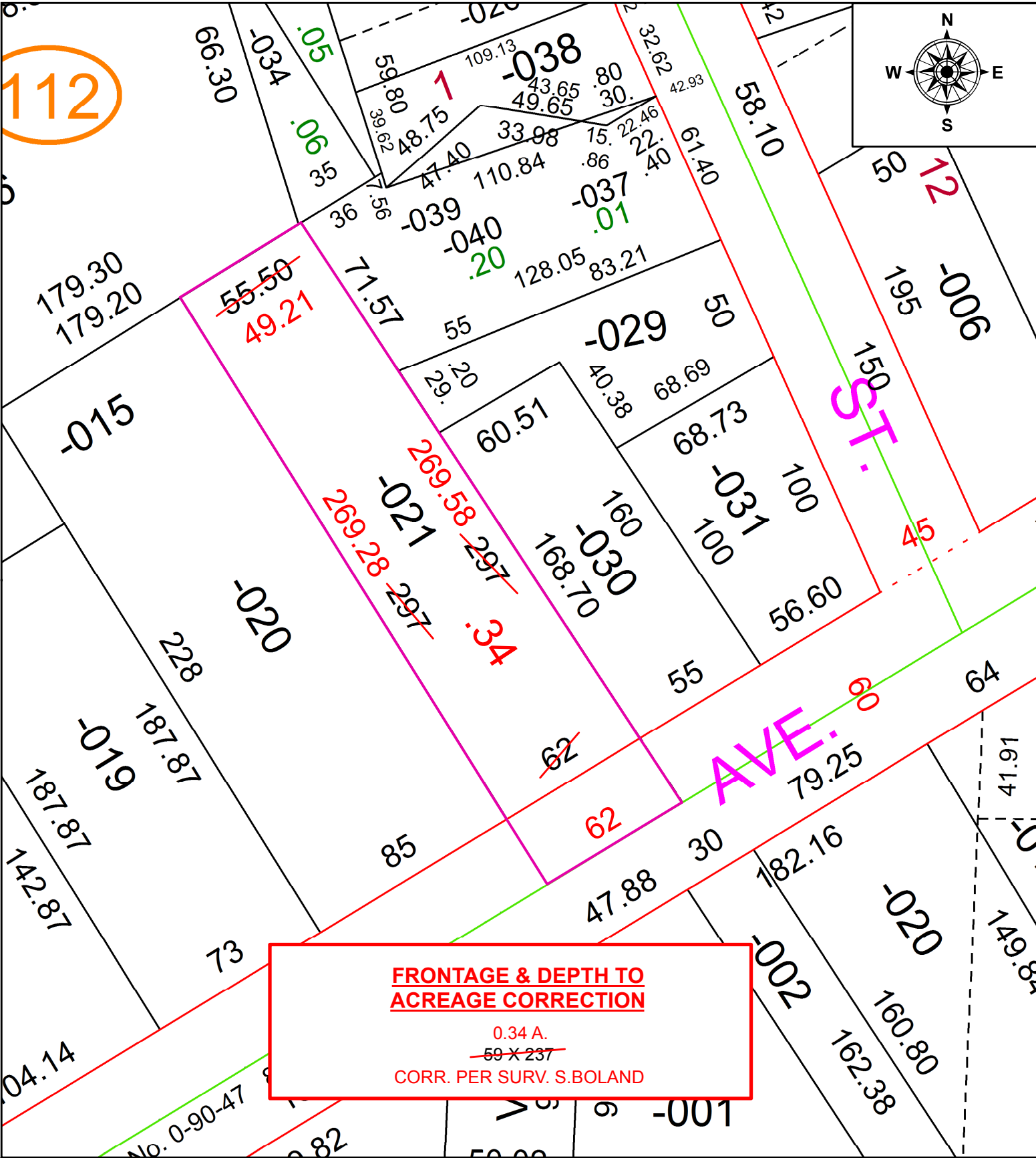
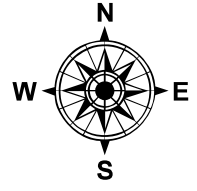
PARENT PARCEL: 05-00-023-112-021

CHILD PARCEL:

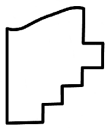
20-04377-D

STARTING POINT: INTERSECTION OF NORTH LINE OF CLEVELAND AVE. AND EAST LINE OF LINCOLN ST.

112



**FRONTAGE & DEPTH TO  
ACREAGE CORRECTION**  
0.34 A.  
~~59 X 237~~  
CORR. PER SURV. S.BOLAND



**SPLITS/DEEDS PROCESSED**  
LORAIN COUNTY TAX MAP DEPARTMENT  
226 MIDDLE AVE. ELYRIA, OH

SURVEYED BY: SEAN A. BOLAND  
CLOSURE: 1:159,902  
MAP PAGE(S): 5-00-023  
APPROVED BY: RRM DATE: 8-5-20  
SCALE: 1" = 50 PRIOR INSTRUMENT: 20140496641