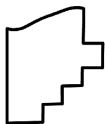
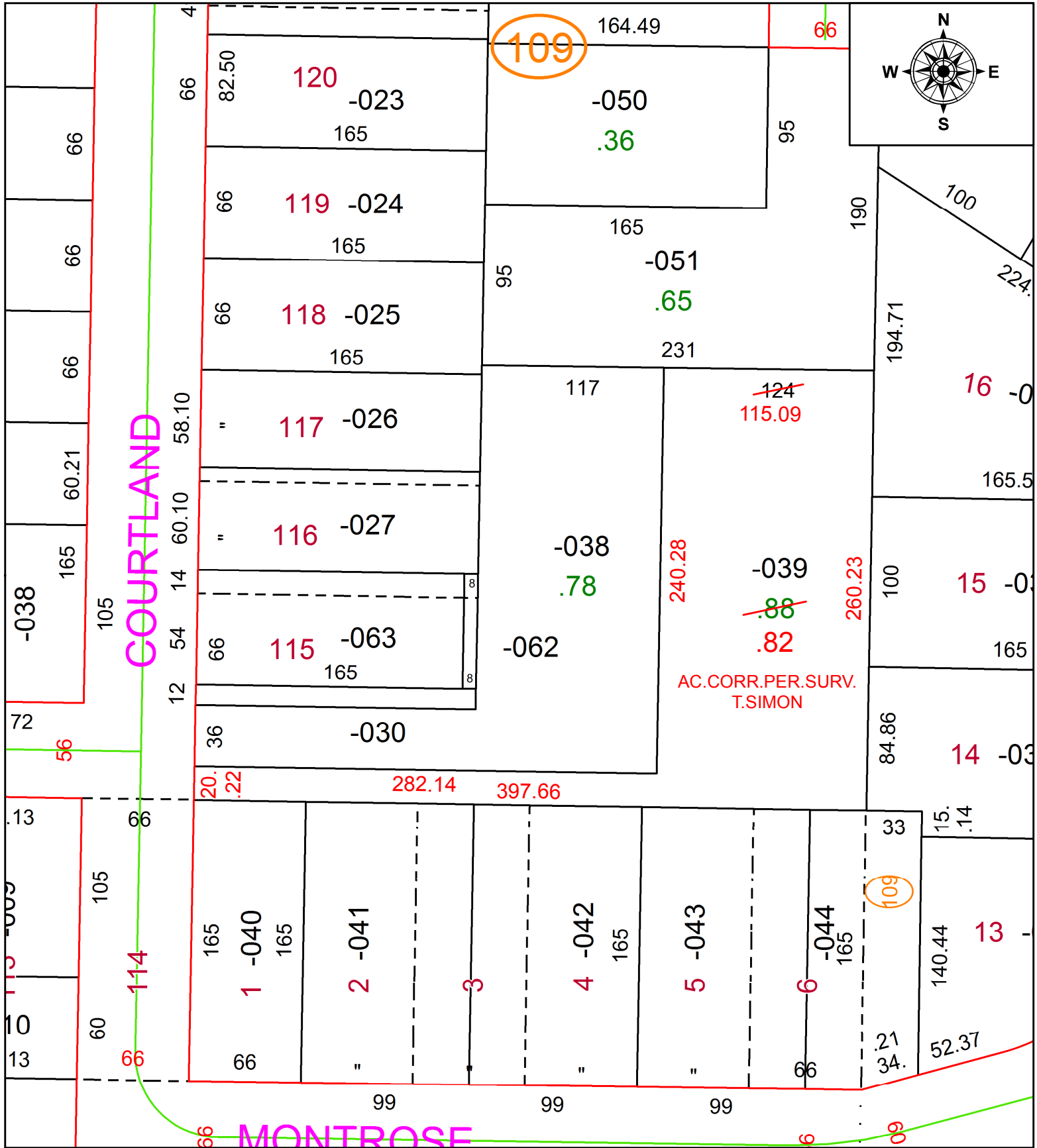


PARENT PARCEL: 18-00-022-109-039

CHILD PARCEL:

STARTING POINT: NORTHWEST CORNER OF S/L 1 IN OVERLOOK ADD. NO.1

20-04375-C



SPLITS/DEEDS PROCESSED
 LORAIN COUNTY TAX MAP DEPARTMENT
 226 MIDDLE AVE. ELYRIA, OH

SURVEYED BY: THOMAS A. SIMON
 CLOSURE: 1:183,596
 MAP PAGE(S): 18-00-022
 APPROVED BY: RRM DATE: 7-29-20
 SCALE: 1" = 75' PRIOR INSTRUMENT: 20190722795