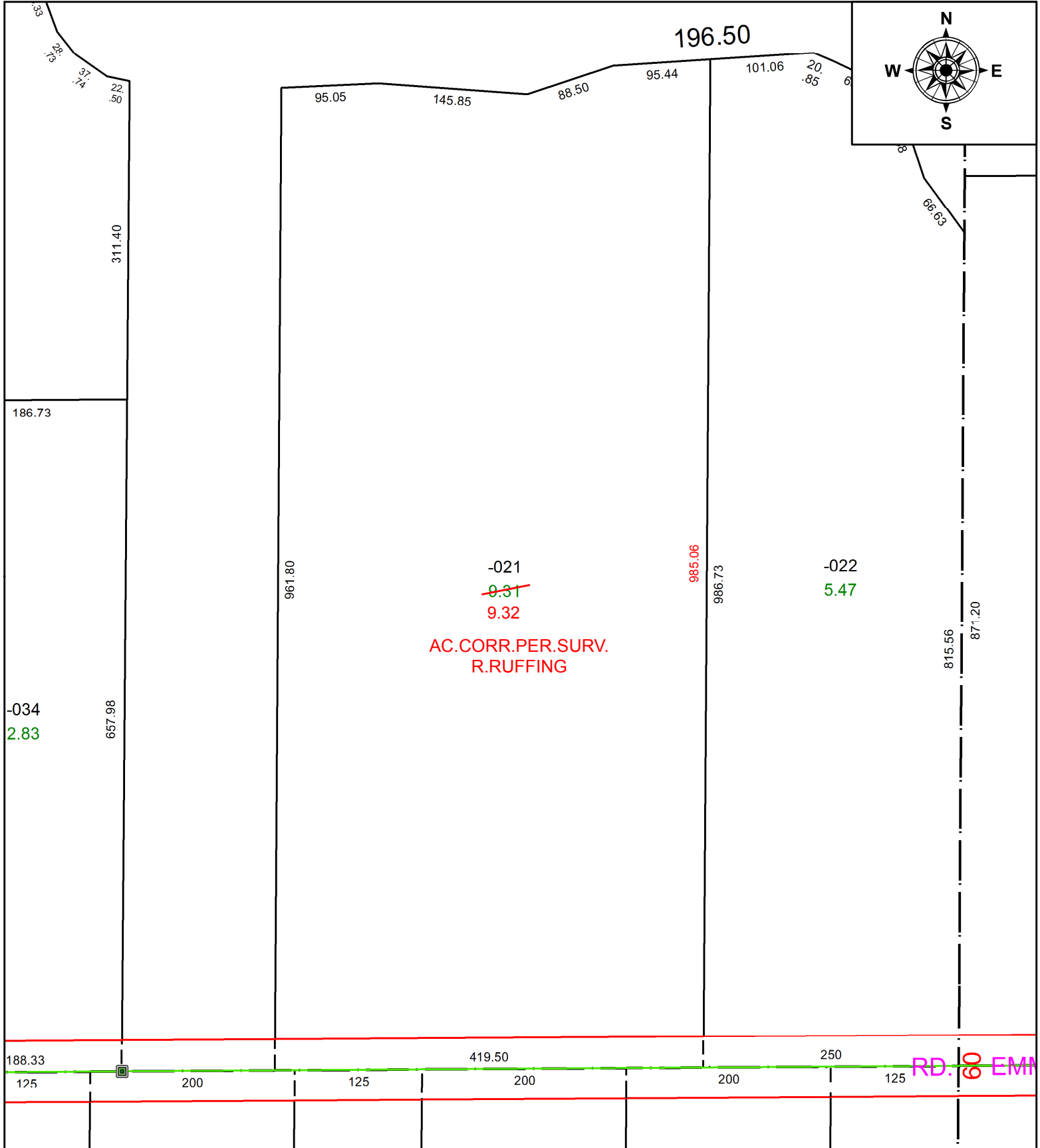


PARENT PARCEL: 12-00-013-000-021

CHILD PARCEL:

STARTING POINT: INTERSECTION OF C/L OF BOONE RD. AND C/L OF EMMONS RD.

20-04372-D



SPLITS/DEEDS PROCESSED
 LORAIN COUNTY TAX MAP DEPARTMENT
 226 MIDDLE AVE. ELYRIA, OH

SURVEYED BY: ROBERT M. RUFFING

CLOSURE: 1:735,440

MAP PAGE(S): 12-00-013

APPROVED BY: RRM DATE: 7-23-20

SCALE: 1" = 125 PRIOR INSTRUMENT: 20200745772