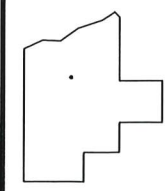
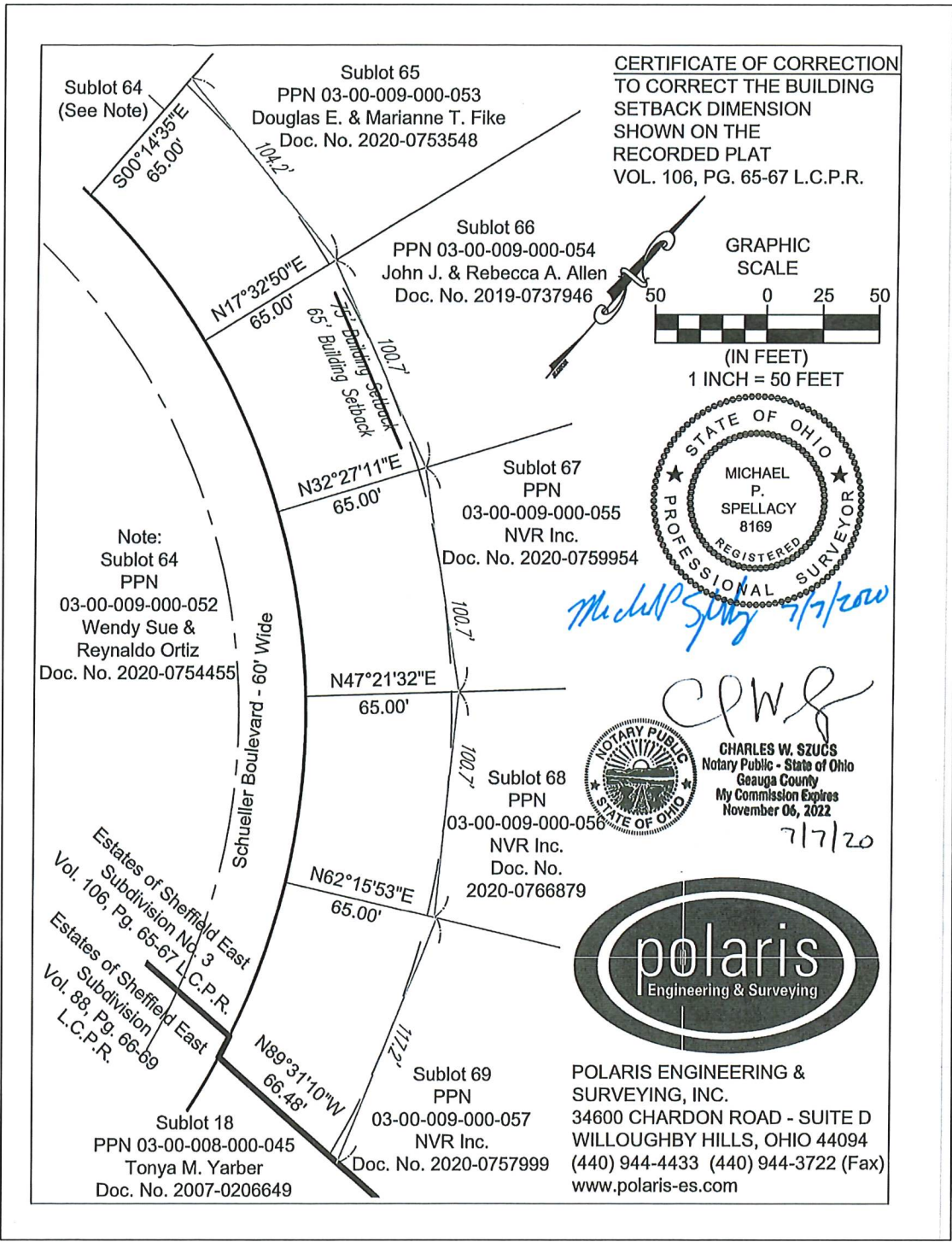


PARENT PARCEL: 03-00-009-000-053 THRU -057
 CHILD PARCEL: **BUILDING SETBACK CORRECTION PV. 106 PG. 65-67**
 STARTING POINT: XXXXXX

20-04370-C



SPLITS/DEEDS PROCESSED
 LORAIN COUNTY TAX MAP DEPARTMENT
 226 MIDDLE AVE. ELYRIA, OHIO

SURVEYED BY: MIKE SPELACY
 CLOSURE: NA
 MAP PAGE(S): 03-00-009
 APPROVED BY: TJS DATE: 7/16/2020
 SCALE: 1"=100 PRIOR INST.: DV XXXX/XXX