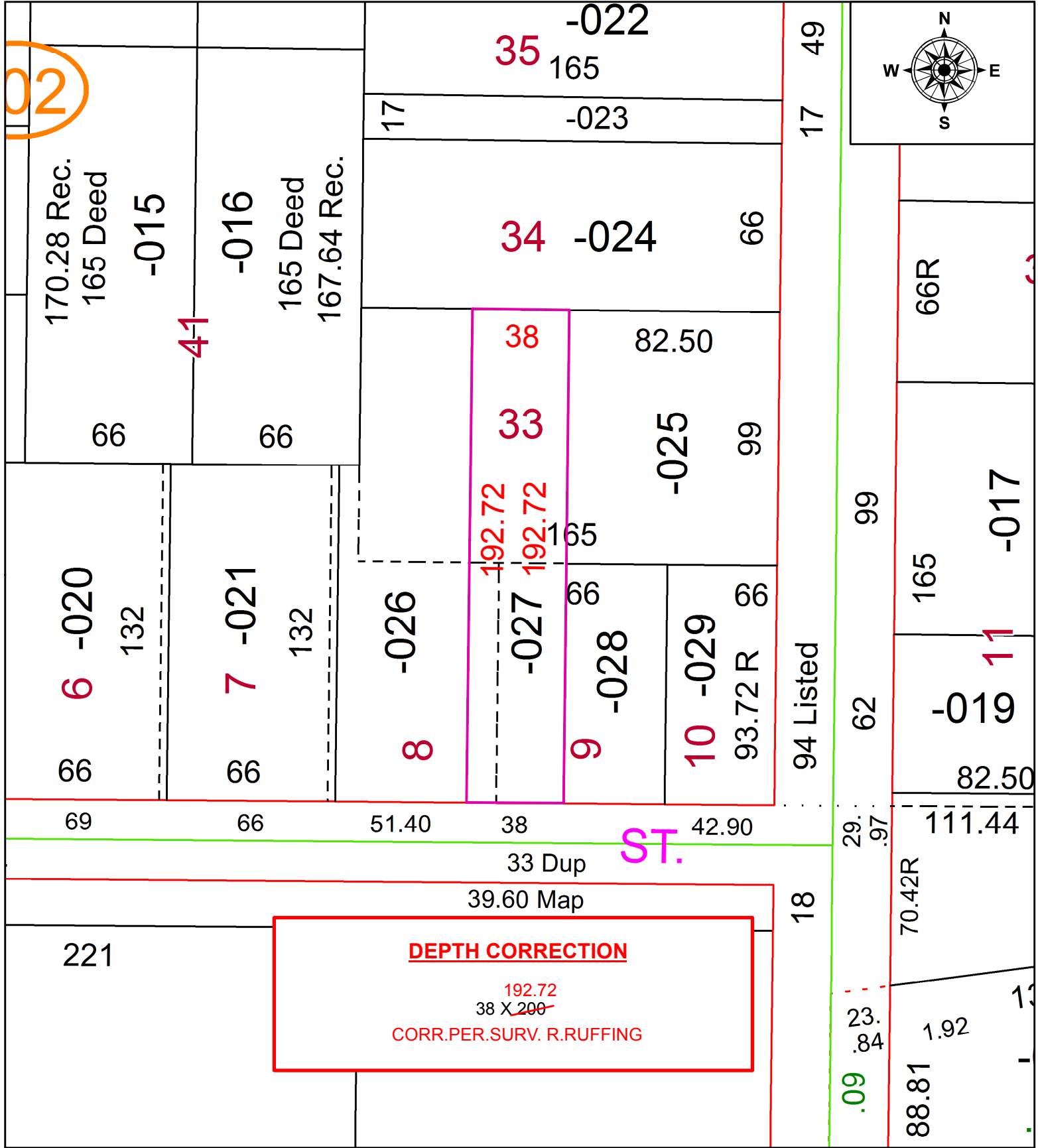


PARENT PARCEL: 09-00-096-102-027

CHILD PARCEL:

STARTING POINT: INTERSECTION OF C/L OF SOUTH ST. AND C/L OF S. MAIN ST.

20-04369-D



**SPLITS/DEEDS PROCESSED**  
 LORAIN COUNTY TAX MAP DEPARTMENT  
 226 MIDDLE AVE. ELYRIA, OH

SURVEYED BY: ROBERT M. RUFFING

CLOSURE: 1: 2147483648

MAP PAGE(S): 9-00-096

APPROVED BY: RRM DATE: 7-17-20

SCALE: 1" = 50 PRIOR INSTRUMENT: 20000680741