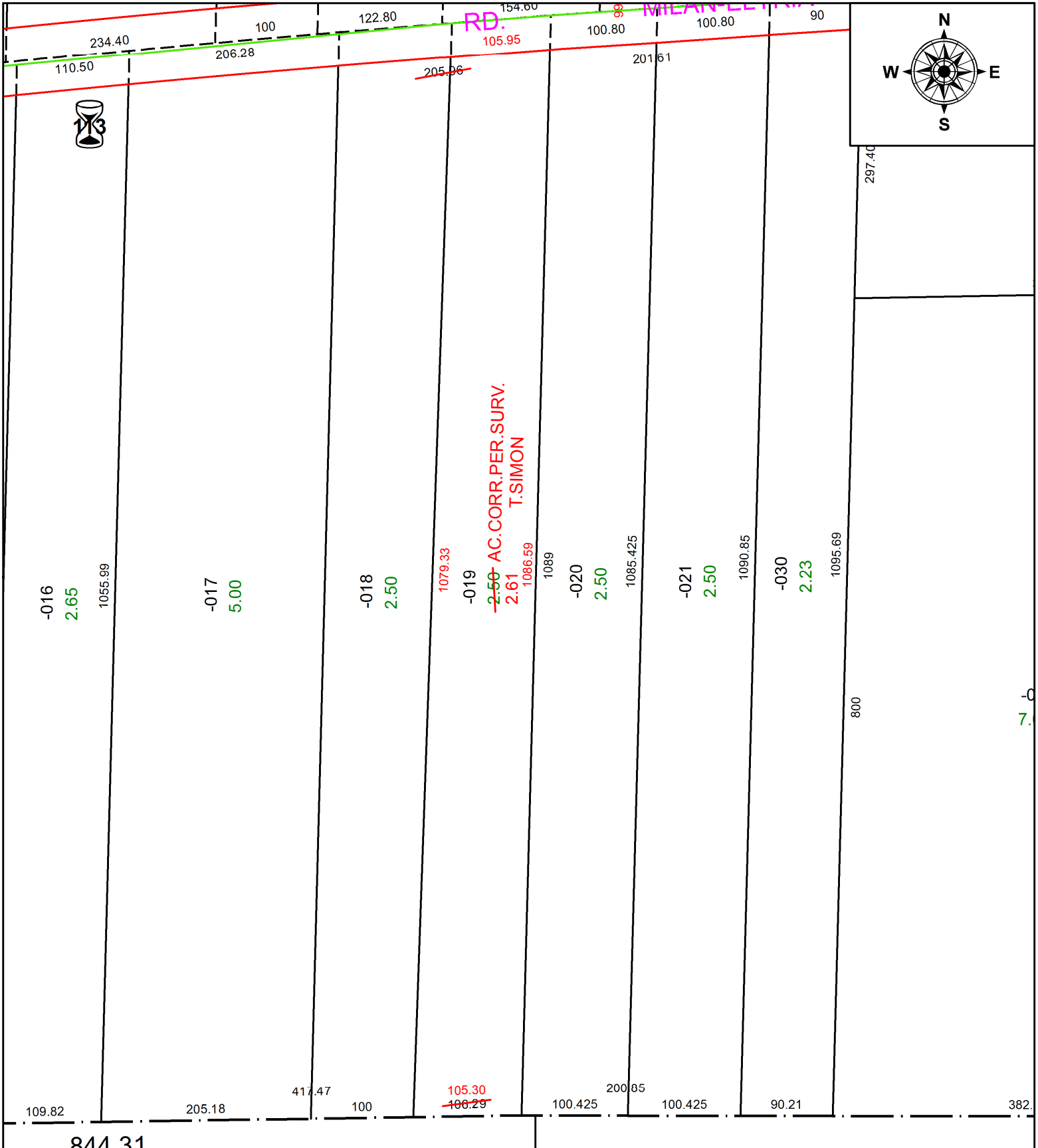


PARENT PARCEL: 05-00-068-000-019

CHILD PARCEL:

STARTING POINT: SOUTHWEST CORNER OF O.L.68

20-04366-C



844 31



**SPLITS/DEEDS PROCESSED**  
 LORAIN COUNTY TAX MAP DEPARTMENT  
 226 MIDDLE AVE. ELYRIA, OH

SURVEYED BY: THOMAS A. SIMON  
 CLOSURE: 1:315,748  
 MAP PAGE(S): 5-00-068  
 APPROVED BY: RRM DATE: 7-13-20  
 SCALE: 1" = 125 PRIOR INSTRUMENT: 20180661235