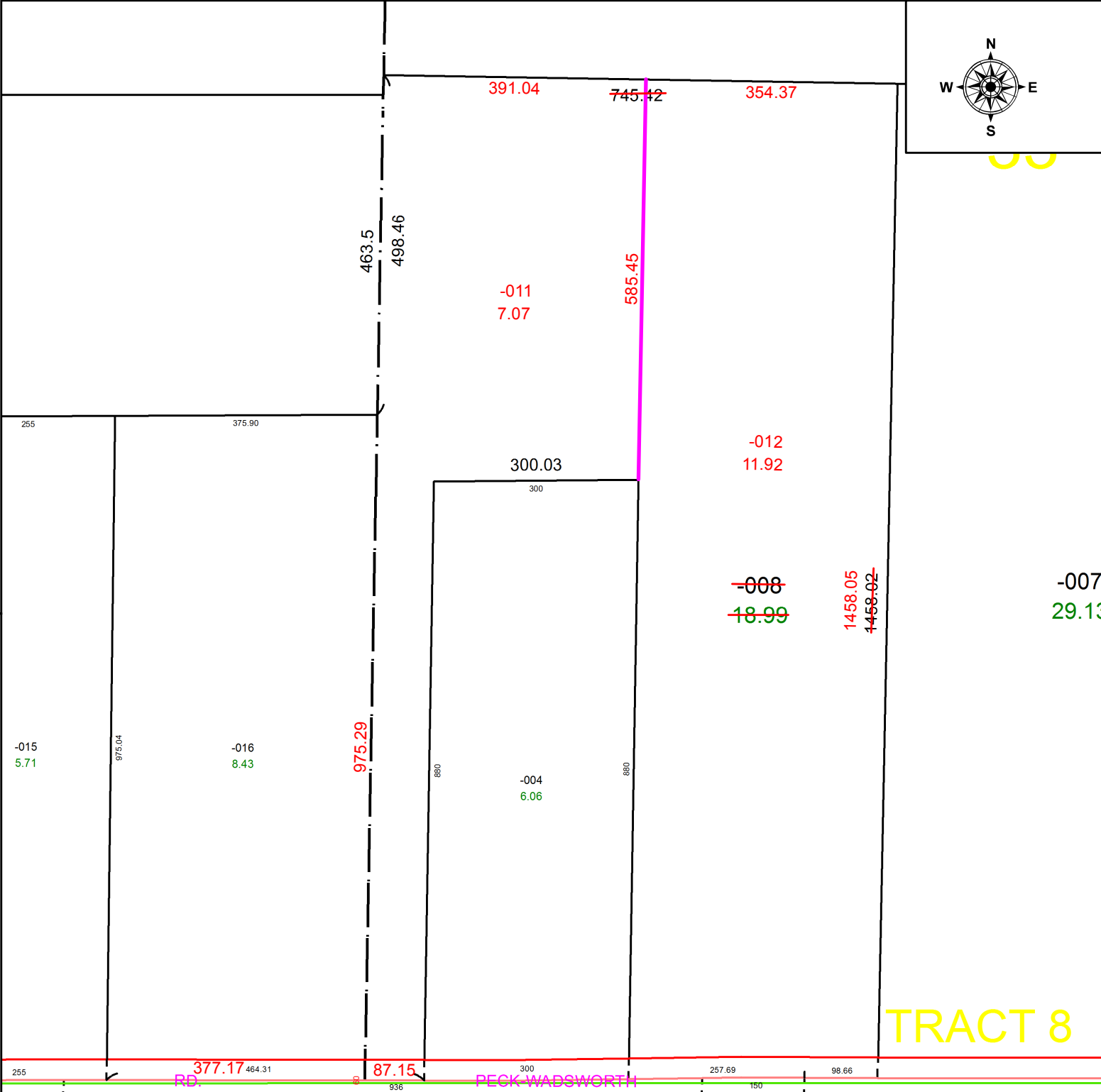
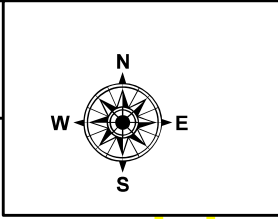


PARENT PARCEL: 17-08-033-000-008 & 17-08-034-000-016

CHILD PARCEL: 17-08-033-000-011, -012 & 17-08-034-000-016

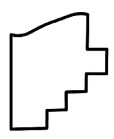
STARTING POINT: INTERSECTION OF C/LS OF PECK WADSWORTH RD & ST RT 511

21-04365



TRACT 8

TRACT 7



**SPLITS/DEEDS PROCESSED**  
LORAIN COUNTY TAX MAP DEPARTMENT  
226 MIDDLE AVE. ELYRIA, OH

SURVEYED BY: TIMOTHY HOZALSKI  
CLOSURE: 1: 1,051,246  
MAP PAGE(S): 17-08-033  
APPROVED BY: WRZ DATE: 9/17/2021  
SCALE: 1" = 200 PRIOR INSTRUMENT: 2019-0705835