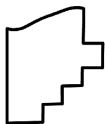
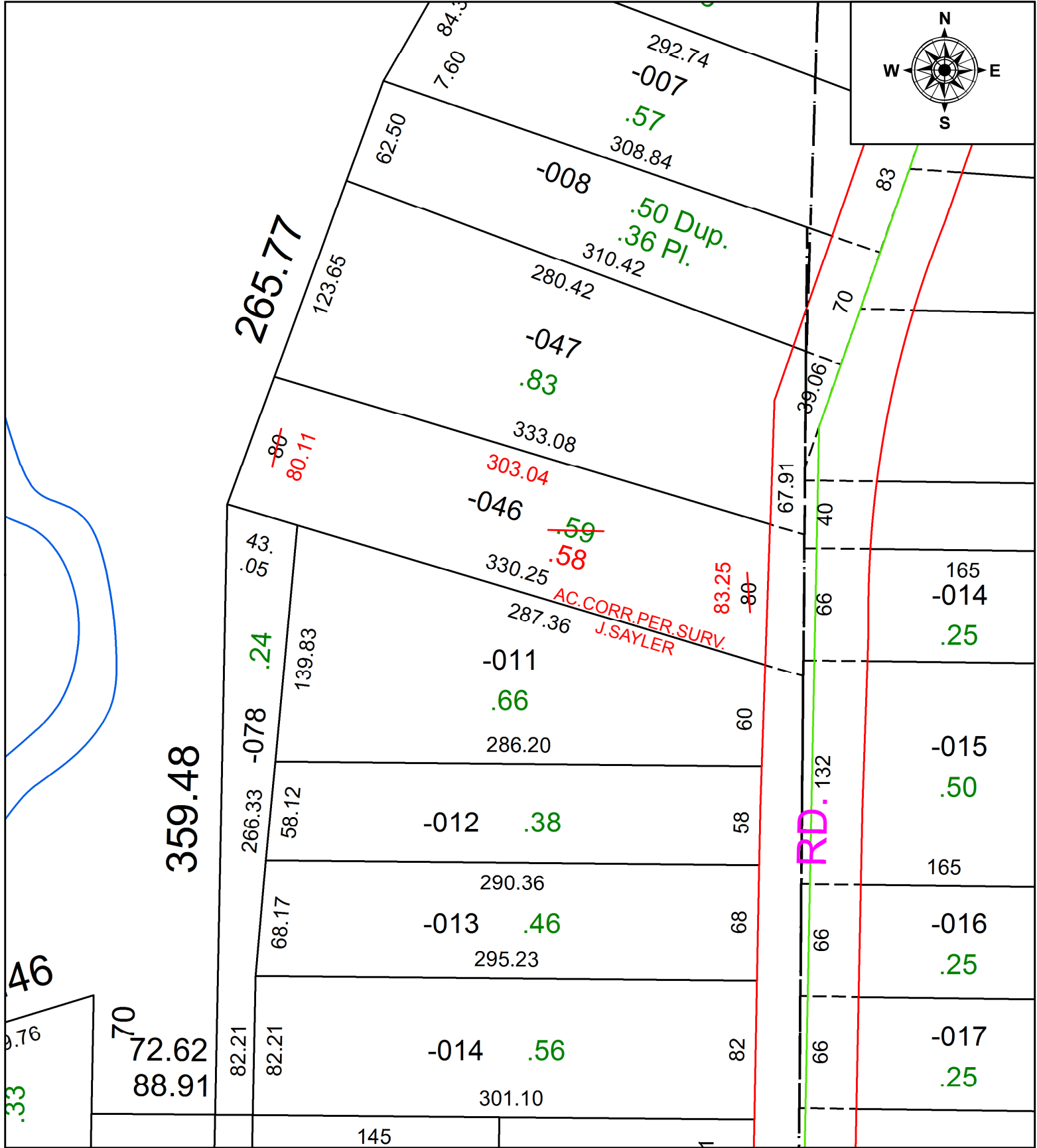


PARENT PARCEL: 05-00-009-000-046

CHILD PARCEL:

STARTING POINT: INTERSECTION OF C/L OF N.LAKE ST. AND C/L OF BUCKEYE ST.

20-04362-D



**SPLITS/DEEDS PROCESSED**  
 LORAIN COUNTY TAX MAP DEPARTMENT  
 226 MIDDLE AVE. ELYRIA, OH

SURVEYED BY: JAMES T. SAYLER  
 CLOSURE: 1:246,667  
 MAP PAGE(S): 5-00-009  
 APPROVED BY: RRM DATE: 7-9-20  
 SCALE: 1" = 75' PRIOR INSTRUMENT: 20200755989