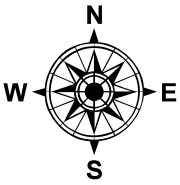
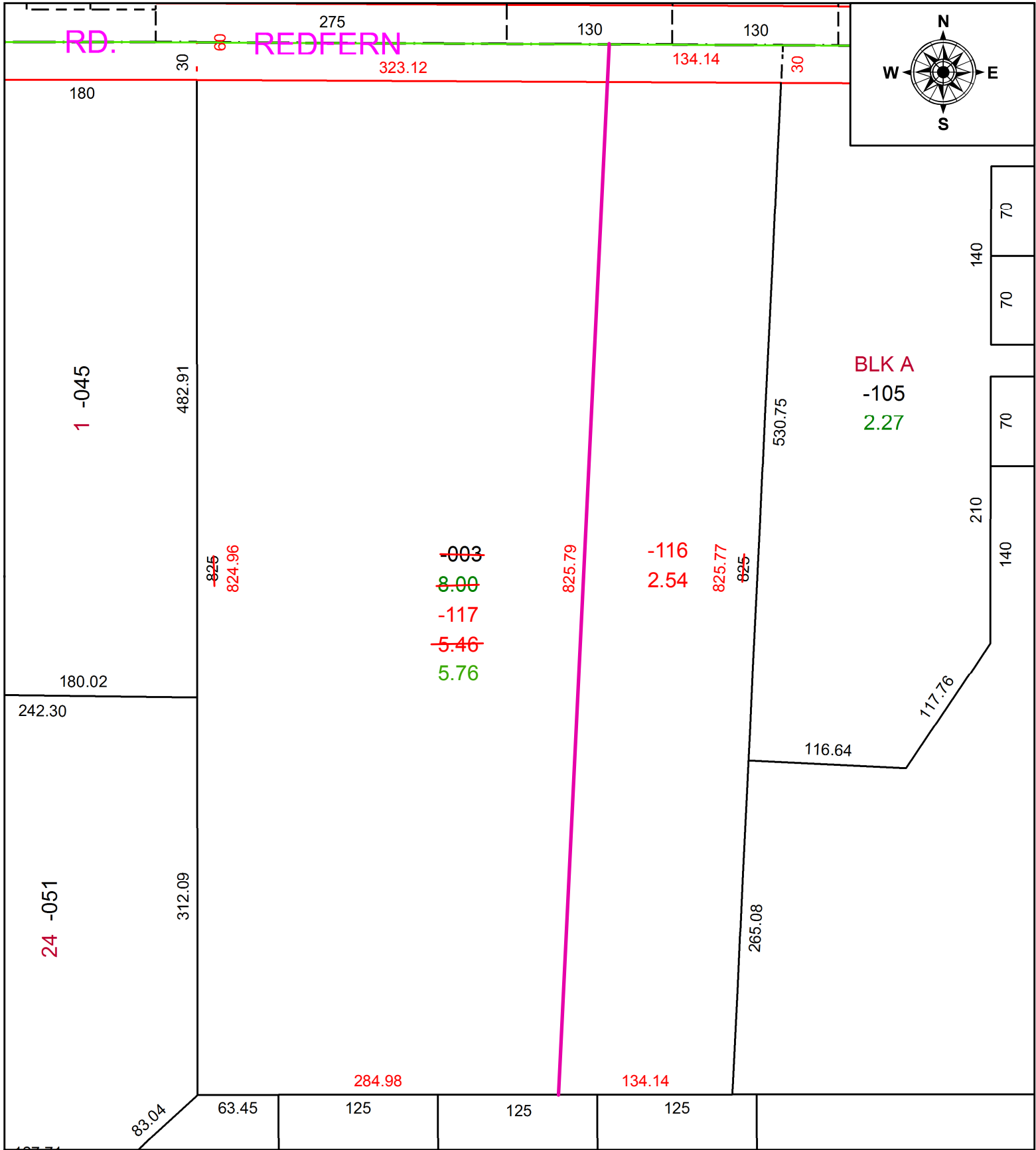


PARENT PARCEL: 12-00-019-000-003

CHILD PARCEL: 12-00-019-000-116, -117 AC CORR PER SURV BY JOHN HOY AND ASSOC

STARTING POINT: NW CORNER OF OL 19 AND C/L OF REDFERN RD

21-04360



BLK A  
-105  
2.27

1 -045

24 -051

~~003~~  
8.00  
-117  
~~5.46~~  
5.76

~~825~~  
824.96

-116  
2.54

825.77  
~~625~~

**SPLITS/DEEDS PROCESSED**  
LORAIN COUNTY TAX MAP DEPARTMENT  
226 MIDDLE AVE. ELYRIA, OH

SURVEYED BY: JOHN R. HOY AND ASSOCIATES  
CLOSURE: 1: 1324272  
MAP PAGE(S): 12-00-019  
APPROVED BY: AC DATE: 9/1/2021  
SCALE: 1" = 100 PRIOR INSTRUMENT: 2016- 0602295