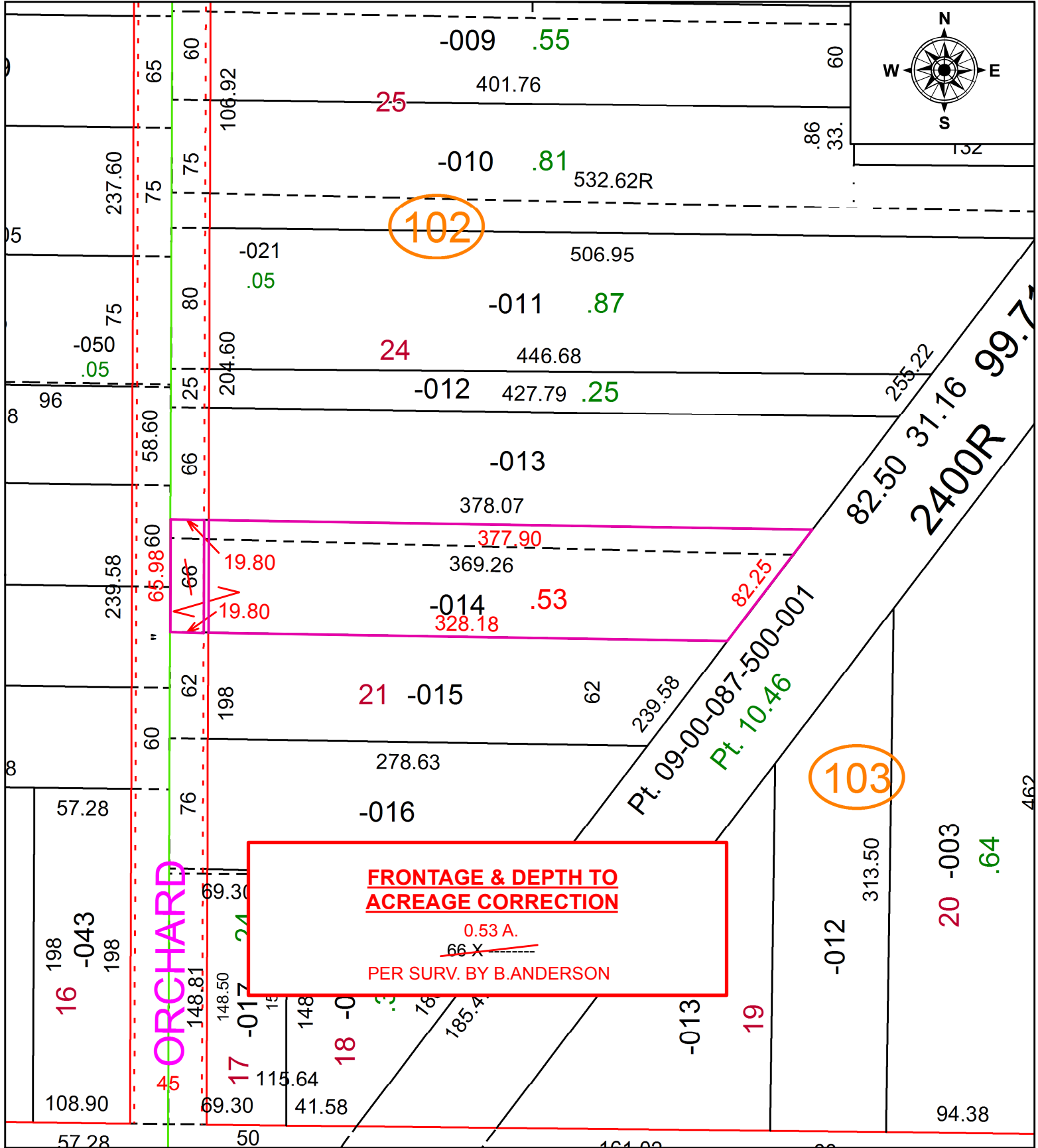


PARENT PARCEL: 09-00-087-102-014

CHILD PARCEL:

STARTING POINT: INTERSECTION OF C/L OF EAST LORAIN ST. AND C/L OF ORCHARD ST.

20-04360-D



SPLITS/DEEDS PROCESSED
 LORAIN COUNTY TAX MAP DEPARTMENT
 226 MIDDLE AVE. ELYRIA, OH

SURVEYED BY: BRENT D. ANDERSON
 CLOSURE: 1:201,913
 MAP PAGE(S): 9-00-087
 APPROVED BY: RRM DATE: 7-9-20
 SCALE: 1" = 75' PRIOR INSTRUMENT: 20190700009