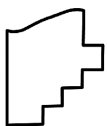
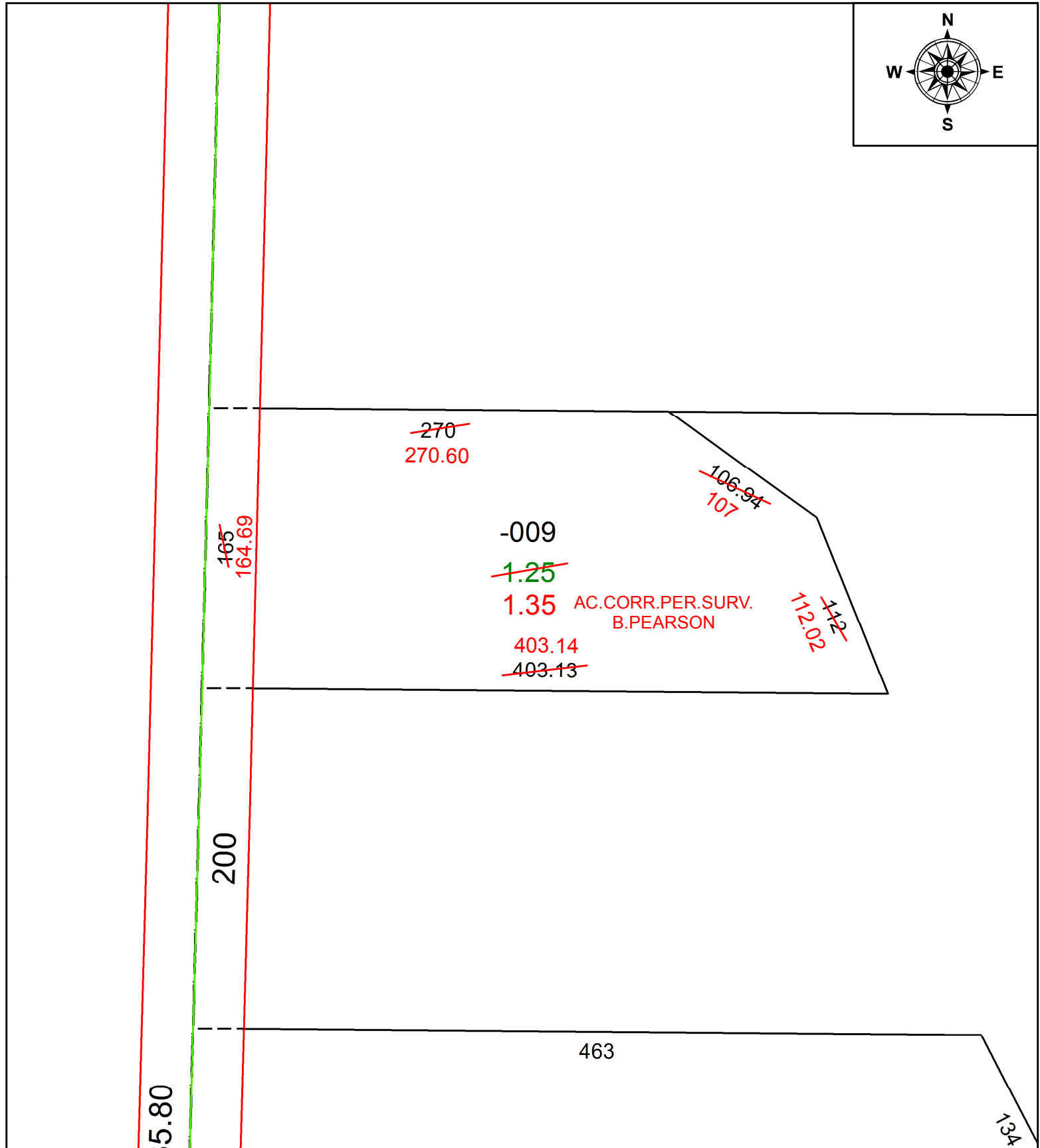
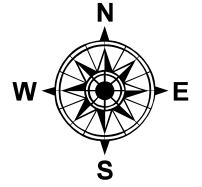


PARENT PARCEL: 12-00-063-102-009

CHILD PARCEL:

STARTING POINT: INTERSECTION OF C/L OF NICHOLS RD. AND C/L OF STATION RD.

20-04346-D



**SPLITS/DEEDS PROCESSED**  
 LORAIN COUNTY TAX MAP DEPARTMENT  
 226 MIDDLE AVE. ELYRIA, OH

SURVEYED BY: BETH A. PEARSON

CLOSURE: 1:390,196

MAP PAGE(S): 12-00-063

APPROVED BY: RRM DATE: 6-5-20

SCALE: 1" = 75 PRIOR INSTRUMENT: 20160588089