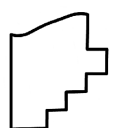
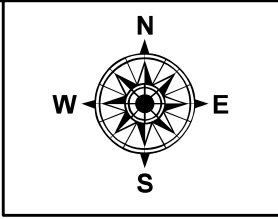
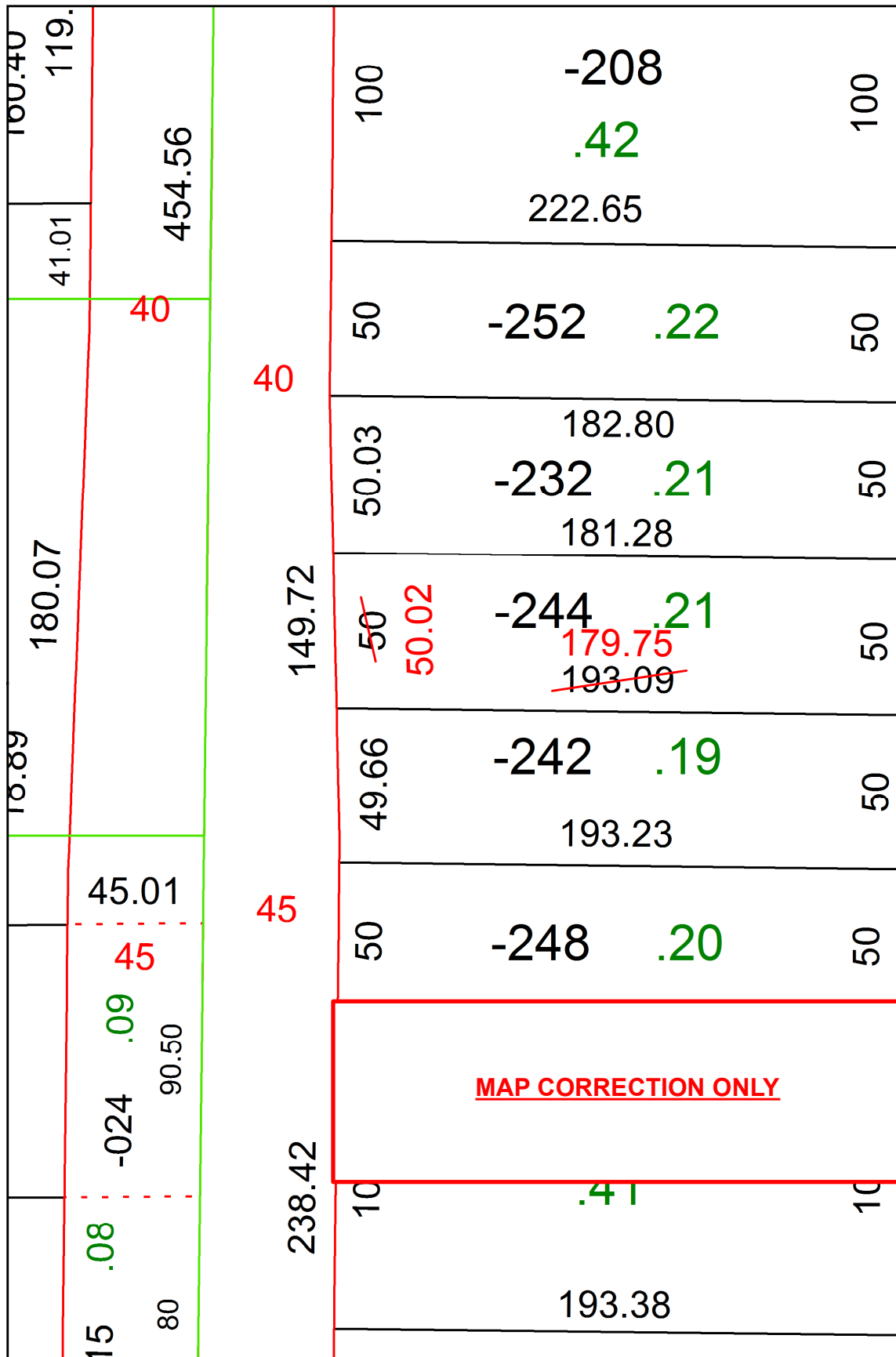


PARENT PARCEL: 02-01-008-101-244

CHILD PARCEL:

20-04343-D

STARTING POINT: INTERSECTION OF C/L OF OBERLIN AVE, AND C/L OF COOPER FOSTER PARK RD.



SPLITS/DEEDS PROCESSED
 LORAIN COUNTY TAX MAP DEPARTMENT
 226 MIDDLE AVE. ELYRIA, OH

SURVEYED BY: PATRICK A. MCGANNON
 CLOSURE: 1:79,512
 MAP PAGE(S): 2-01-008
 APPROVED BY: RRM DATE: 5-28-20
 SCALE: 1" = 50' PRIOR INSTRUMENT: 2018067777