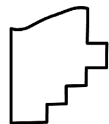
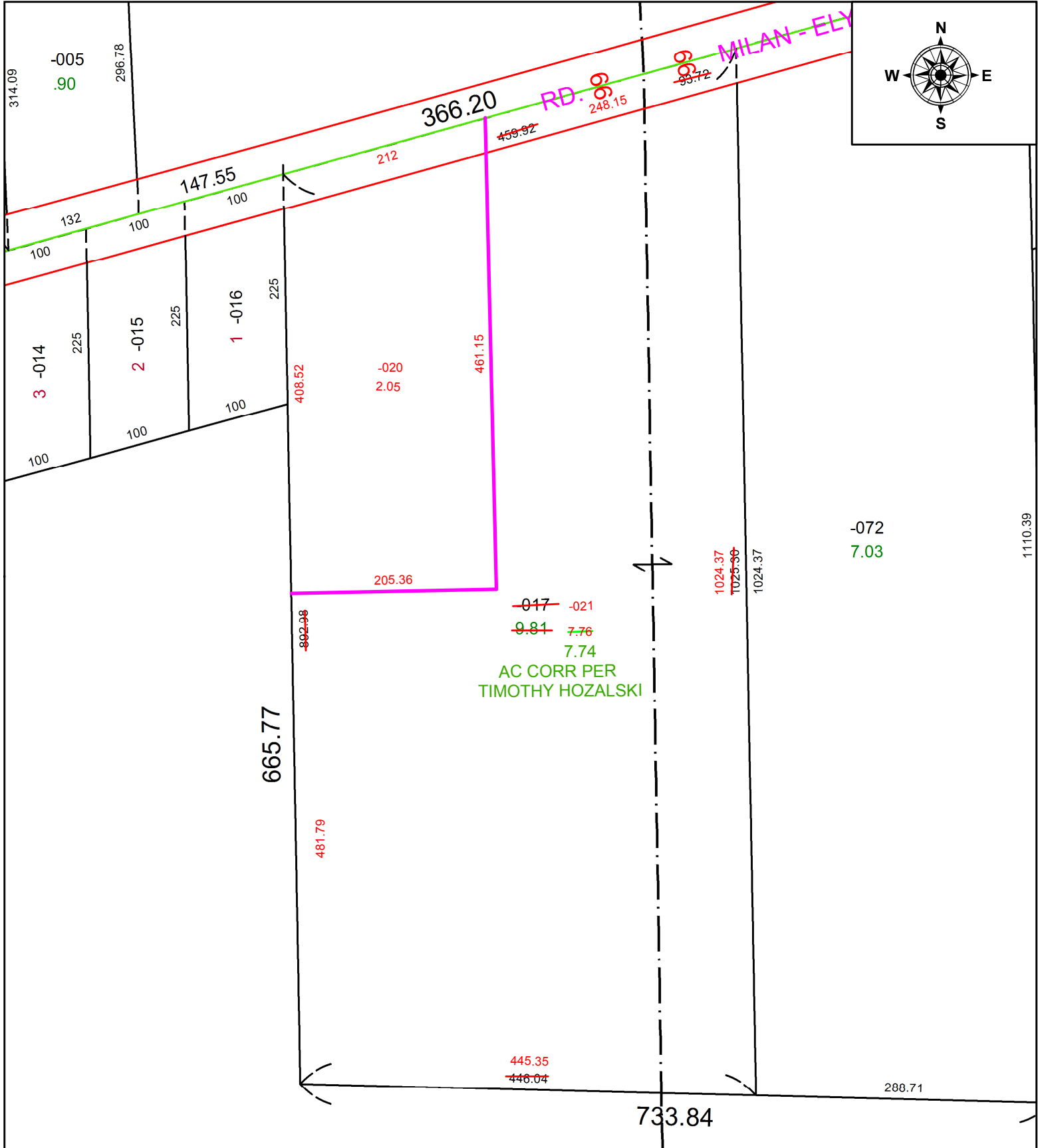


PARENT PARCEL: 08-00-092-104-017

CHILD PARCEL: 08-00-092-104-020 & -021

STARTING POINT: INTERSECTION OF C/LS OF SR 113 AND GIFFORD RD

21-04339



SPLITS/DEEDS PROCESSED
 LORAIN COUNTY TAX MAP DEPARTMENT
 226 MIDDLE AVE. ELYRIA, OH

SURVEYED BY: TIMOTHY HOZALSKI
CLOSURE: 1: 378,894
MAP PAGE(S): 08-00-092
APPROVED BY: WRZ **DATE:** 8/25/2021
SCALE: 1" = 125 **PRIOR INSTRUMENT:** 2020-0749061