

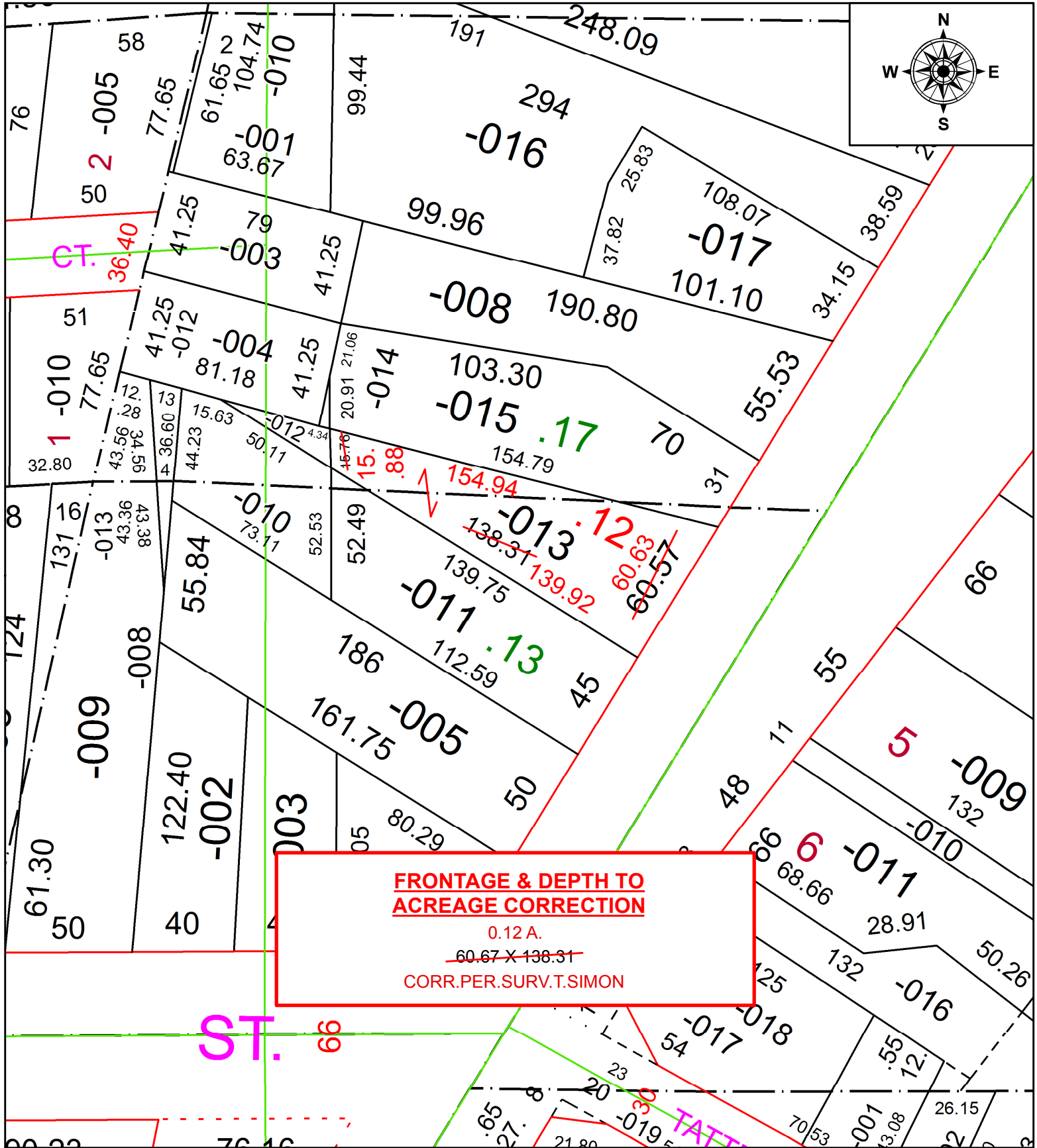
PARENT PARCEL: 06-24-073-000-013

CHILD PARCEL:

STARTING POINT:

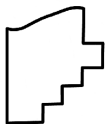
INTERSECTION OF OLD R.O.W LINE OF LAKE AVE. AND C/L OF WEST RIVER RD.

20-04337-D



**FRONTAGE & DEPTH TO
ACREAGE CORRECTION**

0.12 A.
~~60.67 X 138.31~~
154.94 X 139.92
CORR. PER. SURV. T. SIMON



SPLITS/DEEDS PROCESSED
LORAIN COUNTY TAX MAP DEPARTMENT
226 MIDDLE AVE. ELYRIA, OH

SURVEYED BY: THOMAS A. SIMON
CLOSURE: 1:129,015
MAP PAGE(S): 6-24-073
APPROVED BY: RRM DATE: 5-26-20
SCALE: 1" = 50 PRIOR INSTRUMENT: 20130443807