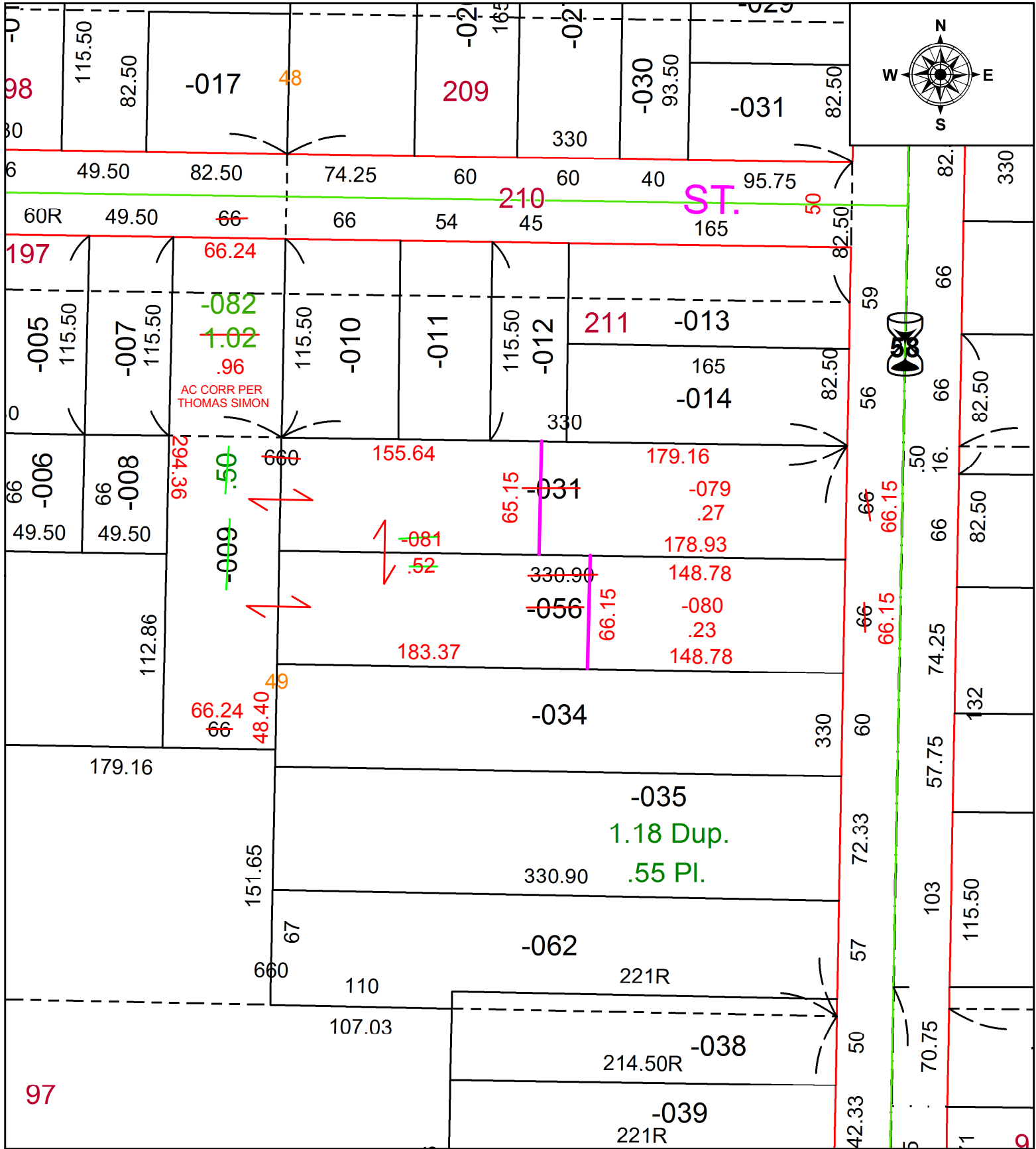


PARENT PARCEL: 09-00-075-110-009, -031, -056

CHILD PARCEL: 09-00-075-110-079 THRU -082

21-04336

STARTING POINT: INTERSECTION OF C/L'S NORTH MAIN ST & UNION ST



**SPLITS/DEEDS PROCESSED**

LORAIN COUNTY TAX MAP DEPARTMENT  
226 MIDDLE AVE. ELYRIA, OH

SURVEYED BY: THOMAS SIMON

CLOSURE: 1: 237,497

MAP PAGE(S): 09-00-075

APPROVED BY: WRZ DATE: 7/30/2021

SCALE: 1" = 75' PRIOR INSTRUMENT: 2003-0921671