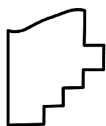
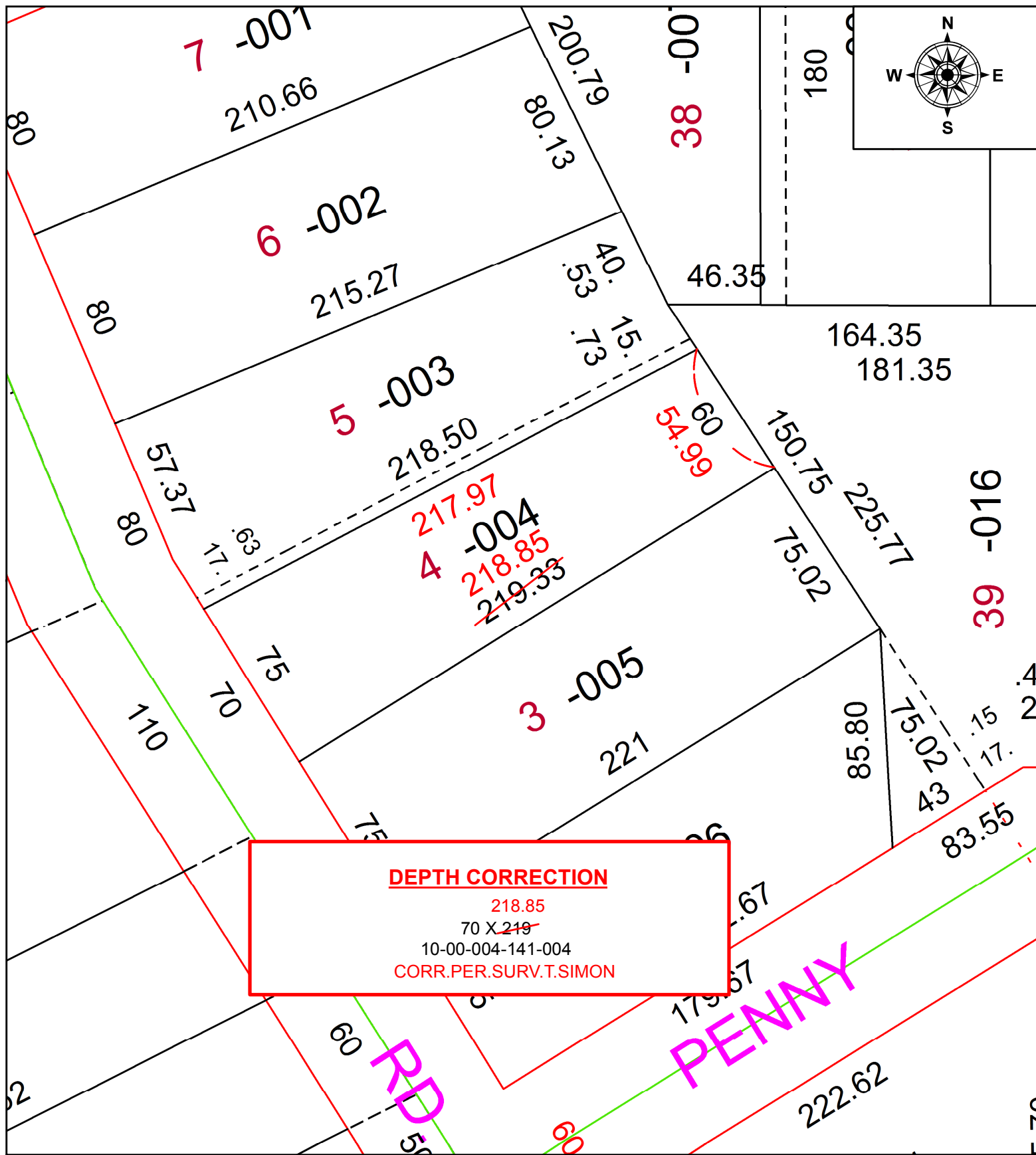


PARENT PARCEL: 10-00-004-141-004

CHILD PARCEL:

STARTING POINT: NORTHWEST CORNER OF S/L 3 IN CUSICK ALLOT. NO.1

20-04335-A



SPLITS/DEEDS PROCESSED
 LORAIN COUNTY TAX MAP DEPARTMENT
 226 MIDDLE AVE. ELYRIA, OH

SURVEYED BY: THOMAS A. SIMON
 CLOSURE: 1:6,281,058
 MAP PAGE(S): 10-00-004
 APPROVED BY: RRM DATE: 5-20-20
 SCALE: 1" = 50 PRIOR INSTRUMENT: 20110397001