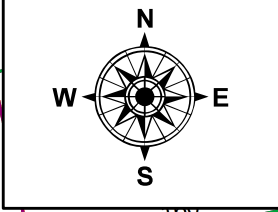
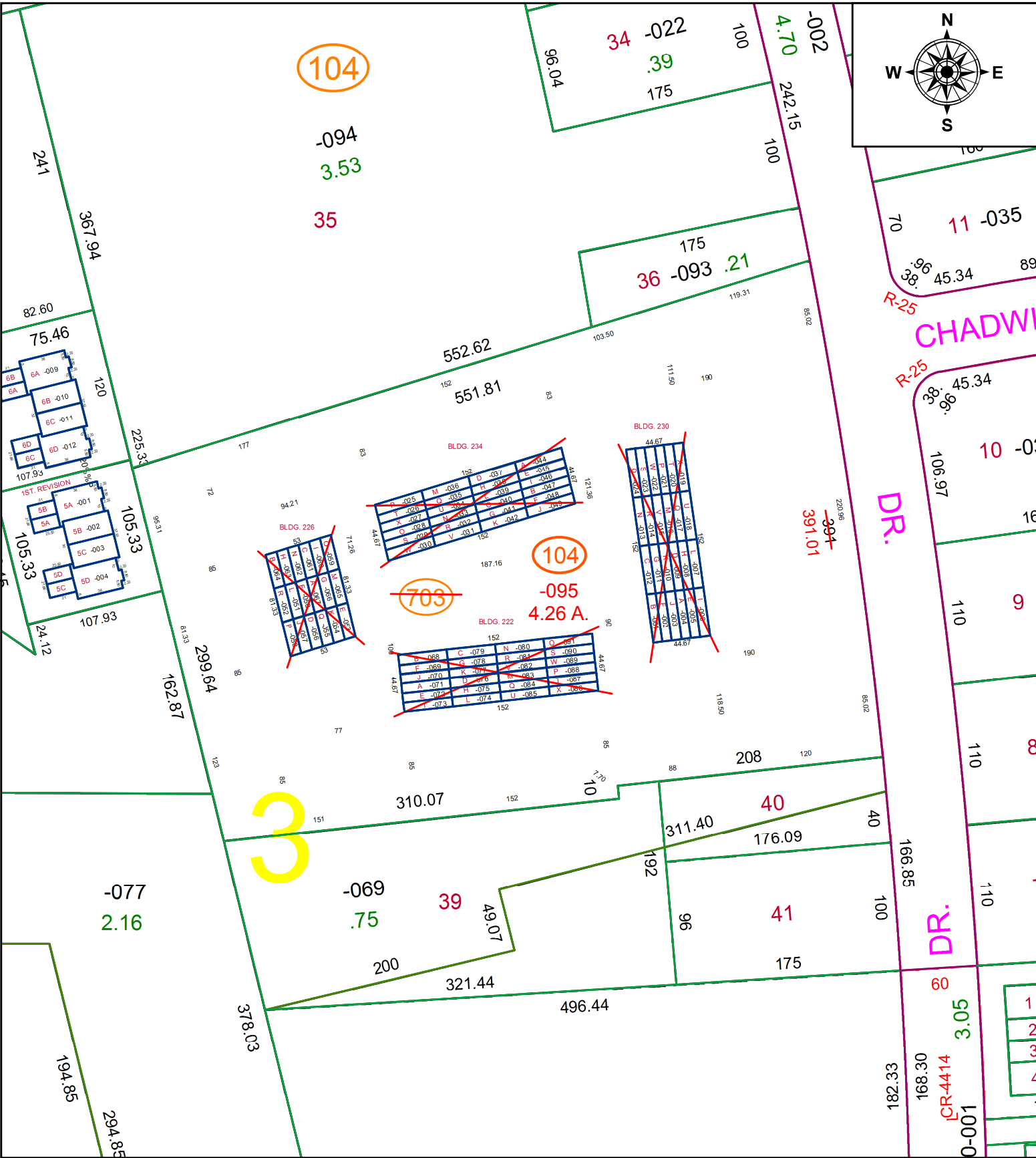


PARENT PARCEL: 06-24-003-703-001 THRU -091

CHILD PARCEL: 06-24-003-104-095 4.26 A.

STARTING POINT: MAG. NAIL SET, CL OF CHADWICK COURT & CL OF BRUNSWICK DRIVE

21-04332



SPLITS/DEEDS PROCESSED
 LORAIN COUNTY TAX MAP DEPARTMENT
 226 MIDDLE AVE. ELYRIA, OH

SURVEYED BY: STEVE METCALF
 CLOSURE: 1:405597
 MAP PAGE(S): 06-24-007
 APPROVED BY: TJS DATE: 8/2/2021
 SCALE: 1" = 100' PRIOR INSTRUMENT: PV. 35 PG. 23