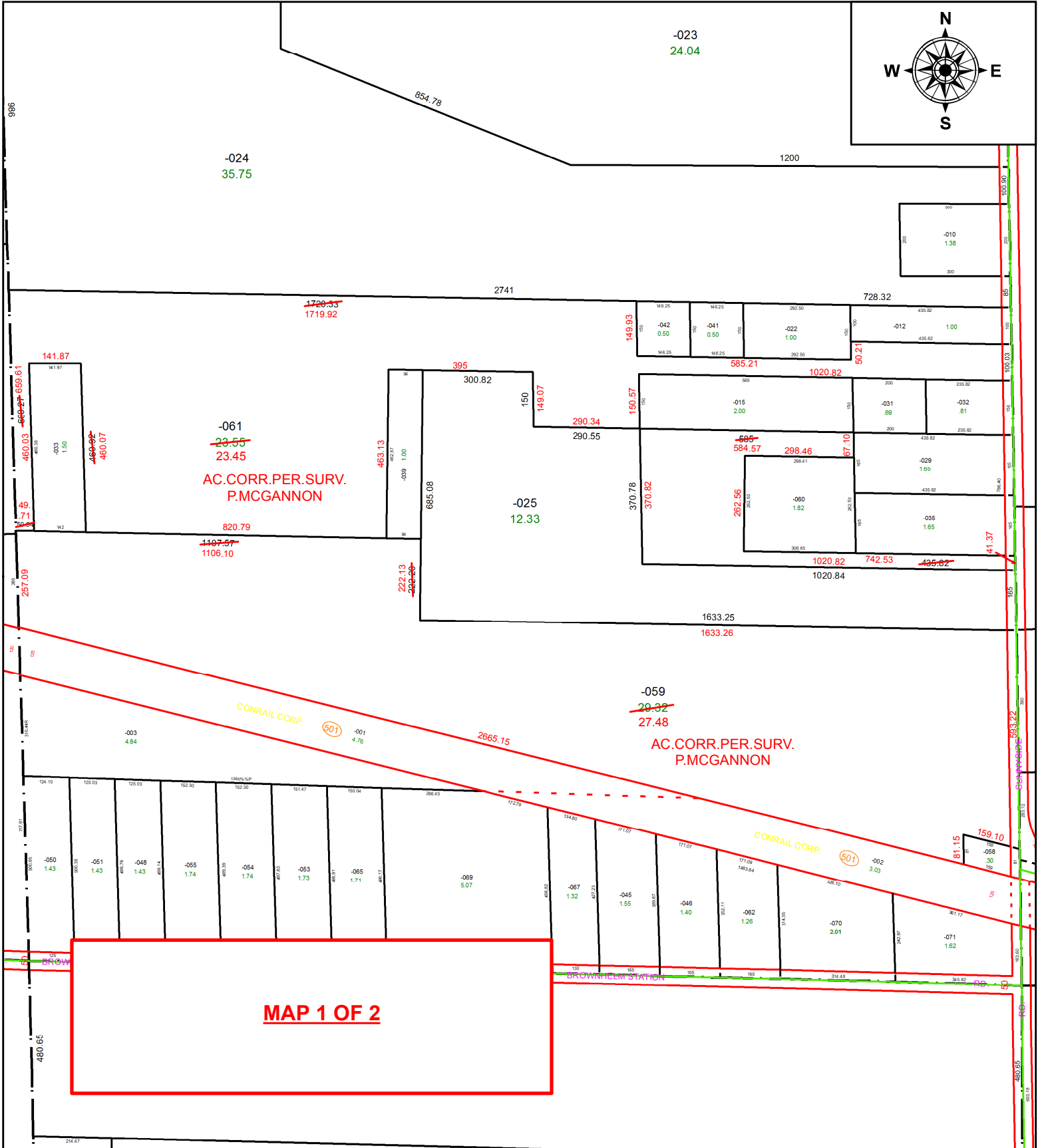


PARENT PARCEL: 01-00-013-000-059, -061

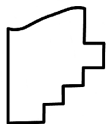
CHILD PARCEL:

20-04331-C

STARTING POINT: INTERSECTION OF C/L OF SUNNYSIDE RD AND C/L OF BROWHELM STATION RD.



MAP 1 OF 2



SPLITS/DEEDS PROCESSED
 LORAIN COUNTY TAX MAP DEPARTMENT
 226 MIDDLE AVE. ELYRIA, OH

SURVEYED BY: PATRICK A. MCGANNON

CLOSURE: 1:326,888

MAP PAGE(S): 1-00-013

APPROVED BY: RRM DATE: 5-14-20

SCALE: 1" = 350 PRIOR INSTRUMENT: DV 1083/807