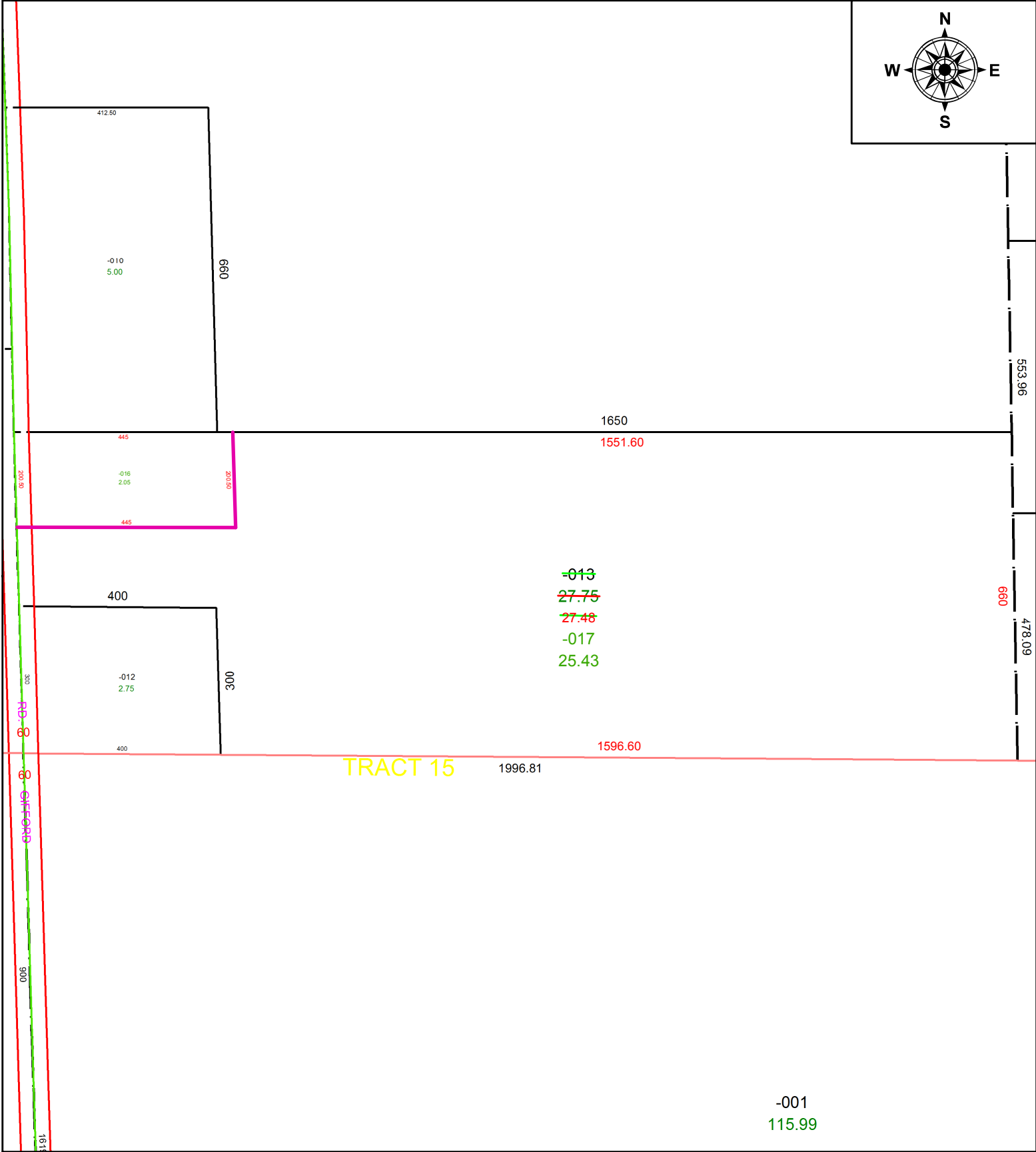
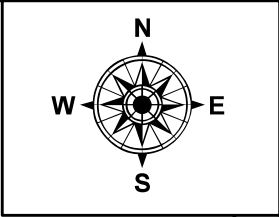


PARENT PARCEL: 08-00-102-000-013 AC CORR PER SURV BY ARNOLD KOEPP

CHILD PARCEL: 08-00-102-000-016, -017

STARTING POINT: C/L OF GIFFORD ROAD AND SW CORNER OF OL 102

21-04329



SPLITS/DEEDS PROCESSED
LORAIN COUNTY TAX MAP DEPARTMENT
226 MIDDLE AVE. ELYRIA, OH

SURVEYED BY: TIMOTHY D. HOZALSKI
CLOSURE: 1: 2147483648
MAP PAGE(S): 08-00-102-D
APPROVED BY: AC DATE: 7/19/2021
SCALE: 1" = 260 PRIOR INSTRUMENT: VOL 1153 PG 960