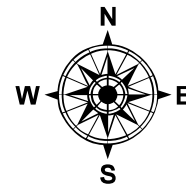


PARENT PARCEL: 06-24-086-102-008

20-04328-C

CHILD PARCEL:

STARTING POINT: INTERSECTION OF SOUTH LINE OF LOWELL ST. AND WEST LINE OF LAWRENCE ST.

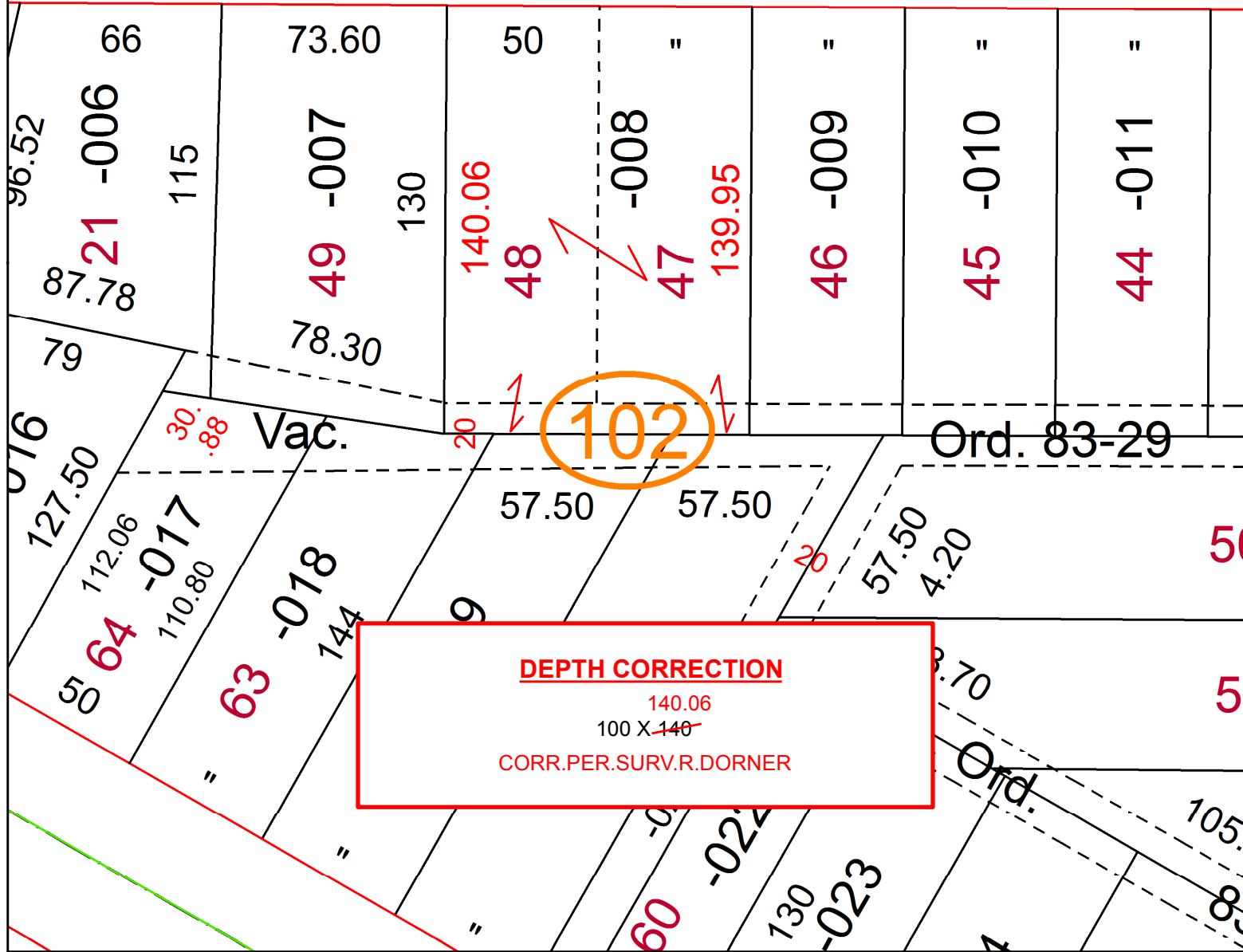


8.17 58.83 218.10

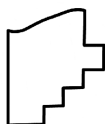
385.50

LOWELL

100



DEPTH CORRECTION
140.06
100 X ~~140~~
CORR.PER.SURV.R.DORNER



SPLITS/DEEDS PROCESSED
LORAIN COUNTY TAX MAP DEPARTMENT
226 MIDDLE AVE. ELYRIA, OH

SURVEYED BY: ROBERT A. DORNER
CLOSURE: 1:314,307
MAP PAGE(S): 6-24-086
APPROVED BY: RRM DATE: 5-14-20
SCALE: 1" = 50 PRIOR INSTRUMENT: 20190730026