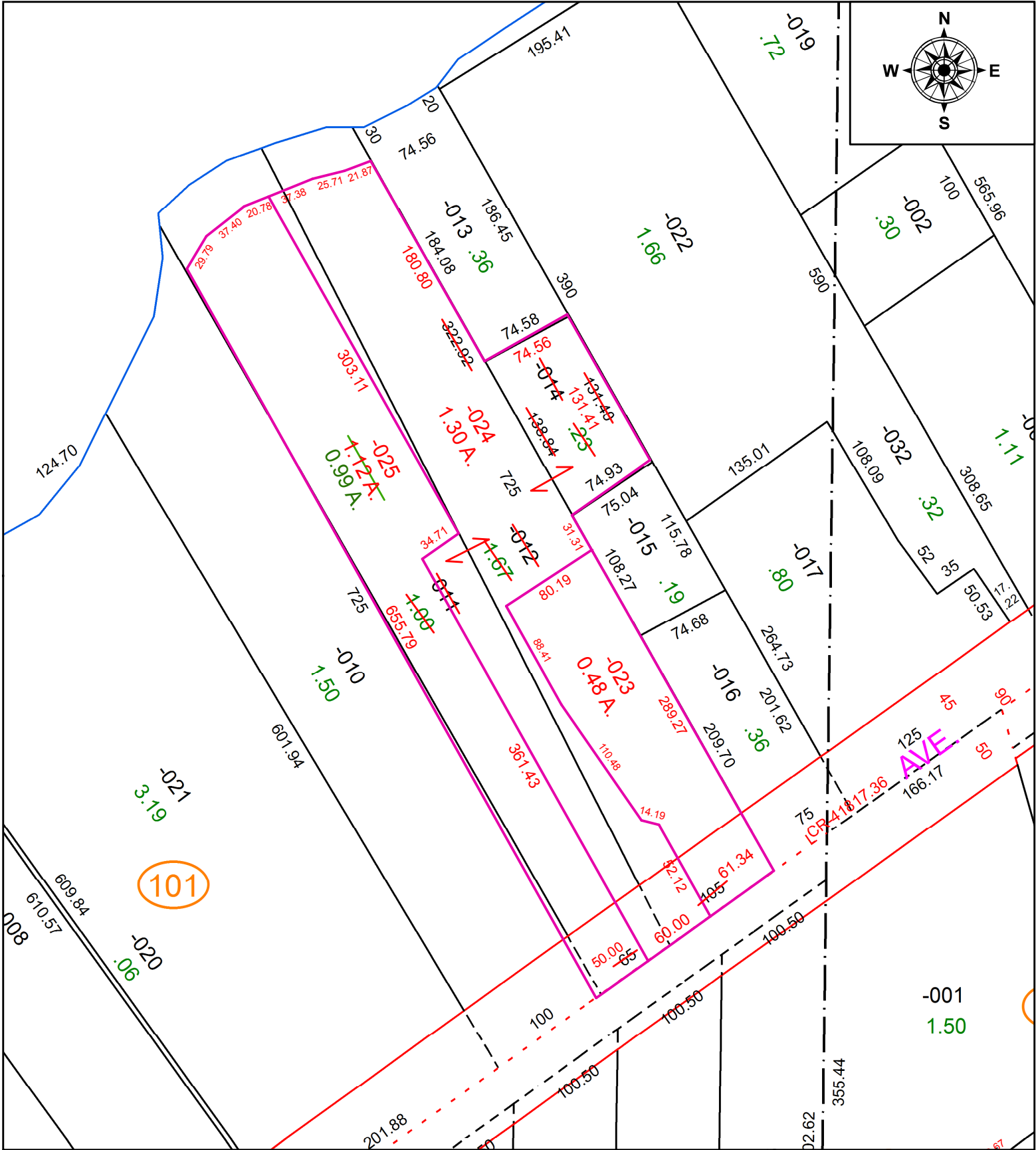


PARENT PARCEL: 02-02-022-101-011, -012, & -014

CHILD PARCEL: 02-02-022-101-023 THRU -025

STARTING POINT: MAG. NAIL SET, CL OF WEST ERIE AVE. & EAST LINE OF O.L. 22

21-04325



SPLITS/DEEDS PROCESSED
 LORAIN COUNTY TAX MAP DEPARTMENT
 226 MIDDLE AVE. ELYRIA, OH

SURVEYED BY: KYLE R. DANALS
 CLOSURE: 1:228424
 MAP PAGE(S): 02-02-022
 APPROVED BY: TJS DATE: 7/14/2021
 SCALE: 1" = 100' PRIOR INSTRUMENT: 2020-0779595