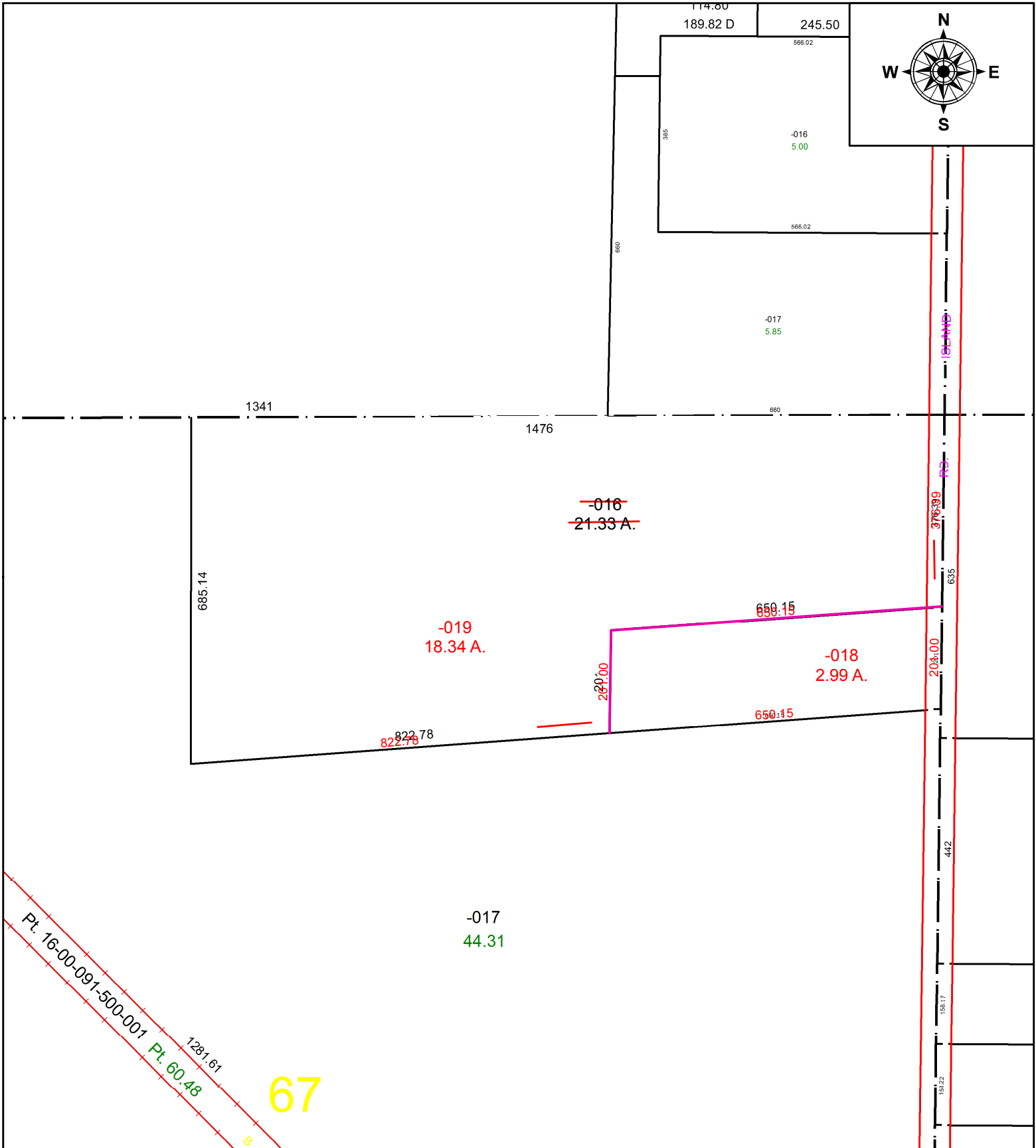


PARENT PARCEL: 16-00-067-000-016

CHILD PARCEL: 16-00-067-000-018 & -019

STARTING POINT: 1/2" I.P. FD, N.E. CORNER OF O.L. 67

21-04324



SPLITS/DEEDS PROCESSED
 LORAIN COUNTY TAX MAP DEPARTMENT
 226 MIDDLE AVE. ELYRIA, OH

SURVEYED BY: NA
 CLOSURE: 1:642187
 MAP PAGE(S): 16-00-067
 APPROVED BY: TJS DATE: 7/6/2021
 SCALE: 1" = 250' PRIOR INSTRUMENT: 2020-0789243