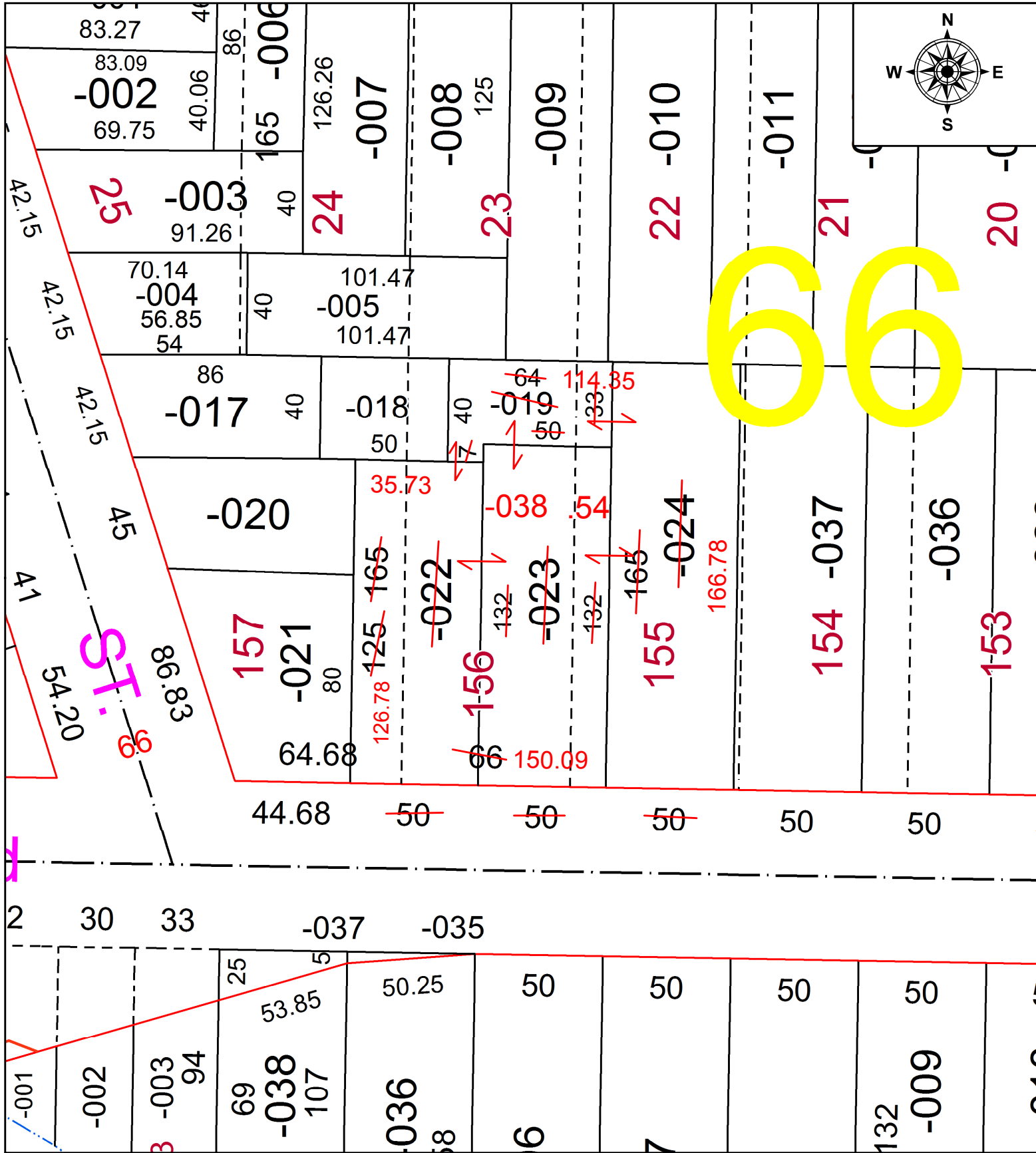


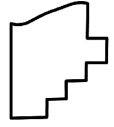
PARENT PARCEL: 06-26-066-000-019, -022, -023 & -024

CHILD PARCEL: XX-XX-XXX-XXX-XXX

STARTING POINT: S.W. CORNER OF SUBLOT 157 IN HEMAN ELY'S PLAT P.V.3 PG. 14

21-04322



 **SPLITS/DEEDS PROCESSED**
 LORAIN COUNTY TAX MAP DEPARTMENT
 226 MIDDLE AVE. ELYRIA, OH

SURVEYED BY: THOMAS SIMON
 CLOSURE: 1: 63,372
 MAP PAGE(S): 06-26-066
 APPROVED BY: DMA DATE: 7/1/2021
 SCALE: 1" = 50 PRIOR INSTRUMENT: 20210810244