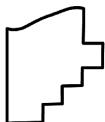
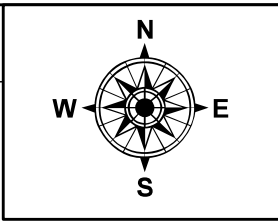
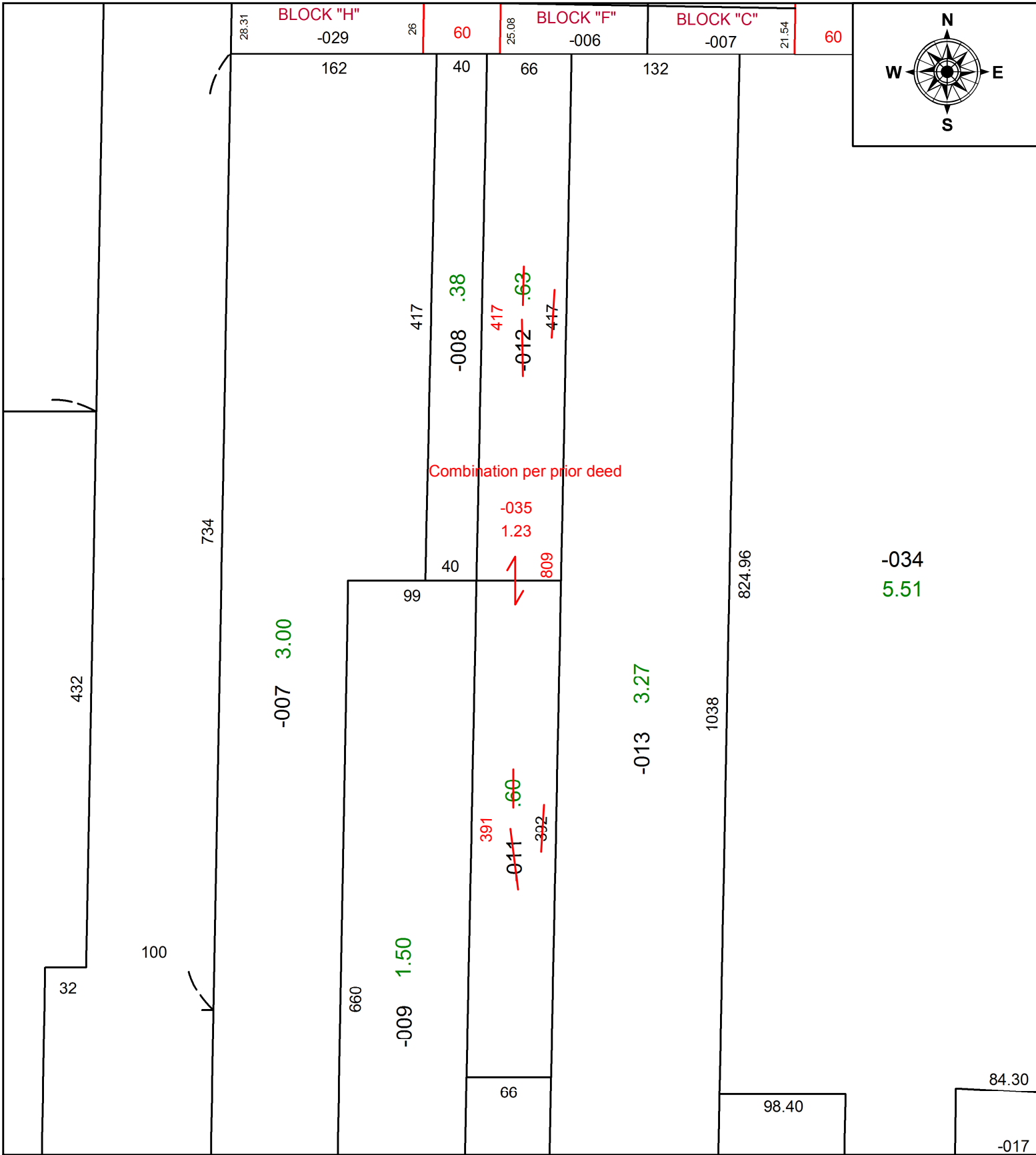


PARENT PARCEL: 09-00-074-102-011 & -012

CHILD PARCEL: 09-00-074-102-035

STARTING POINT: Combination per prior deed

21-04320



SPLITS/DEEDS PROCESSED
 LORAIN COUNTY TAX MAP DEPARTMENT
 226 MIDDLE AVE. ELYRIA, OH

SURVEYED BY: XXXXXXXXXXXXX
 CLOSURE: N/A
 MAP PAGE(S): 09-00-074
 APPROVED BY: DMA DATE: 6/23/21
 SCALE: 1" = 75' PRIOR INSTRUMENT: 20170648202