

PARENT PARCEL: FRONTAGE CORRECTION 02-01-003-130-009 FROM 15 X 140 TO 10 X 140

20-04319-C

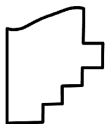
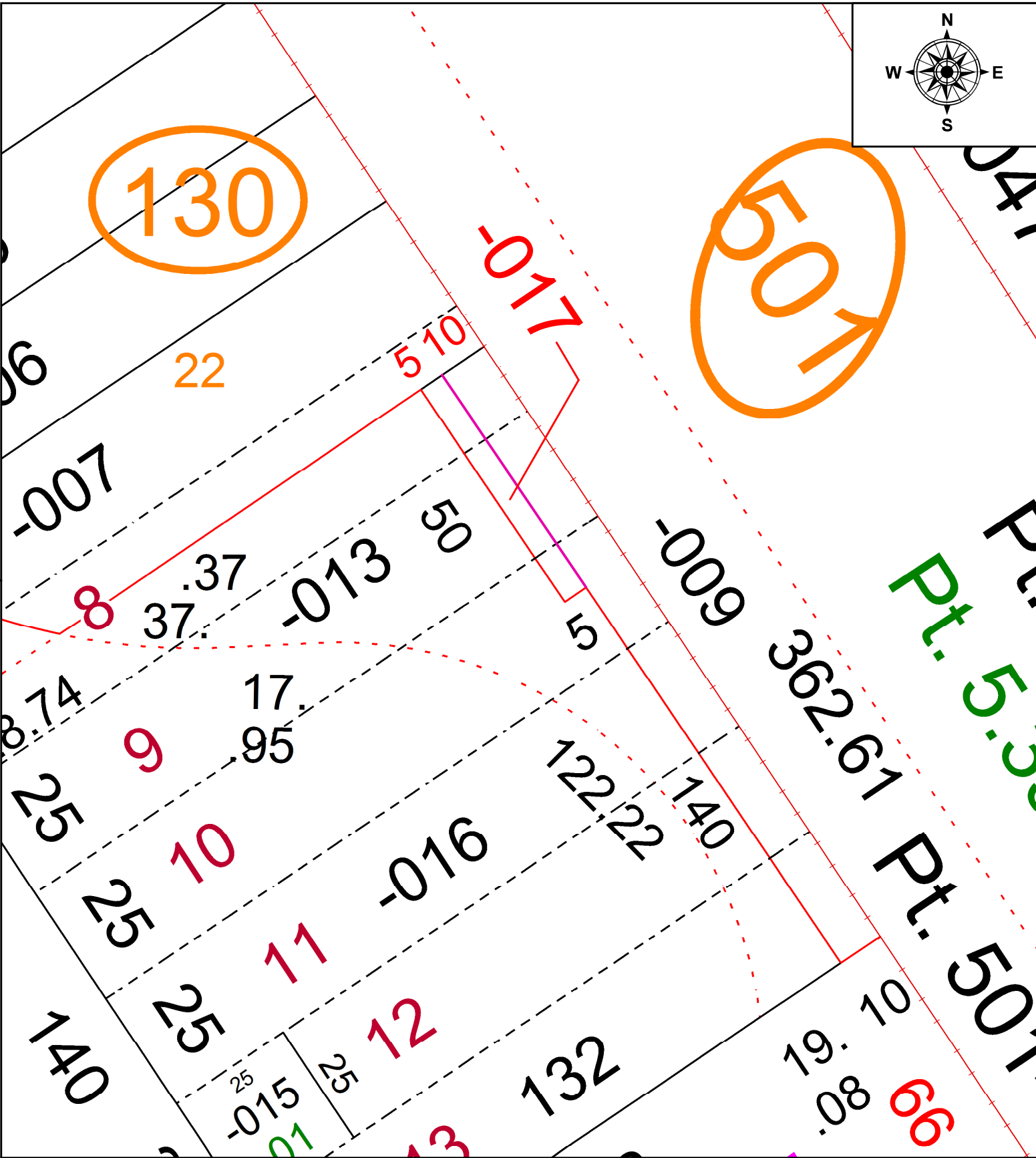
ADD TO DUPLICATE 02-01-003-130-017 5 X 50 PER DV 693/444

STARTING POINT: EAST LINE OF BROADWAY AVE. & NORTH LINE OF 13TH ST.



130

5017



**SPLITS/DEEDS PROCESSED**  
LORAIN COUNTY TAX MAP DEPARTMENT  
226 MIDDLE AVE. ELYRIA, OH

SURVEYED BY: NA  
CLOSURE: 1: INF.  
MAP PAGE(S): 02-01-003  
APPROVED BY: TJS DATE: 4/22/2020  
SCALE: 1" = 25' PRIOR INSTRUMENT: DV 693/444