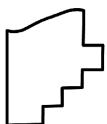
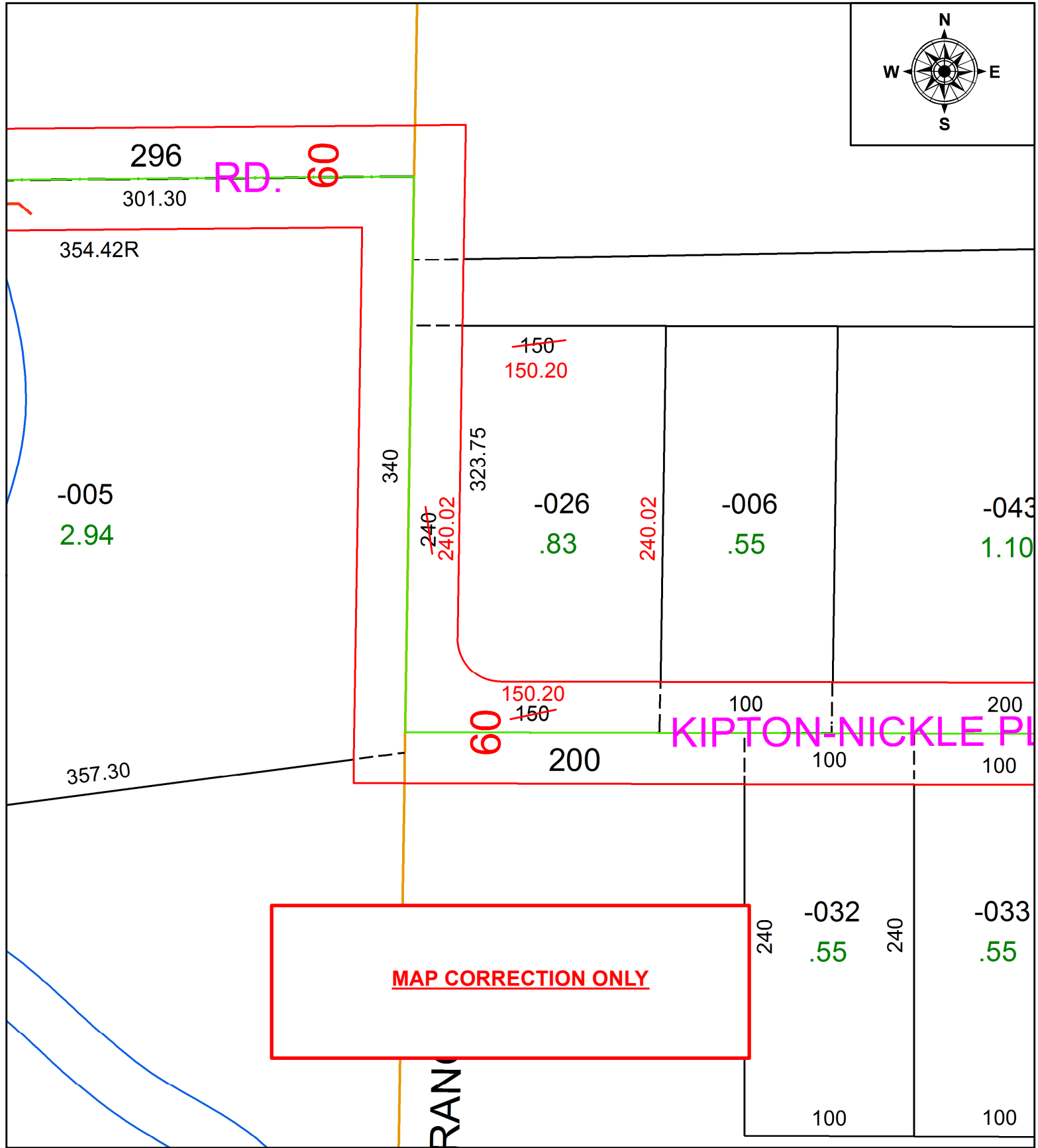
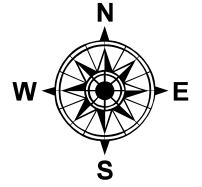


PARENT PARCEL: 15-00-020-000-026

CHILD PARCEL:

STARTING POINT: INTERSECTION OF C/L OF KIPTON NICKLE PLATE RD, AND C/L OF NICKLE PLATE DIAGONAL RD.

20-04318-D



SPLITS/DEEDS PROCESSED
LORAIN COUNTY TAX MAP DEPARTMENT
226 MIDDLE AVE. ELYRIA, OH

SURVEYED BY: BRENT D. ANDERSON

CLOSURE: 1:2147483648

MAP PAGE(S): 15-00-020

APPROVED BY: RRM DATE: 4-22-20

SCALE: 1" = 75' PRIOR INSTRUMENT: 20190713900