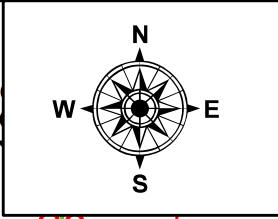


PARENT PARCEL: 13-09-002-000-003, -004

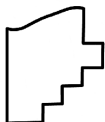
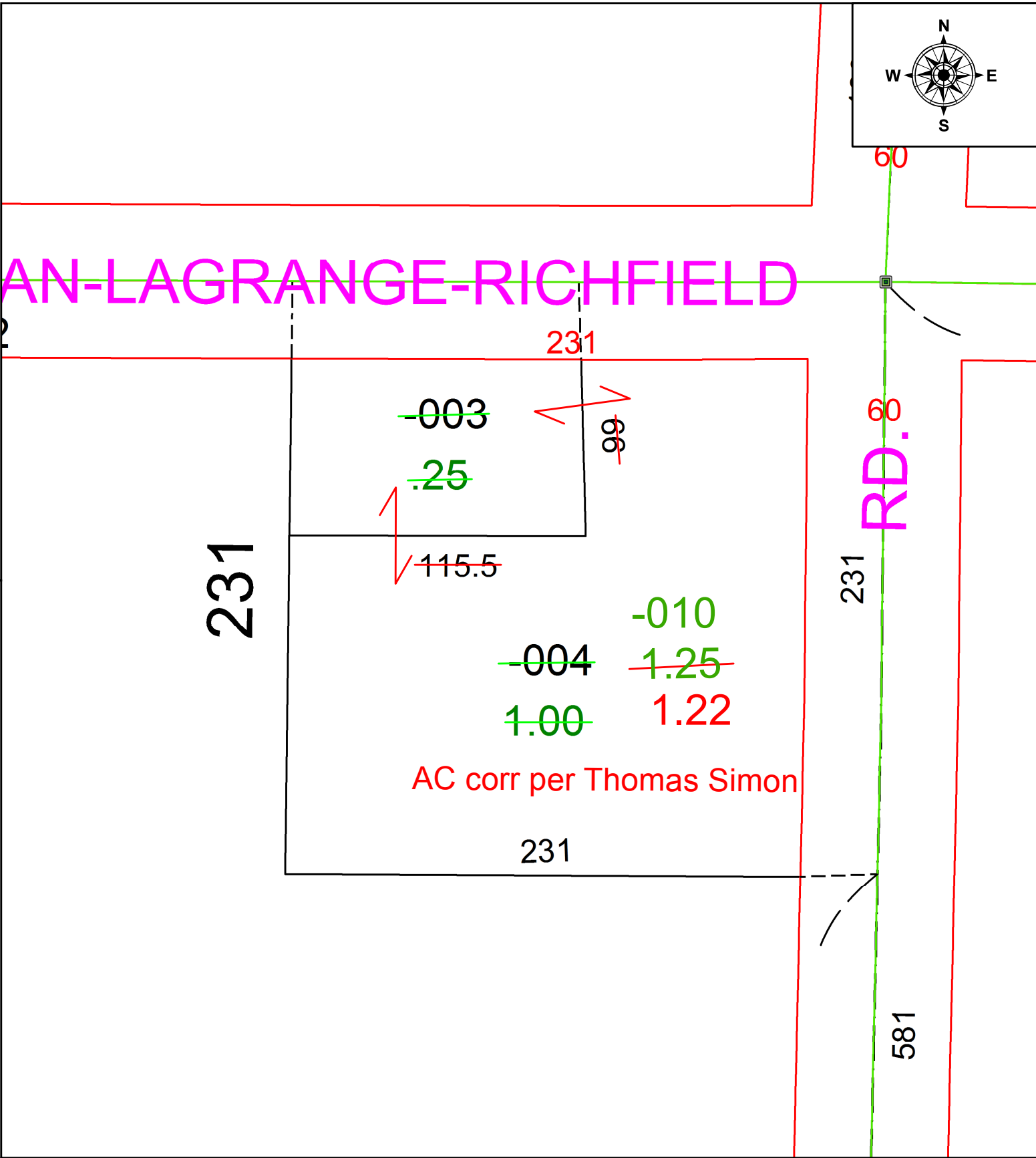
CHILD PARCEL: 13-09-002-000-010

STARTING POINT: MONUMENT BOX AT INTERSECTION OF C/LS OF BAIRD RD & SR 303

21-04317



AN-LAGRANGE-RICHFIELD



SPLITS/DEEDS PROCESSED
 LORAIN COUNTY TAX MAP DEPARTMENT
 226 MIDDLE AVE. ELYRIA, OH

SURVEYED BY: THOMAS SIMON
 CLOSURE: 1: -2147483648
 MAP PAGE(S): 13-09-002
 APPROVED BY: WRZ DATE: 6-16-2021
 SCALE: 1" = 50 PRIOR INSTRUMENT: 2005-0101111