

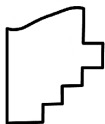
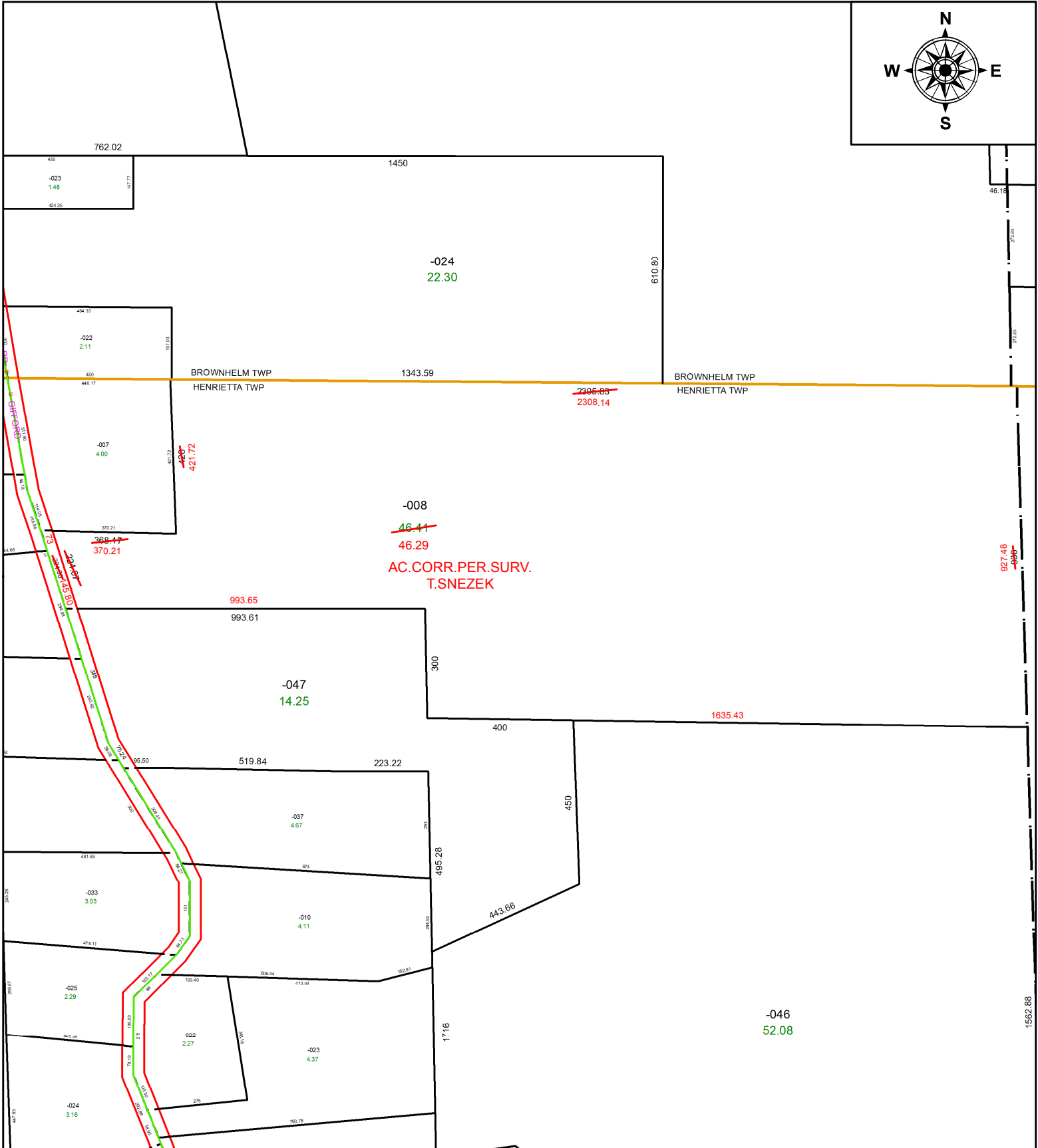
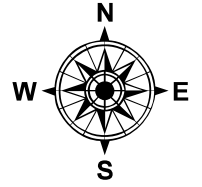
PARENT PARCEL: 08-00-086-000-008

CHILD PARCEL:

STARTING POINT:

INTERSECTION OF C/L OF GIFFORD RD. AND NORTH LINE OF O.L.86

20-04317-D



**SPLITS/DEEDS PROCESSED**  
LORAIN COUNTY TAX MAP DEPARTMENT  
226 MIDDLE AVE. ELYRIA, OH

SURVEYED BY: THOMAS M. SNEZEK

CLOSURE: 1:592,727

MAP PAGE(S): 8-00-086

APPROVED BY: RRM DATE: 4-20-20

SCALE: 1" = 350 PRIOR INSTRUMENT: 20200747315