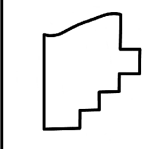
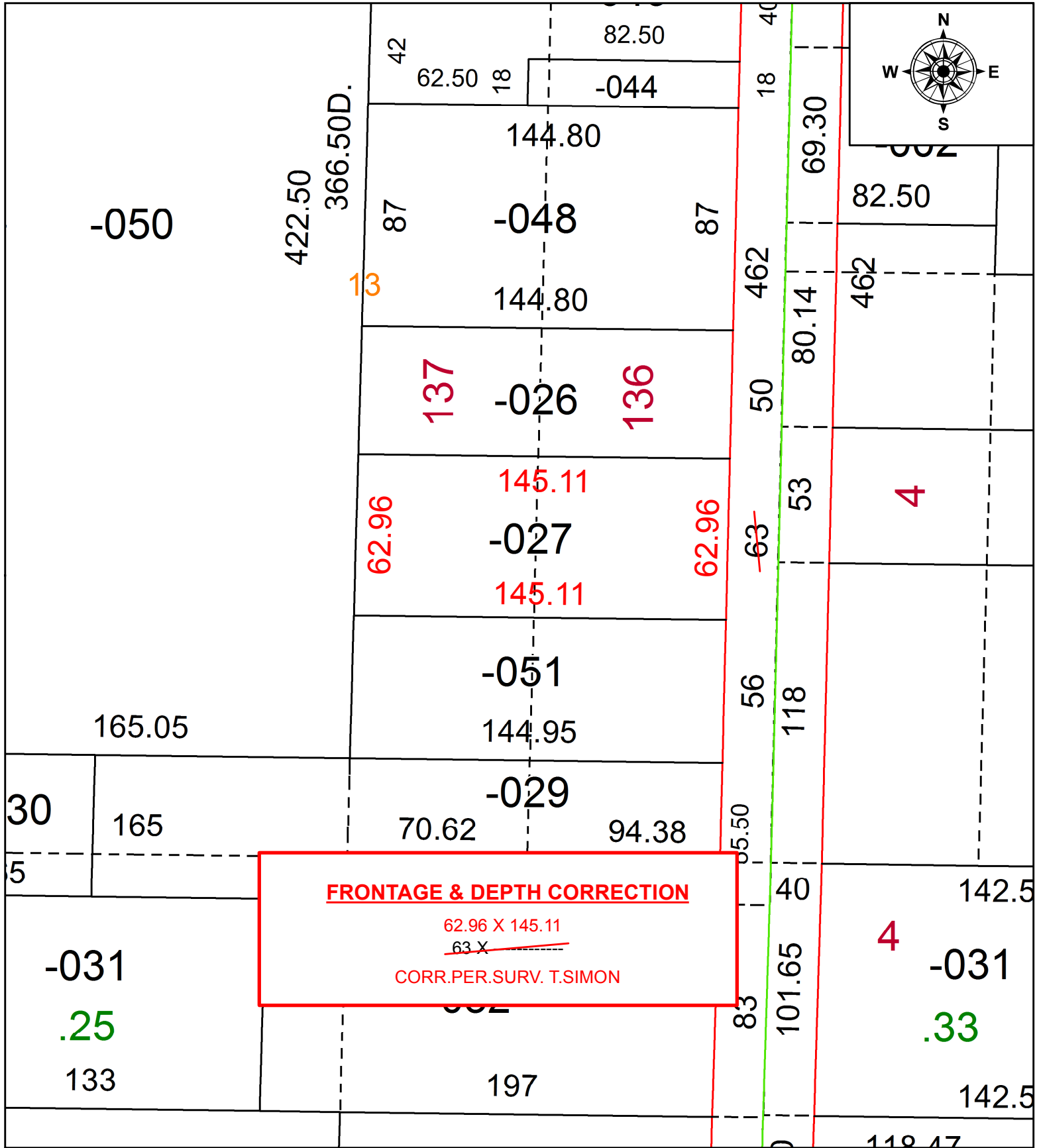


PARENT PARCEL: 09-00-086-105-027

CHILD PARCEL:

STARTING POINT: INTERSECTION OF C/L OF E. LORAIN ST. AND C/L OF N. PARK ST.

20-04314-D



SPLITS/DEEDS PROCESSED
 LORAIN COUNTY TAX MAP DEPARTMENT
 226 MIDDLE AVE. ELYRIA, OH

SURVEYED BY: THOMAS A. SIMON
 CLOSURE: 1:2147483648
 MAP PAGE(S): 9-00-086
 APPROVED BY: RRM DATE: 4-15-20
 SCALE: 1" = 50 PRIOR INSTRUMENT: 20200746659