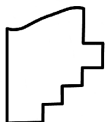
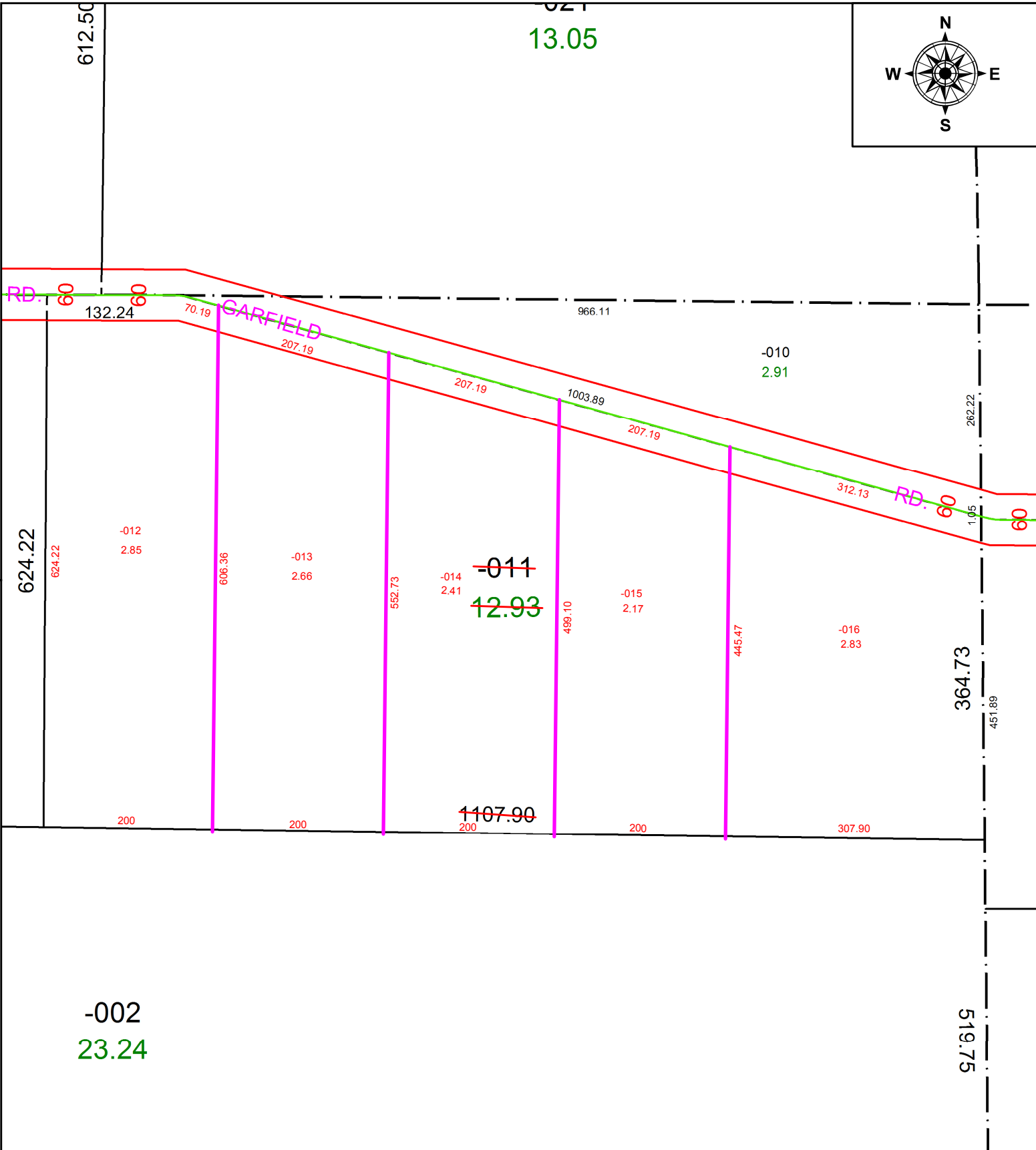


PARENT PARCEL: 08-14-009-000-011

CHILD PARCEL: 08-14-009-000-012 THRU -016

STARTING POINT: INTERSECTION OF C/L GORE ORPHANAGE RD & C/L GARFIELD RD

21-04313



SPLITS/DEEDS PROCESSED
 LORAIN COUNTY TAX MAP DEPARTMENT
 226 MIDDLE AVE. ELYRIA, OH

SURVEYED BY: THOMAS SIMON
 CLOSURE: 1: 163,250
 MAP PAGE(S): 08-14-009
 APPROVED BY: WRZ DATE: 6-4-2021
 SCALE: 1" = 150 PRIOR INSTRUMENT: 2021-0802202