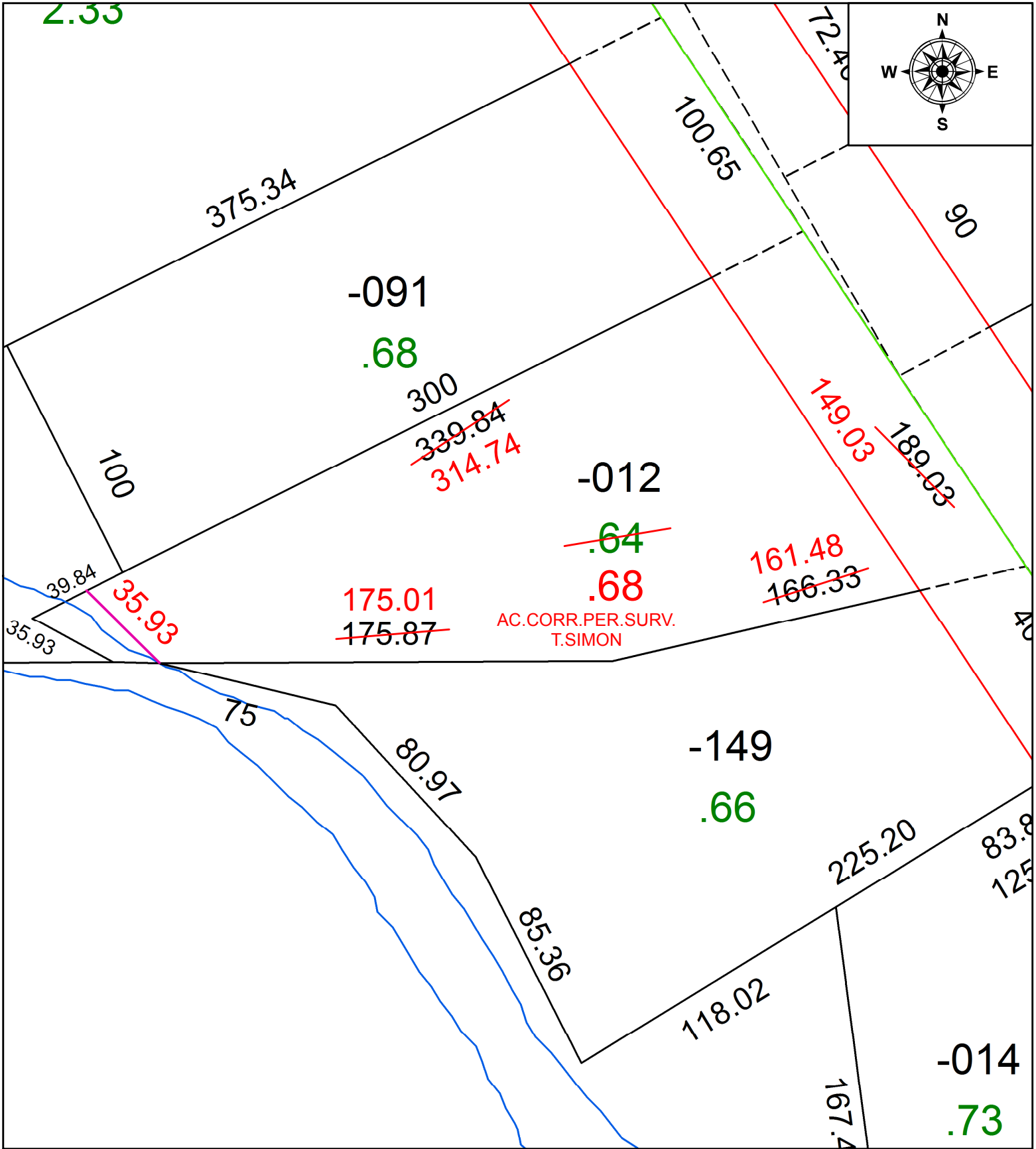


PARENT PARCEL: 04-00-010-113-012

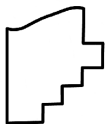
CHILD PARCEL:

STARTING POINT: INTERSECTION OF C/L OF HARVEST AVE. AND C/L OF COLORADO AVE.

20-04313-C



AC. CORR. PER. SURV.
T. SIMON



SPLITS/DEEDS PROCESSED
LORAIN COUNTY TAX MAP DEPARTMENT
226 MIDDLE AVE. ELYRIA, OH

SURVEYED BY:	THOMAS A. SIMON
CLOSURE:	1:254,589
MAP PAGE(S):	4-00-010
APPROVED BY:	RRM DATE: 4-14-20
SCALE:	1" = 50 PRIOR INSTRUMENT: 20110370980