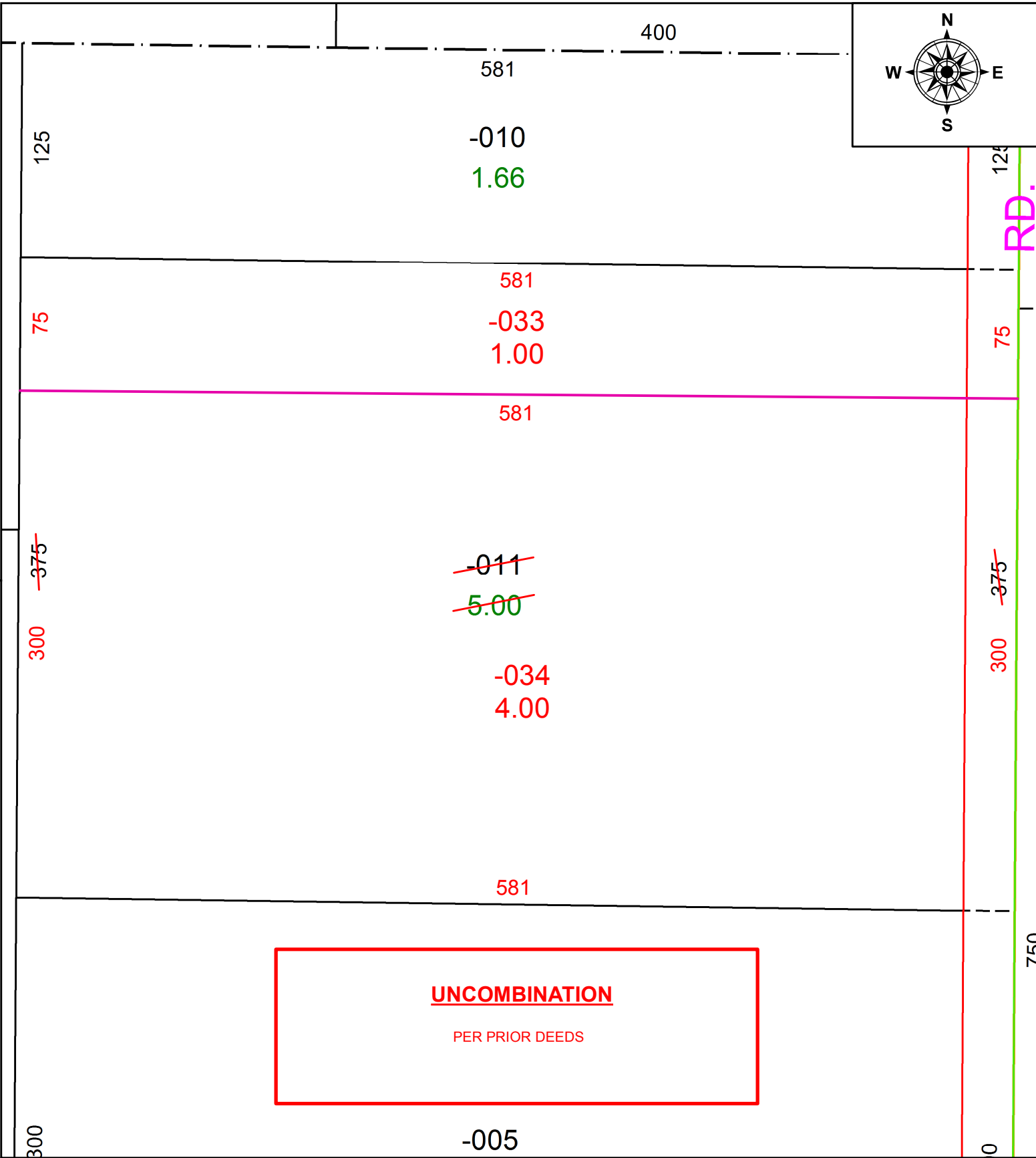
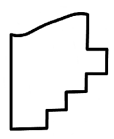


PARENT PARCEL: 17-08-028-000-011
CHILD PARCEL: 17-08-028-000-033, -034
STARTING POINT: INTERSECTION OF C/L OF PECK WADSWORTH RD. AND C/L OF QUARRY RD.

20-04311-U



UNCOMBINATION
PER PRIOR DEEDS



SPLITS/DEEDS PROCESSED
LORAIN COUNTY TAX MAP DEPARTMENT
226 MIDDLE AVE. ELYRIA, OH

SURVEYED BY: NEFF & ASSOC.
CLOSURE: 1:2147483648
MAP PAGE(S): 17-08-028
APPROVED BY: RRM DATE: 4-13-20
SCALE: 1" = 75' PRIOR INSTRUMENT: 20160612964