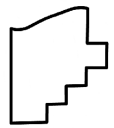
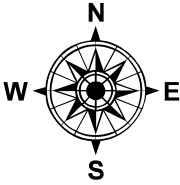
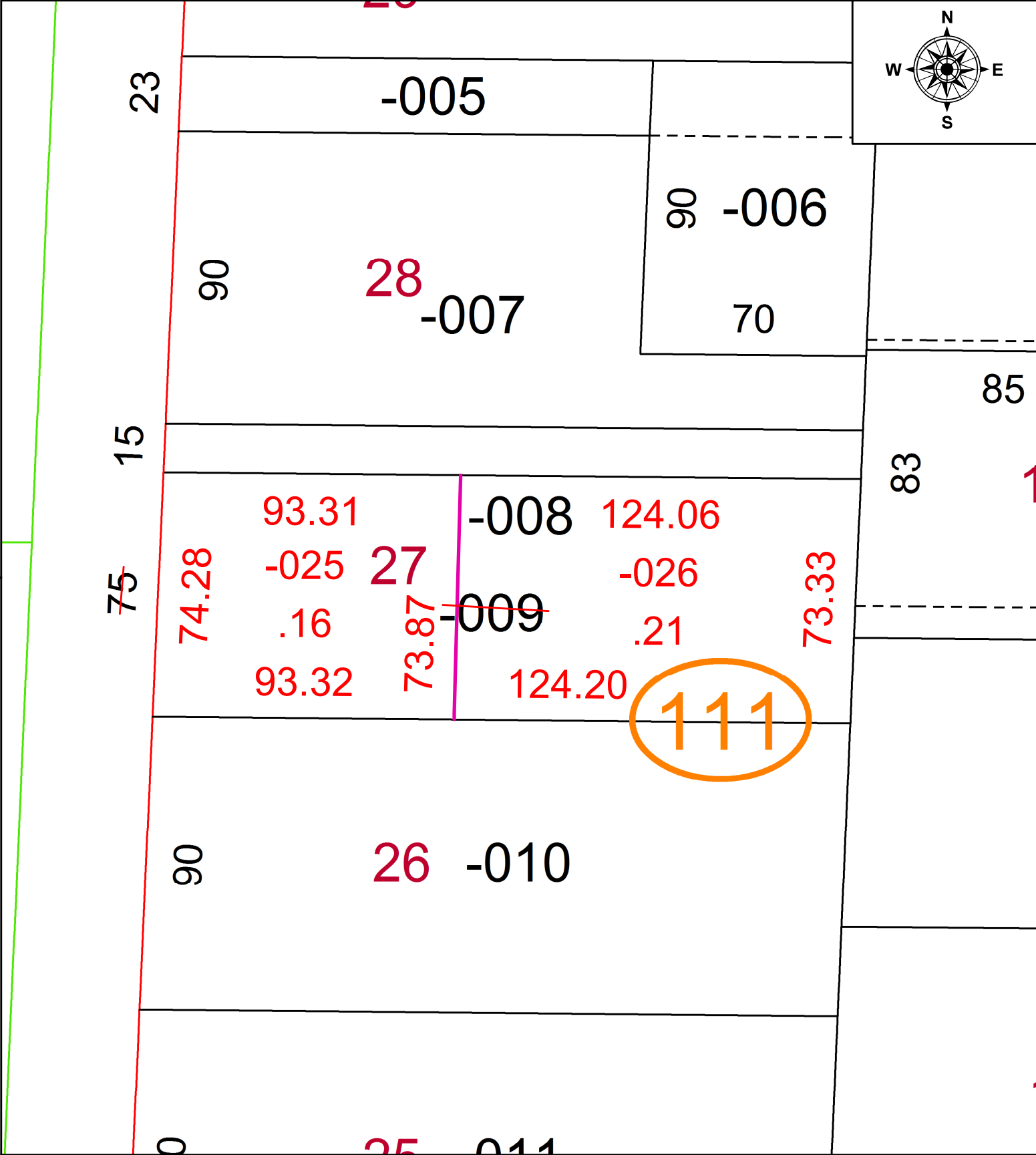


PARENT PARCEL: 05-00-024-111-009

CHILD PARCEL: 05-00-024-111-025, -026

STARTING POINT: NW CORNER OF SUBLot 26, VOLUME 1, PAGE 186

21-04310



SPLITS/DEEDS PROCESSED
 LORAIN COUNTY TAX MAP DEPARTMENT
 226 MIDDLE AVE. ELYRIA, OH

SURVEYED BY: THOMAS A. SIMON
 CLOSURE: 1: 115046
 MAP PAGE(S): 05-00-024-A
 APPROVED BY: AC DATE: 6/3/2021
 SCALE: 1" = 40' PRIOR INSTRUMENT: 1998-0513406