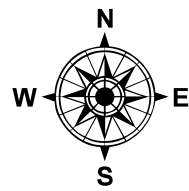
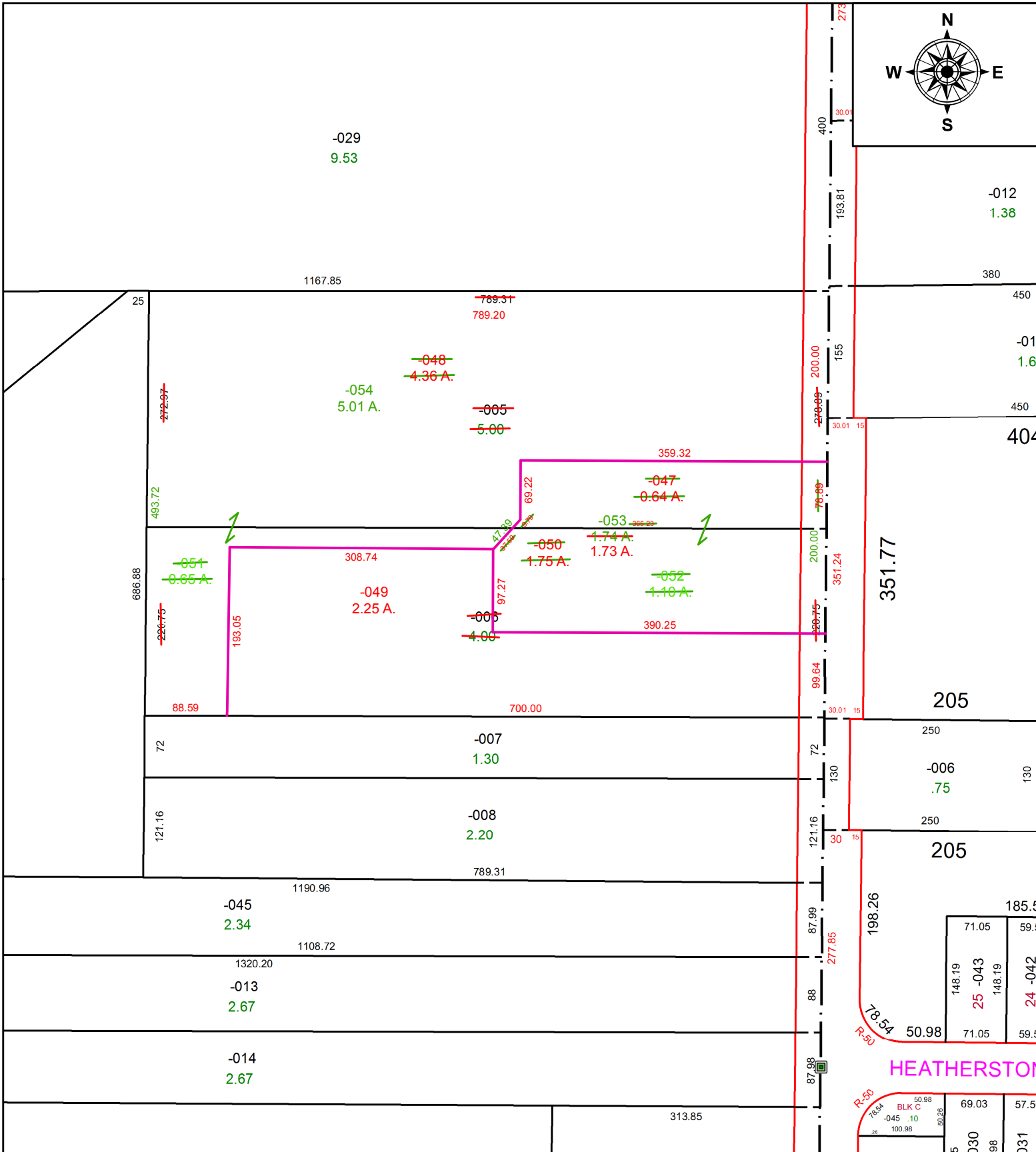


PARENT PARCEL: 12-00-024-000-005 & -006

CHILD PARCEL: 12-00-024-000-047 THRU -054

STARTING POINT: 3/4" I.P. CL OF BOONE RD. POINT BEING NORTH 1913.42' FROM S.W. CORNER OF O.L. 24

21-04309



**SPLITS/DEEDS PROCESSED**  
 LORAIN COUNTY TAX MAP DEPARTMENT  
 226 MIDDLE AVE. ELYRIA, OH

**SURVEYED BY:** GEORGE A. HOFMANN  
**CLOSURE:** 1:275508  
**MAP PAGE(S):** 12-00-024  
**APPROVED BY:** TJS **DATE:** 6/7/2021  
**SCALE:** 1" = 150' **PRIOR INSTRUMENT:** 2020-0760501