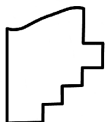
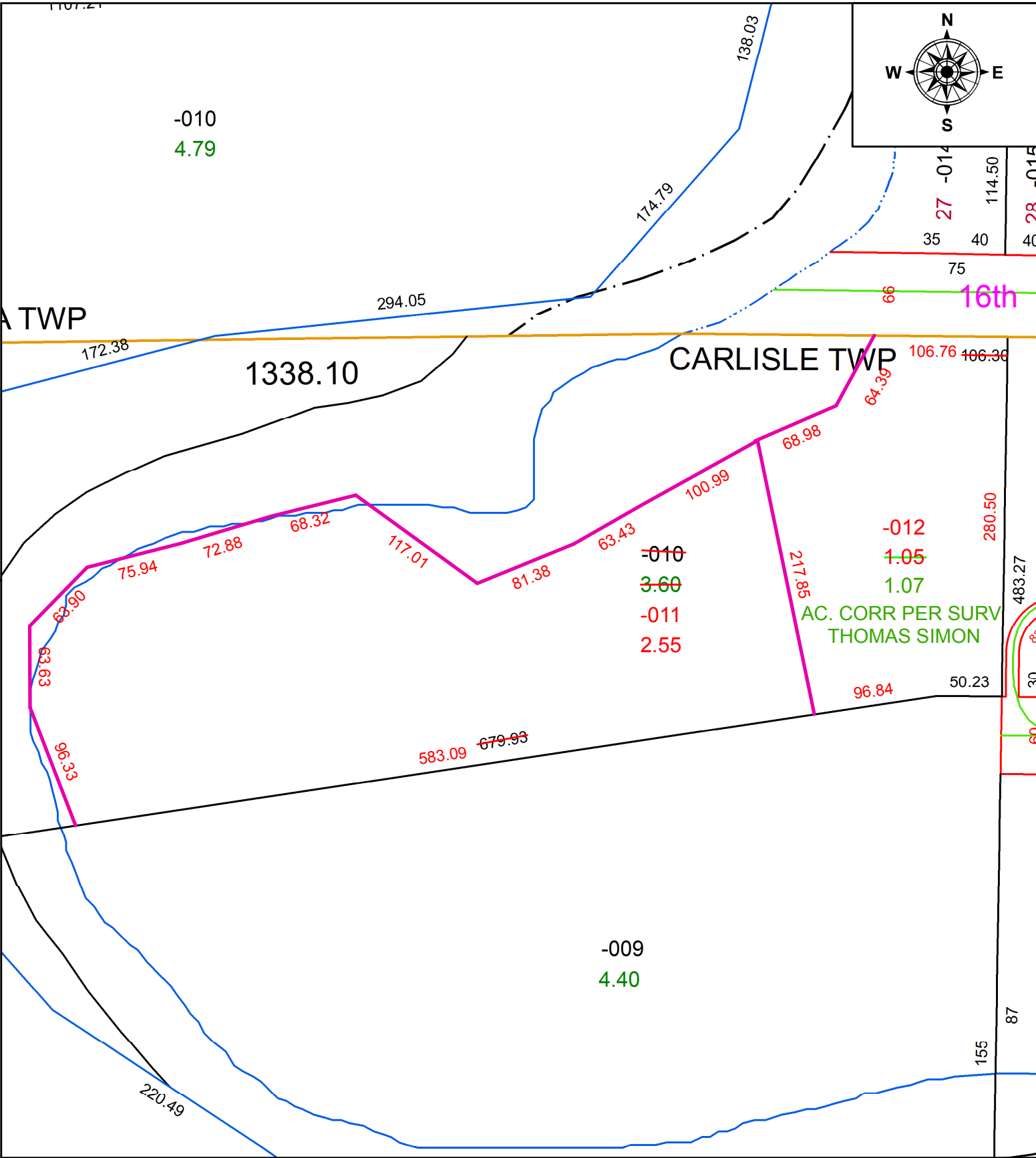


PARENT PARCEL: 10-00-003-114-010

CHILD PARCEL: 10-00-003-114-011, -012

STARTING POINT: NW CORNER OF 17TH STREET

21-04308



SPLITS/DEEDS PROCESSED
 LORAIN COUNTY TAX MAP DEPARTMENT
 226 MIDDLE AVE. ELYRIA, OH

SURVEYED BY: THOMAS A. SIMON
 CLOSURE: 1: 290363
 MAP PAGE(S): 10-00-003-C
 APPROVED BY: AC DATE: 6/1/2021
 SCALE: 1" = 100 PRIOR INSTRUMENT: 1980-0064314