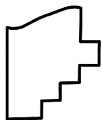
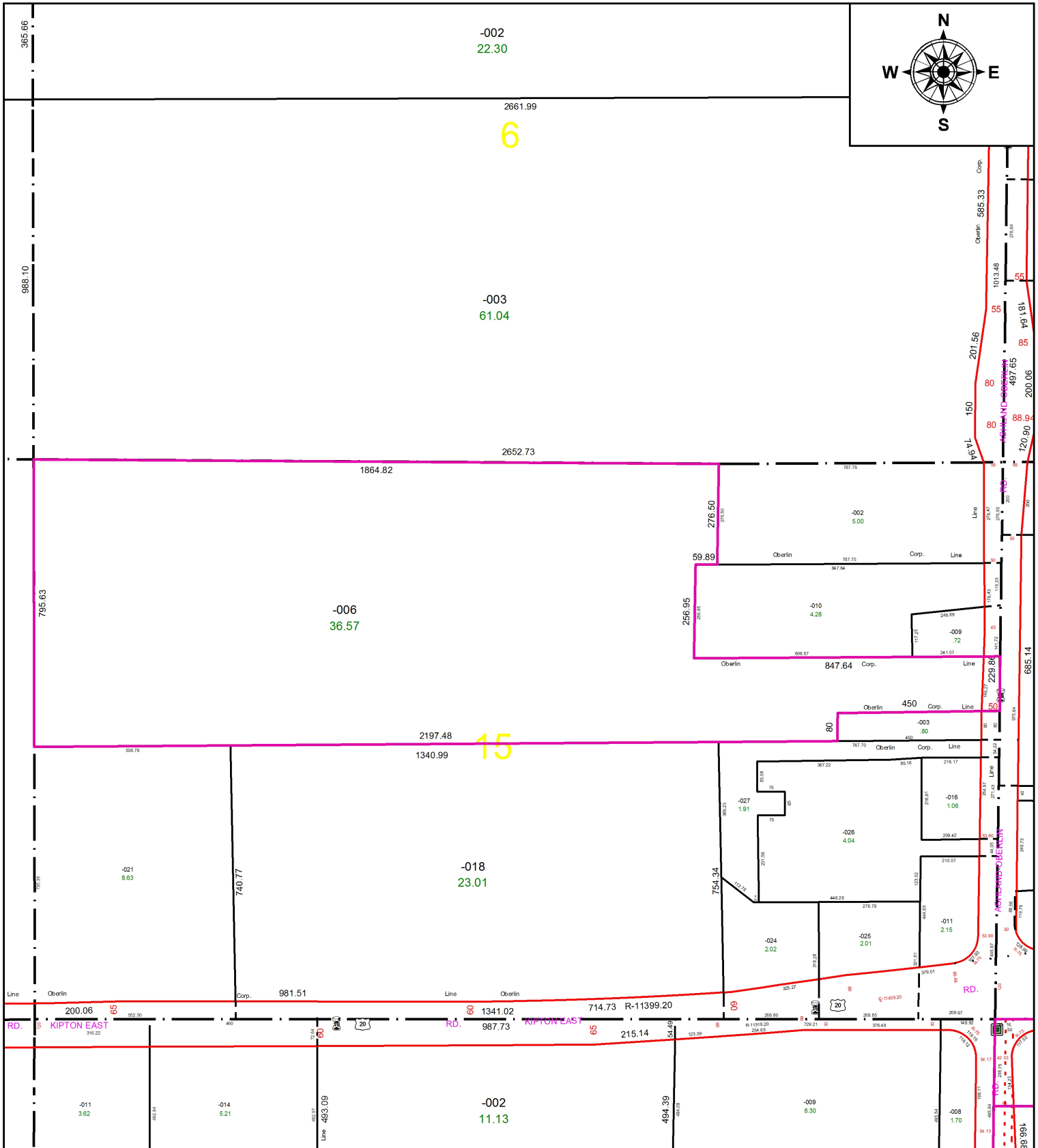
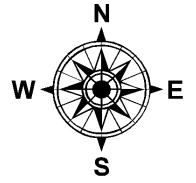


PARENT PARCEL: 14-00-015-000-006

CHILD PARCEL: ANNEXATION RESOLUTION #20-157 3/6/2020 ORD. # 20-27AC CMS

STARTING POINT: N.E. CORNER OF PITTSFIELD TWP. O.L. 15

20-04307-A



SPLITS/DEEDS PROCESSED
LORAIN COUNTY TAX MAP DEPARTMENT
226 MIDDLE AVE. ELYRIA, OH

SURVEYED BY: EDWARD B. DUDLEY III
CLOSURE: 1: 33,000
MAP PAGE(S): 14-00-015
APPROVED BY: TJS DATE: 3/23/2020
SCALE: 1" = 350' PRIOR INSTRUMENT: DV XXXX/XXXX