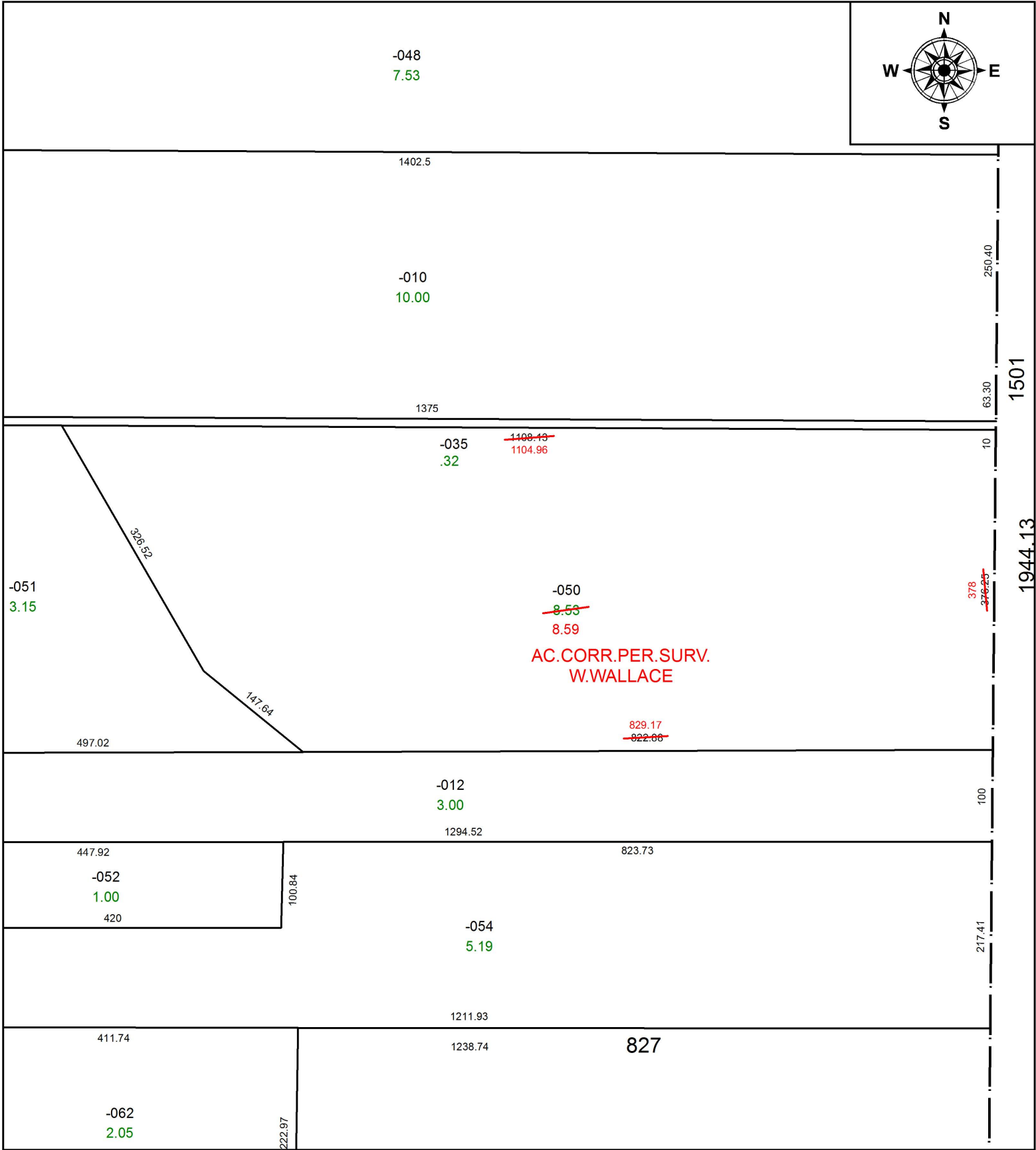
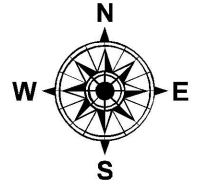


PARENT PARCEL: 12-00-033-000-050

CHILD PARCEL:

STARTING POINT: INTERSECTION OF C/L OF EMMONS RD. AND EAST LINE OF O.L.33

20-04306-D



**SPLITS/DEEDS PROCESSED**  
 LORAIN COUNTY TAX MAP DEPARTMENT  
 226 MIDDLE AVE. ELYRIA, OH

SURVEYED BY: WILLIAM R. WALLACE

CLOSURE: 1:316,671

MAP PAGE(S): 12-00-033

APPROVED BY: RRM DATE: 3-25-20

SCALE: 1" = 150 PRIOR INSTRUMENT: 20200753729